

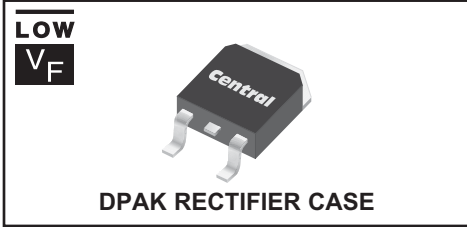
CSHD5-25L
SURFACE MOUNT
LOW V_F
SILICON SCHOTTKY RECTIFIER
5 AMP, 25 VOLTS



www.centrasemi.com

DESCRIPTION:

The CENTRAL SEMICONDUCTOR CSHD5-25L is a Silicon Schottky Rectifier designed for surface mount power applications requiring a low forward voltage drop.



MARKING: FULL PART NUMBER

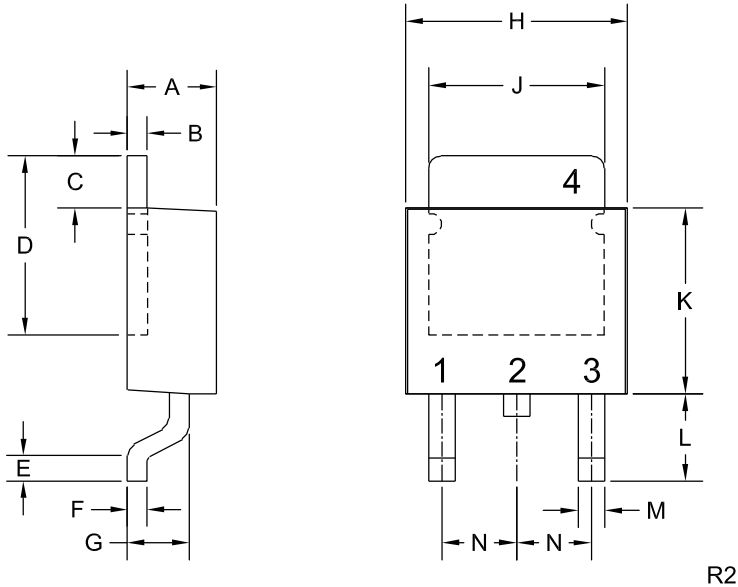
MAXIMUM RATINGS: ($T_C=25^\circ\text{C}$ unless otherwise noted)	SYMBOL		UNITS
Peak Repetitive Reverse Voltage	V_{RRM}	25	V
Average Rectified Forward Current ($T_C=120^\circ\text{C}$)	I_O	5.0	A
Peak Forward Surge Current, $t_p=10\text{ms}$	I_{FSM}	80	A
Peak Repetitive Reverse Surge Current, $t_p=2.0\mu\text{s}$	I_{RRM}	1.0	A
Critical Rate of Rise of Reverse Voltage	dv/dt	10,000	V/ μs
Operating and Storage Junction Temperature	T_J, T_{stg}	-65 to +150	$^\circ\text{C}$
Thermal Resistance	θ_{JC}	2.5	$^\circ\text{C}/\text{W}$

ELECTRICAL CHARACTERISTICS: ($T_C=25^\circ\text{C}$ unless otherwise noted)			
SYMBOL	TEST CONDITIONS	MAX	UNIT
I_R	$V_R=25\text{V}$	500	μA
I_R	$V_R=25\text{V}, T_C=125^\circ\text{C}$	200	mA
V_F	$I_F=5.0\text{A}$	0.47	V
V_F	$I_F=5.0\text{A}, T_C=125^\circ\text{C}$	0.35	V

CSHD5-25L
SURFACE MOUNT
LOW V_F
SILICON SCHOTTKY RECTIFIER
5 AMP, 25 VOLTS



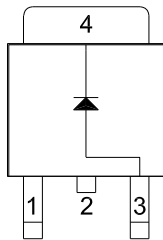
DPAK RECTIFIER CASE - MECHANICAL OUTLINE



LEAD CODE:

- 1) No Connection
 - 2) Cathode
 - 3) Anode
 - 4) Cathode
- Pin 2 is Common to the Tab (4).

MARKING: FULL PART NUMBER



SYMBOL	DIMENSIONS			
	INCHES		MILLIMETERS	
	MIN	MAX	MIN	MAX
A	0.083	0.108	2.10	2.75
B	0.016	0.024	0.40	0.60
C	0.063		1.60	
D	0.203	0.219	5.15	5.55
E	0.039		1.00	
F	0.020		0.50	
G	0.051	0.071	1.30	1.80
H	0.248	0.268	6.30	6.80
J	0.197	0.217	5.00	5.50
K	0.209	0.224	5.30	5.70
L	0.090	0.106	2.30	2.70
M	0.012	0.031	0.30	0.80
N	0.091		2.30	

DPAK RECTIFIER (REV: R2)

R4 (17-February 2010)