

PLEASE CHECK WWW.MOLEX.COM FOR LATEST PART INFORMATION

Part Number: [0495490410](#)
Status: **Active**
Overview: [spox](#)
Description: 2.50mm (.098") Pitch Mini-SPOX™ Housing, 4 Circuits

Documents:

[3D Model](#) [Product Specification PS-49549-002 \(PDF\)](#)
[Drawing \(PDF\)](#) [RoHS Certificate of Compliance \(PDF\)](#)

General

Product Family Crimp Housings
 Series [49549](#)
 Overview [spox](#)
 Product Name SPOX™

Physical

Breakaway No
 Circuits (maximum) 4
 Color - Resin Natural
 Gender Female
 Glow-Wire Compliant No
 Keying to Mating Part None
 Lock to Mating Part Yes
 Material - Resin Polyester
 Number of Rows 1
 Packaging Type Bag
 Panel Mount No
 Pitch - Mating Interface (in) 0.098 In
 Pitch - Mating Interface (mm) 2.50 mm
 Polarized to Mating Part Yes
 Stackable No
 Temperature Range - Operating -40°C to +105°C

Material Info

Reference - Drawing Numbers

Product Specification PS-49549-002
 Sales Drawing SD-49549-001

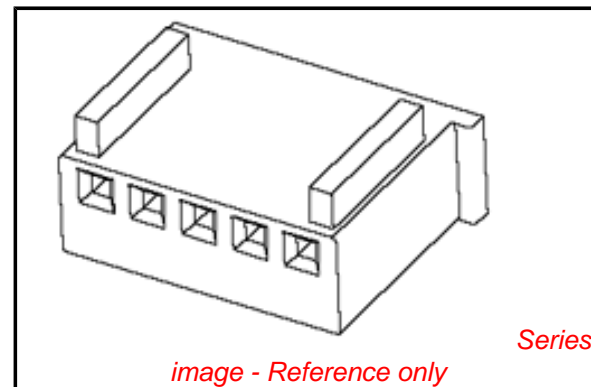


image - Reference only

EU RoHS

**ELV and RoHS
 Compliant**
REACH SVHC
 Not Reviewed
**Halogen-Free
 Status**
 Not Reviewed

China RoHS



**Need more information on product
 environmental compliance?**

Email productcompliance@molex.com
 For a multiple part number RoHS Certificate of
 Compliance, [click here](#)

Please visit the [Contact Us](#) section for any
 non-product compliance questions.

Search Parts in this Series

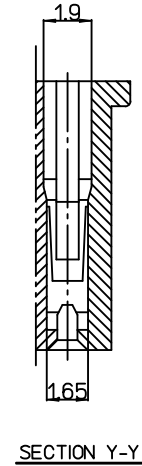
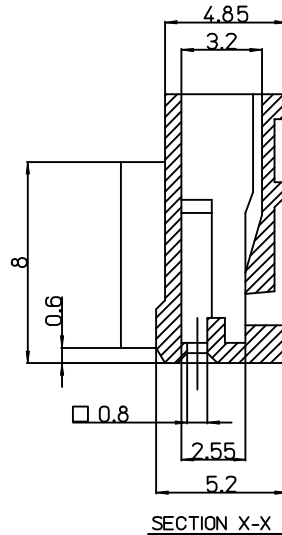
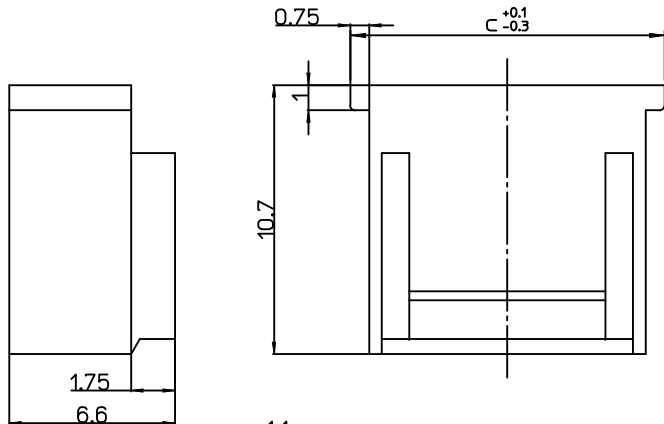
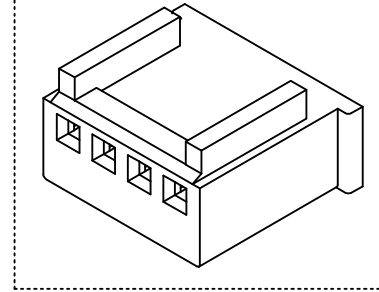
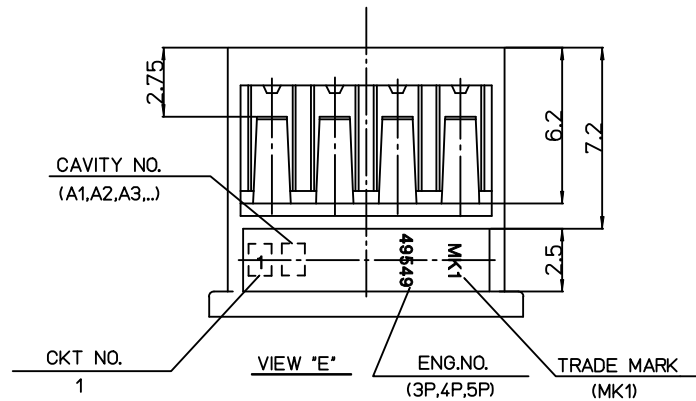
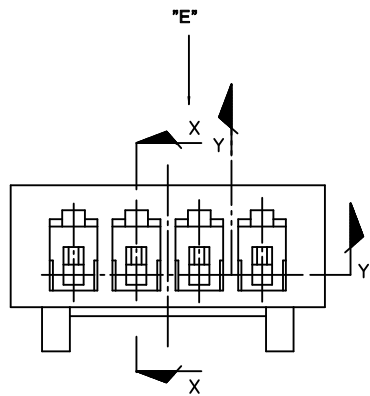
[49549Series](#)

Mates With

[5240](#) Housing, [5045](#) Header

Use With

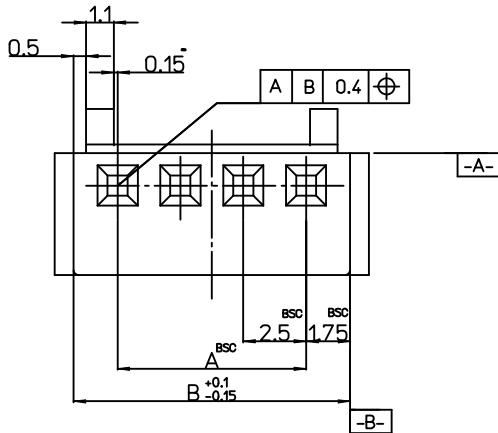
[57915-8001](#) Terminal, [57915-9002](#) Terminal



NOTES.

- MATERIAL : $\text{\textcircled{P}}$ PBT, UNFILLED, UL94V-0
COLOR : NATURAL
- PRODUCT SPECIFICATION : PS-49549-002
- APPLICABLE TERMINAL : 57915-9002/8001
- MATED HOUSING : 5240 SERIES(2P,3P,4P,5P)
HEADER : 5045 SERIES(2P,3P,4P,5P)

DIM.			MATERIAL NO.	ENG NO.	CKT'
C	B	A			
7.5	6.0	2.5	495490210	49549-0210	2
	8.5	5.0	495490310	49549-0310	3
	11.0	7.5	495490410	49549-0410	4
	13.5	10.0	495490510	49549-0510	5



REVISED
EC NO: KOR2009-0162
D
DRAWN: JHPARK01 2009/06/15
CHKD: W. YANG 2009/07/06
APPR: YUNSIKIM 2009/07/07

QUALITY SYMBOLS
▽=0
▽=0

GENERAL TOLERANCES (UNLESS SPECIFIED)

	mm	INCH
4 PLACES	± ---	± ---
3 PLACES	± ---	± ---
2 PLACES	± 0.25	± ---
1 PLACE	± 0.30	± ---

ANGULAR ± 1 °

DRAFT WHERE APPLICABLE
MUST REMAIN
WITHIN DIMENSIONS

DIMENSION STYLE
MM ONLY

DRAWN BY	DATE
JB. JIN	2005/12/21
CHECKED BY	DATE
WY. YANG	2005/12/21
APPROVED BY	DATE
SH. CHOI	2005/12/21

MATERIAL NO.
SEE NOTES

SCALE
5:1

DESIGN UNITS
METRIC

THIRD ANGLE
PROJECTION

TITLE
2.5MM MINI SPOX HSG
(NEW TYPE)

MOLEX INCORPORATED

DOCUMENT NO.
SD-49549-001

SHEET NO.
1 OF 01

THIS DRAWING CONTAINS INFORMATION THAT IS PROPRIETARY TO MOLEX INCORPORATED AND SHOULD NOT BE USED WITHOUT WRITTEN PERMISSION