

**PLEASE CHECK WWW.MOLEX.COM FOR LATEST PART INFORMATION**

**Part Number:** [1120210014](#)  
**Status:** **Active**  
**Description:** BradCommunications™ Direct-Link™ PCU-CANIO CANopen card , PCI-Universal bus, 3.3/5V

**Documents:**

[Drawing \(PDF\)](#) [RoHS Certificate of Compliance \(PDF\)](#)

**General**

Product Family	Network Interface
Series	<a href="#">112086</a>
Approvals	N/A
Communication Speed	1K to 1M bps
Mounting Style	N/A
Product Name	Direct-Link®
Protocol	CANopen* Master
Type	CANopen* Card

**Physical**

Channels	1
Interface	CANopen*
Network Connection Type	D-Sub Female (9 pin)
Packaging Type	Carton
Processor	AMD SD520
Temperature Range - Operating	0°C to +65°C

**Electrical**

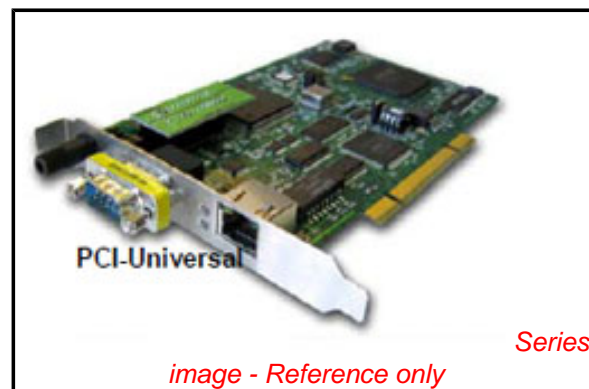
EMC	N/A
Supply Voltage	6W (max. 1.2A)

**Material Info**

Old Part Number	DRL-CNO-PCU
-----------------	-------------

**Reference - Drawing Numbers**

Sales Drawing	E-112021-0014
---------------	---------------



**EU RoHS**

**ELV and RoHS  
Compliant**  
**REACH SVHC  
Not Reviewed**  
**Halogen-Free  
Status**

**China RoHS**



**Need more information on product  
environmental compliance?**

Email [productcompliance@molex.com](mailto:productcompliance@molex.com)  
 For a multiple part number RoHS Certificate of  
 Compliance, [click here](#)

Please visit the [Contact Us](#) section for any  
 non-product compliance questions.

**Search Parts in this Series**  
[112086Series](#)



BradCommunications™ Direct-Link™ CANopen network interface cards allow deterministic I/O data acquisition for PC-based control applications.

## Direct-Link™ CANopen

Data acquisition for real time

### Features

- Automatic devices detection on the network
- Connect PC-Based Control applications directly to I/O devices
- Protocol: CANopen Master/Scanner
- 1 Serial or Ethernet port for remote configuration and diagnostic
- Embedded Communication on the card for powerful data throughput
- Automatic I/O mapping for easy configuration

### OS supported

#### Standard package

- Windows 32-bit (XP SP1/ 2000 SP4 / NT SP6, 2003 Server), Ardence RTX

#### Free Download

- Windows XP Embedded, QNX, VxWorks, Linux, Phar Lap ETS, DOS

CANopen



RoHS



PCI-Universal



PC/104

### Overview

BradCommunications™ Direct-Link™ is a low range of automation components for industrial communication. It includes a variety of products such as diagnostic tools, intelligent connectors, tunneling gateways, fieldbuses network interface cards, and software drivers for industrial networks.

Simple as they are affordable, BradCommunications™ Direct-Link™ products allow you to acquire the equipment to develop your architectures and industrial applications at a lower cost.

Direct-Link™ products are characterized by their simple use and fast implementation; they are modular and scalable. Moreover, they are designed to be easily embedded into computerized systems and are available in a wide selection of form factors.

### Powerful Network Interface card

Particularly, the **BradCommunications™ Direct-Link™ CANopen** interface cards are equipped with 1 CANopen port handling CANopen protocol in **Master mode** up to 1Mbps.

A smart A.D.M (Automatic Dual port ram Mapping) mechanism avoids the I/O tags configuration in the Dual Port RAM of the card. More than a simple I/O acquisition card, the Direct-Link™ PCU-CANIO/PC104-CANIO interfaces provide the applications with additional information such as: *device status and diagnostics, process data read/write monitoring, communication tools for troubleshooting, hardware and software Watchdog, etc..*

The communication layers are completely embedded on the cards, allowing easy and fast communication with field devices resulting in remarkable application performance.

Product package includes:

- Graphical console for configuration and diagnostic tools
- Data servers (Multi-protocol OPC DA 3.0 & 2.05, ActiveX, DAServer, FastDDE/SuiteLink)
- I/O libraries for Windows (DLL) and Ardence's hard real time extensions (RTX)
- Static library for non-windows OS
- Drivers for soft-logic packages ▲

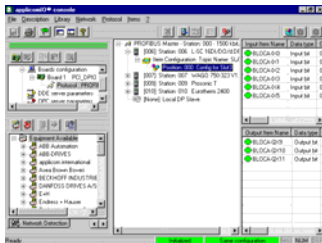
**BradCommunications™**

## Direct-Link™ CANopen

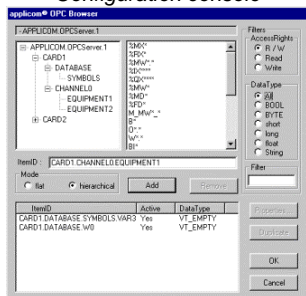


### Software tools

Direct-Link™ Interface cards provide effective software tools enabling fast integration of industrial communication into your applications. The console is common to all fieldbuses of Woodhead offer as Profibus-DP, EtherNet/IP, Modbus/TCP and DeviceNet.



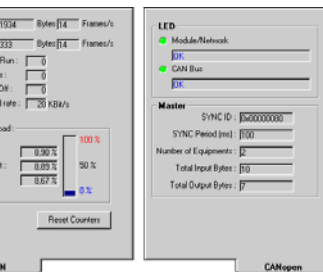
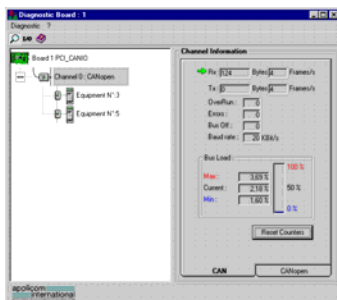
- Configuration console -



- OPC Browser -



- ActiveX implementation -



- Diagnostic and test tools -

### Hardware specifications

	PCU-CANIO	PC104-CANIO
<b>Bus interface</b>	PCI Universal 3.3/5V, PCI-X compatible	PC/104 bus
<b>Processor</b>	AMD SC520	
<b>Memory</b>	8 Mbytes SDRAM	
<b>Interrupt</b>	Hardware Plug&Play	2, 3, 4, 5, 6, 7, 10, 11, 12, 14, 15
<b>DPRAM Address</b>	Hardware Plug&Play (8 Kbytes used per card)	From C8000 to DE000 (8 Kbytes used per card)
<b>Dimensions (L x W)</b>	168mm x 107mm (6.61" x 4.21")	95mm x 90mm (3.74" x 3.54")
<b>Consumption</b>	6W (max. 1.2A)	5W (max. 0.8A)
<b>Operating Temperature</b>	0°C (32°F) up to +65° C (149°F)	0°C (32°F) up to +65° C (149°F)
<b>Storage Temperature</b>	-40°C (-40°F) up to +80°C (176°F)	-40°C (-40° F) up to +85°C (185° F)
<b>Discrete Input</b>	Opto-coupled discrete input Voltage -> DC +10 to +30 or AC 24 V (50 to 60 Hz)	
<b>Discrete Output</b>	"WatchDog" output contact free from potential (floating) (24V DC, 0.25 A)	
<b>EMC Compliance</b>	EN55022 Class B, EN61000-6-2, EN61000-3-2, EN61000-3-3	
<b>RoHS Compliance</b>	Yes	

### 1 CANopen port

<b>Connector type</b>	CANopen Standard, 9-pin Sub-D male (gender changer Sub-D Male/ Male supplied)	HE13 (2 x 5 pins)
<b>CAN Controller</b>	Phillips SJA 1000	
<b>CAN Transceiver</b>	Phillips 82C251	
<b>Speed</b>	1, 10, 20, 50, 100, 125, 250, 500, 800, 1000 Kbps	
<b>LED indicators</b>	1 Status LED / 1 transmission LED	

### Port for remote configuration and diagnostic

<b>Port Type</b>	Ethernet port	Asynchronous Serial port
<b>Connector type</b>	BaseT - RJ45	HE13 (2 x 5 pins)
<b>LED indicators</b>	4 LEDs - TX/RX/Link/100 Mbps	-
<b>Electrical interface</b>	Ethernet IEEE 802.3	RS232
<b>Speed</b>	10/100 Mbps (auto-negotiation)	50 to 38400 bps

### Protocol Specifications

CANopen	Specifications
	<ul style="list-style-type: none"> <li>Specifications CIA DS 301 v4.0, DS302 v4.02</li> <li>Supported profiles: DSP 401, DSP 402, DSP 403, DSP 404, DSP 406</li> <li>Connect up to 127 Slave stations</li> <li>Send/Rec of PDO's (3500) and TPDO/RPDO (256/256)</li> <li>PDO modes: Event driven, Sync Cyclic, Sync Acyclic, Async</li> <li>Dynamic PDO mapping</li> <li>Integrated data consistency</li> <li>Direct access to variable types (bit, byte, word, double word)</li> <li>EDS Library</li> </ul>

### Ordering Information

Part Number	Product Description
<b>DRL-CNO-PCU</b>	BradCommunications™ Direct-Link™ PCU-CANIO CANopen card , PCI-Universal bus, 3.3/5V
<b>DRL-CNO-104</b>	BradCommunications™ Direct-Link™ PC104-CANIO CANopen card, PC/104 bus

To contact us: [www.woodhead.com](http://www.woodhead.com)

Reference Number: DW200590 Date Published: October 2007

**BradCommunications™**

**North America:** US: + 1 800 225 7724 – Canada: +1 519 725 5136

**Europe:** France: +33 2 32 96 04 20 – Germany: +49 7252 94 96 0 – Italy: +39 010 59 30 77 – United: Kingdom +44 1495 356300

**Asia:** Shanghai, China: +86 21-5835-9885 - Tianjin, China: +86 22-23321717

Singapore: +65 6268-6868 – Yamato, Japan: +81 46-265-2428 – Nagoya, Japan: +81 52-221-5950

BradCommunications and Direct-Link are trademarks of Woodhead Industries.  
© 2007 Woodhead Industries, a division of Molex Incorporated.