

Monolithic crystal filter

MQF21.4-1800/08



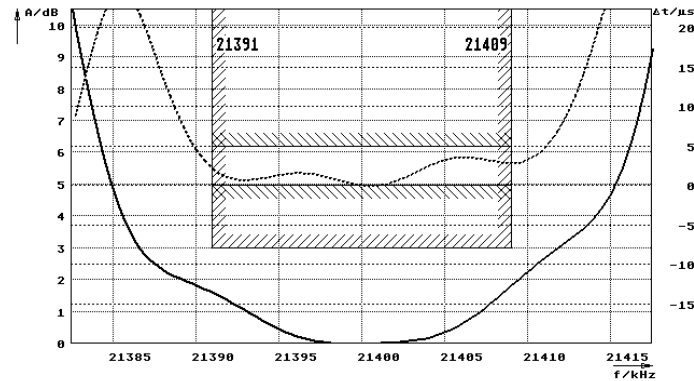
Application

- 6 pol filter
- i.f.- filter
- use in mobile and stationary transceivers

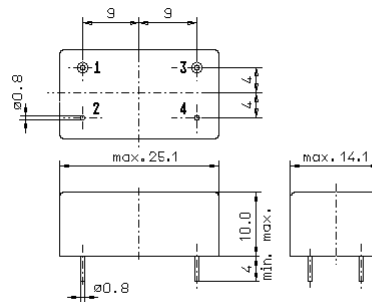
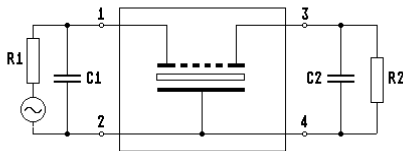
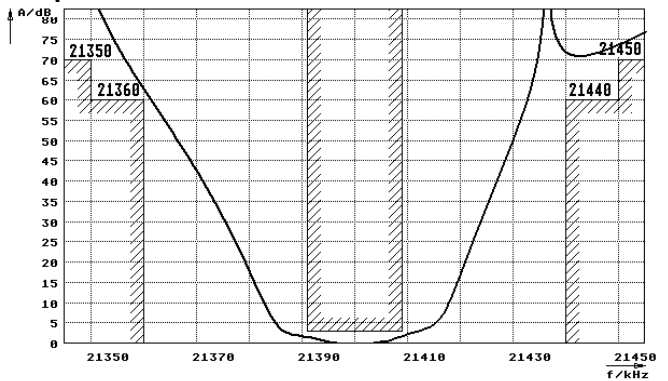
Limiting values		Unit	Value
Nominal frequency	f_0	MHz	21.4
Insertion loss		dB	< 4.0
Pass band at 3.0dB		kHz	$\pm > 9$
Ripple in pass band	$f_0 \pm 9$ kHz	dB	Gaussian
Stop band attenuation	$f_0 \pm 40$ kHz	dB	> 60
	$f_0 \pm 50$ kHz	dB	> 70
Alternate attenuation		dB	> 70
Spurious responses		dB	> 40
Group delay (absolute)		μ s	< 60
Group delay distortion	$f_0 \pm 9$ kHz	μ s	< 5
Terminating impedance Z			
R1 C1		Ohm/pF	50 0
R2 C2		Ohm/pF	50 0
Operating temp. range		$^{\circ}$ C	-20... +70
Storage temp. range		$^{\circ}$ C	-45... +85
Environment conditions			according to CF001

Characteristics MQF21.4-1800/08

Pass band



Stop band



GM3

- Pin connections:
- 1 Input
 - 2 Ground-Input
 - 3 Output
 - 4 Ground-Output