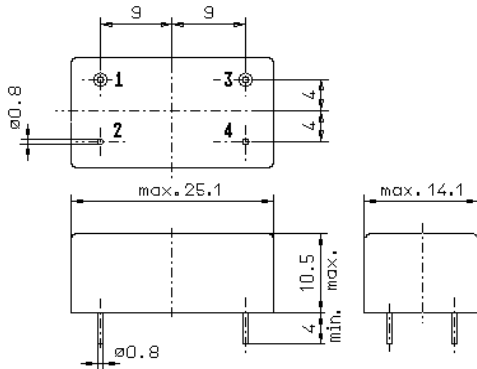


Specification for crystal filter:

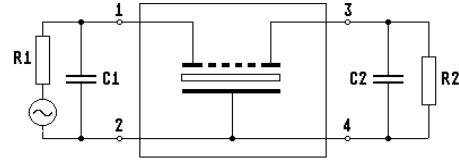
**QF 172.955-3500/07V1**

## 1. General

### 1.1. Package:



GM3.1



- |                                   |                      |
|-----------------------------------|----------------------|
| 1.2. Type name:                   | QF 172.955-3500/07V1 |
| 1.3. Number of poles:             | 4                    |
| 1.4. Operating temperature range: | -20°C to +70°C       |
| 1.5. Operable temperature range:  | -40°C to +85°C       |

## 2. Electric values

- |   |   |
|---|---|
| 2.1. Nominal centre frequency fo:                 | 172.955 MHz                                     |
| 2.2. <b>Pass band</b>                             |   |
| 2.2.1. Bandwidth between 3 dB - frequencies:      | ≥ fo ± 20 kHz                                   |
| 2.2.2. Ripple:                                    | ≤ 2.0 dB at fo ± 17.5 kHz                       |
| 2.2.3. Group delay distortion:                    | ≤ 25 μs at fo ± 20 kHz                          |
| 2.2.4. Insertion loss:                            | ≤ 7 dB  |
| ( measured on smallest attenuation in pass band ) |   |
| 2.3. <b>Stop band</b>                             |   |
| 2.3.1. fo ± 80 kHz                                | ≥ 40 dB   |
| 2.3.2. fo ± 455 kHz                               | ≥ 55 dB   |
| 2.3.3. Alternate attenuation:                     | ≥ 55 dB   |
| 2.3.4. Spurious responses:                        | <b>≥ 20 dB</b>                                  |
| 2.4. Terminating impedance ( input and output ):  | 50 Ω // 0 pF                                    |
| 2.5. Nominal drive level:                         | < 0 dBm   |
| 2.6. Maximum allowed drive level:                 | 15 dBm  |
| 2.7. Intermodulation                              |   |
| frequency 1:                                      | 173.055   |
| frequency 2:                                      | 173.155   |
| input power:                                      | 0 dBm   |
| IM:   | > 58 dB   |
| 3. Marking on the package:                        | manufacturer, date code<br>QF 172.955-3500/07V1 |
| 4. Environment conditions:                        | Corresponding to Telefilter CF001               |

Edited by: \_\_\_\_\_ date: \_\_\_\_\_

Name: \_\_\_\_\_