

PLEASE CHECK WWW.MOLEX.COM FOR LATEST PART INFORMATION

Part Number: [0350729712](#)
Status: **Active**
Description: MP-Lock™ Quick Disconnect, Female, for 18-22 AWG (0.80-0.33mm²), Metal Strip, Tab 6.35 by 1.00mm (.250 by .039"), Pre-Tin Plated

Documents:

[Drawing \(PDF\)](#) [RoHS Certificate of Compliance \(PDF\)](#)

General

Product Family	Quick Disconnects
Series	35072
Crimp Quality Equipment	Yes
Product Name	MP-Lock™
Type	Quick Disconnect

Physical

Barrel Type	Open
Gender	Female
Glow-Wire Compliant	No
Insulation	None
Lock to Mating Part	Yes
Material - Metal	Brass
Material - Plating Mating	Tin
Material - Plating Termination	Tin
Orientation	Straight
Packaging Type	Reel
Plating min: Mating (µin)	32.00
Plating min: Mating (µm)	0.800
Plating min: Termination (µin)	32.00
Plating min: Termination (µm)	0.80
Polarized to Mating Part	Yes
Tab Thickness	1.00mm (.039")
Tab Width	6.35mm (.250")
Temperature Range - Operating	-40°C to +105°C
Termination Interface: Style	Crimp or Compression
Wire Insulation Diameter	1.50-3.20mm (.060-.125") max.
Wire Size AWG	18, 20, 22
Wire Size mm ²	0.33 - 0.80

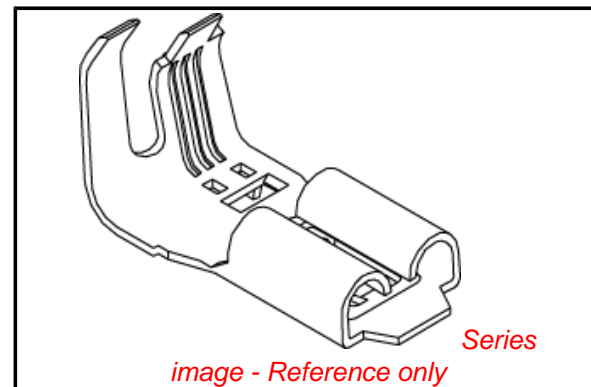
Electrical

Voltage - Maximum	300V
-------------------	------

Material Info

Reference - Drawing Numbers

Sales Drawing	SD-35072-9702
---------------	---------------



EU RoHS

ELV and RoHS Compliant
REACH SVHC Contains SVHC: No
Halogen-Free Status
Halogen-Free

China RoHS



Need more information on product environmental compliance?

Email productcompliance@molex.com
 For a multiple part number RoHS Certificate of Compliance, [click here](#)

Please visit the [Contact Us](#) section for any non-product compliance questions.

Search Parts in this Series

[35072Series](#)

Use With

[35196](#) , [35959](#)

Application Tooling | FAQ

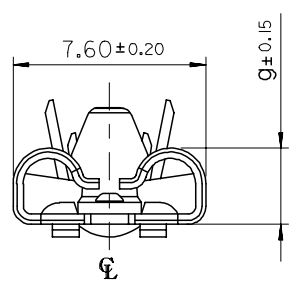
Tooling specifications and manuals are found by selecting the products below. Crimp Height Specifications are then contained in the Application Tooling Specification document.

Global

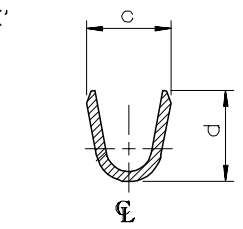
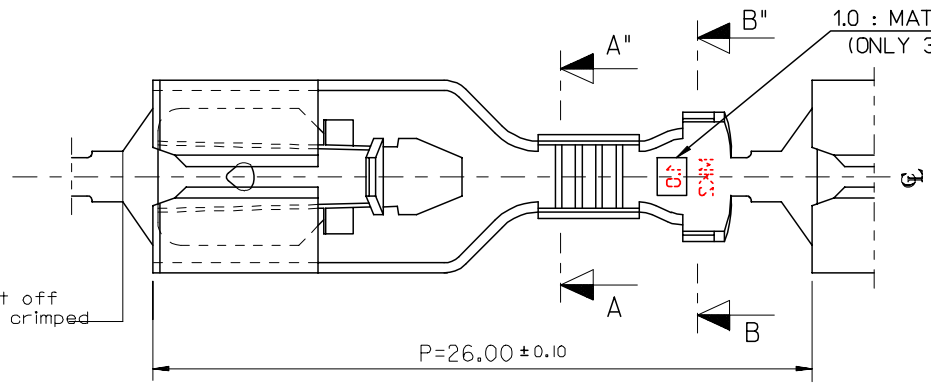
Description	Product #
Hand Crimp Tool for .250 MP-Lock Crimp Terminals	0638196300

DWG. NO. SD-35072-9702
 PROJECT NO.
 SIMILAR ITEM
 DO NOT SCALE DRAWING DIMENSION IN METRIC

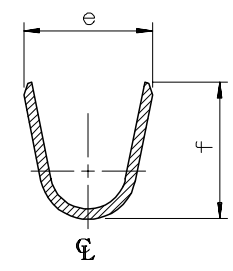
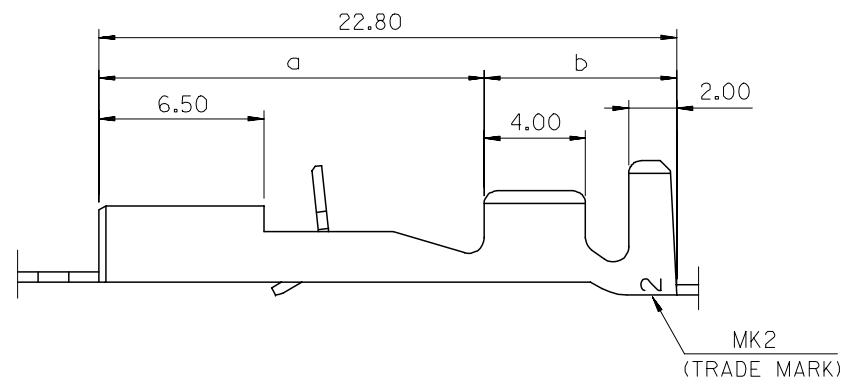
8 7 6 5 4 3 2 1



This part is cut off when wires are crimped



SECTION: A-A'



SECTION: B-B'

ENG. NO.	a	b	c	d	e	f	g	WIRE SIZE	INSUL. DIA.	MATING TAB THICK'
35072-9702	15.1	7.7	2.6	3.2	4.8	4.8	2.92	AWG#22-18	1.5-3.1	0.8 t
35072-9802	15.1	7.7	3.7	3.6	5.0	5.5		AWG#18-14	2.2-3.4	
35072-9902	14.4	8.4	4.6	5.4	6.8	6.2		AWG#14-10	3.0-5.1	
35072-9712	15.1	7.7	2.6	3.2	4.8	4.8	3.00	AWG#22-18	1.5-3.1	1.0 t

- NOTES
- MATERIAL: TIN-PLATED BRASS 0.4mm THICK'
 - APPLICABLE HOUSING: 35196-0110
 - MATING TAB WIDTH : 6.35mm

REDRAWN ECN NO. KOR2006-0031 DRWN: J.B.JIN 05/08/30 CHK: W.Y.YANG APPR: C.W.LEE	DESCRIPTION MAJOR CRITICAL C=0	QUALITY SYMBOLS	GENERAL TOLERANCES: (UNLESS SPECIFIED)	SCALE 5:1	DESIGN UNITS <input checked="" type="checkbox"/> mm <input type="checkbox"/> INCH	THIRD ANGLE PROJECTION <input type="checkbox"/> FIRST ANGLE <input checked="" type="checkbox"/> THIRD ANGLE	DIMENSIONS: <input type="checkbox"/> mm <input type="checkbox"/> INCH <input checked="" type="checkbox"/> mm ONLY	SHT REV			
		4 PLACES ±0. ±-	3 PLACES ±0. ±-	2 PLACES ±0.30 ±-	1 PLACE ±0.30 ±-	ANGULAR: ± 1 °	DRAFT WHERE APPLICABLE MUST REMAIN WITHIN DIMENSIONS	DRAWN BY & DATE W.Y.YANG 96/03/19	CHECKED BY & DATE B.K.CHOI 96/03/19	APPROVED BY & DATE C.W.LEE 96/03/19	TITLE: .250 MP-LOCK RECEPTACLE TERMINAL
		MOLEX INCORPORATED			CAD FILENAME W.Y.YANG 93/03/19	MATERIAL NO. SEE TABLE	DRAWING NO. SD-35072-9702	SHEET NO. 1 OF 1			
		THIS DRAWING CONTAINS INFORMATION THAT IS PROPRIETARY TO MOLEX INCORPORATED AND SHOULD NOT BE USED WITHOUT WRITTEN PERMISSION.						SIZE B			

8 7 6 5 4 3 2 1 KOREA MX-A3