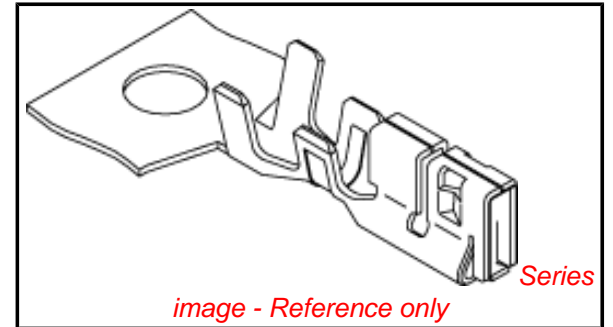


PLEASE CHECK WWW.MOLEX.COM FOR LATEST PART INFORMATION

Part Number: **0593708000**
Status: **Active**
Description: 2.00mm (.079") Pitch Crimp Terminal, Female, 22-28 AWG, For 51216, Reel

Documents:

3D Model	Product Specification PS-51216-007 (PDF)
Drawing (PDF)	Product Specification PS-51353-010 (PDF)
Product Specification PS-51216-005 (PDF)	RoHS Certificate of Compliance (PDF)
Product Specification PS-51216-006 (PDF)	



General

Product Family	Crimp Terminals
Series	<u>59370</u>
Crimp Quality Equipment	Yes
Product Name	N/A

Physical

Gender	Female
Material - Metal	Phosphor Bronze
Material - Plating Mating	Tin
Material - Plating Termination	Tin
Packaging Type	Reel
Plating min: Mating (µin)	36
Plating min: Mating (µm)	0.90
Plating min: Termination (µin)	36
Plating min: Termination (µm)	0.90
Termination Interface: Style	Crimp or Compression
Wire Insulation Diameter	0.90-1.50mm (.035-.059")
Wire Size AWG	22, 24, 26, 28
Wire Size mm ²	N/A

Electrical

Current - Maximum per Contact	2.5A
Voltage - Maximum	250V

Material Info

Reference - Drawing Numbers

Product Specification	PS-51216-005, PS-51216-006, PS-51216-007, PS-51353-010, RPS-51216-003, RPS-51216-004, RPS-51216-005, RPS-51216-006, RPS-51216-007, RPS-51216-008, RPS-51216-010, RPS-51216-011, RPS-51216-013, RPS-51216-014, RPS-51353-015, RPS-51353-021, RPS-51353-023, RPS-51353-028
Sales Drawing	SD-59370-004

EU RoHS

ELV and RoHS Compliant
REACH SVHC Contains SVHC: No
Halogen-Free Status

China RoHS



Need more information on product environmental compliance?

Email productcompliance@molex.com
 For a multiple part number RoHS Certificate of Compliance, [click here](#)

Please visit the [Contact Us](#) section for any non-product compliance questions.

Search Parts in this Series

59370Series

Use With

51216

Application Tooling | FAQ

Tooling specifications and manuals are found by selecting the products below. Crimp Height Specifications are then contained in the Application Tooling Specification document.

Global

Description	Product #
Extraction Tool	<u>0638132700</u>
Hand Crimp Tool for 2.00mm (.079") Crimp Terminals, 26-28 AWG	<u>0638192600</u>
FineAdjust™ Applicator for 2.00mm (.079:) Crimp Terminal, AWG 22-28	<u>0639007600</u>
T2 Terminator Tooling Die for	<u>0639107600</u>

2.00mm (.079")
Crimp Terminal,
22-28 AWG

Japan

Description	Product #
--------------------	------------------

Applicator for M211A	<u>0574043000</u>
----------------------	-------------------

Bench Press, 18-22

AWG, for 59370

and 56134 Crimp

Terminal

Side-Feed Applicator	<u>0574043200</u>
----------------------	-------------------

for Full-Auto Machine

This document was generated on 04/15/2010

PLEASE CHECK WWW.MOLEX.COM FOR LATEST PART INFORMATION

DWG. NO. SD-59370-004

F

D

V

C

B

DO NOT SCALE DRAWING

8 7 6 5 4 3 2 1

F

E

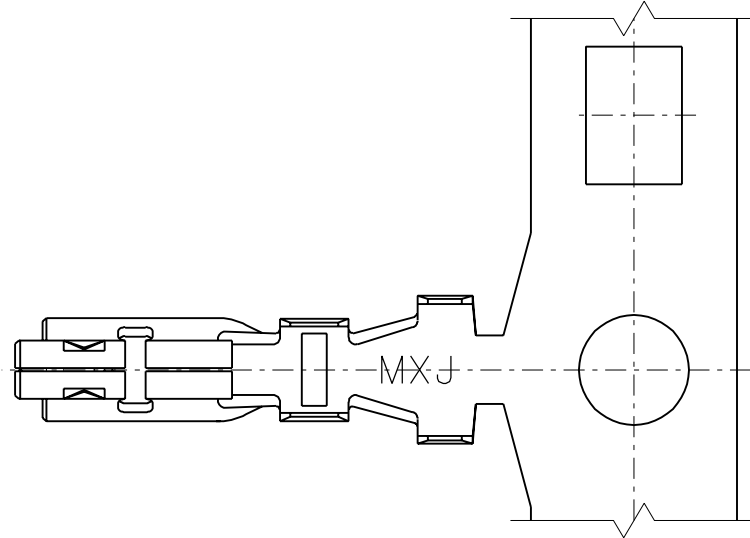
D

C

B

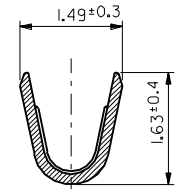
A

59370004.SOI

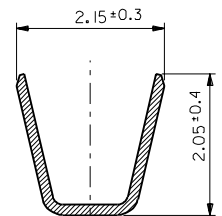


注記
NOTES

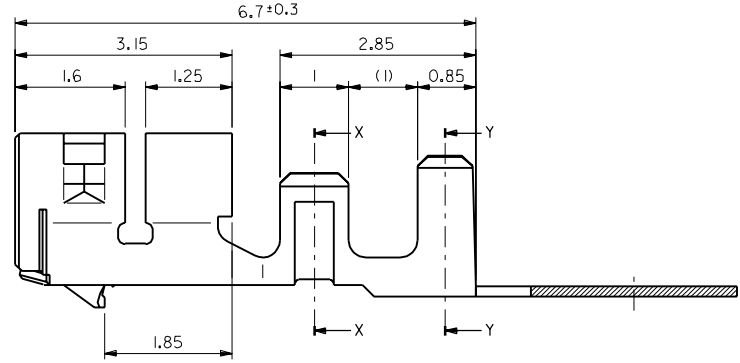
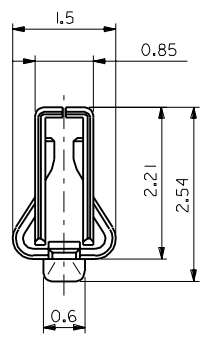
- 1. 使用材料 : リン青銅 銅メッキ (t=0.15)
MATERIAL : PRE-TINNED PHOSPHOR BRONZE (t=0.15)
- 2. 適合ハウジング : 51216シリーズ
APPLICABLE HOUSING : 51216 SERIES



SECT. X-X



SECT. Y-Y



59370-8100	バラ状 LOOSE
59370-8000	連鎖状 CHAIN
MATERIAL NO.	端子形状 FORM

図4NO. DRWN: CHK: APPR:	図3NO. DRWN: CHK: APPR:	図2NO. DRWN: CHK: APPR:	図1NO. DRWN: CHK: APPR:	RELEASED 図0NO. JC2000-0550 DRWN:T.YASUI '00/2/22 CHK: T.YAMAGUCHI APPR:M.FUKUSHIMA 2/22	MATERIAL 材料 注記参照 SEE NOTES	GENERAL TOLERANCES: (UNLESS SPECIFIED) 一般公差		59370-8*00		MODEL NO.		DIMENSIONS:		SHT		REV	
					FINISH 仕上付 //	WIRE RANGE 適用線径範囲 AWG #22 - #28	ANGLE 角度 +3°	SCALE 15:1 <input checked="" type="checkbox"/> mm <input type="checkbox"/> INCH	DESIGN UNITS <input checked="" type="checkbox"/> mm <input type="checkbox"/> INCH	DRAWN BY & DATE T.YASUI '00/ 2/22	CHECKED BY & DATE T.YAMAGUCHI '00/ 2/22	APPROVED BY & DATE M.FUKUSHIMA '00/ 2/22	TITLE: 2.0 mm WIRE TO BOARD CONN. CRIMP RECEPTACLE	<input type="checkbox"/> mm <input type="checkbox"/> INCH <input checked="" type="checkbox"/> mm ONLY	<input type="checkbox"/> mm <input type="checkbox"/> INCH <input checked="" type="checkbox"/> mm ONLY	<input checked="" type="checkbox"/> mm ONLY	REVISION ON CAD ONLY
8	7	6	5	4	3	2	1	EN-02J(097) MXJ-54									