

Specification Status: Released

Maximum Electrical Rating
Operating Voltage: 12Vdc
Interrupt Current: 100A

Chip Size: 5 X 12mm

Leads: Nickel 1/4H
0.125mm nominal thickness

Solder: Lead-free

Tape: None

Marking: None

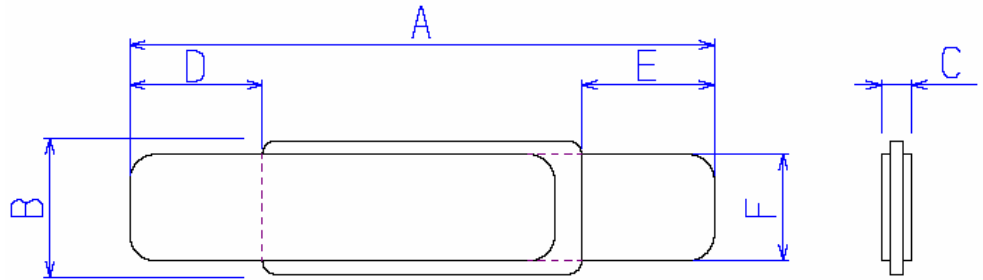


TABLE I. DIMENSIONS:

	A		B		C		D		E		F	
	MIN	MAX	MIN	MAX	MIN	MAX	MIN	MAX	MIN	MAX	MIN	MAX
mm:	20.9	23.1	4.9	5.1	---	0.7	4.1	6.0	4.1	6.0	3.9	4.1
in*:	(0.82)	(0.91)	(0.19)	(0.20)	--	(0.03)	(0.16)	(0.24)	(0.16)	(0.24)	(0.15)	(0.16)

*Rounded off approximation

TABLE II. PERFORMANCE RATINGS: As measured in Mueller Kelvin Clips model BU-75K.

I HOLD	CURRENT TRIP LIMITS								TIME TO TRIP		REFERENCE RESISTANCE		ONE-HOUR POST-TRIP RESISTANCE		TRIPPED-STATE POWER DISSIPATION			
	AMPS 25°C		AMPS AT 0°C		AMPS AT 25°C		AMPS AT 60°C		AMPS AT --°C		SECONDS AT 25°C, 10.0A		OHMS AT 25°C		OHMS AT 25°C		WATTS AT 25°C, 12V	
	HOLD	TRIP	HOLD	TRIP	HOLD	TRIP	HOLD	TRIP	HOLD	TRIP	TYP	MAX	MIN	MAX	TYP	MAX	TYP	MAX
	2.3	3.4	6.6	2.3	5.0	0.9	2.3	---	---	2.4	5		0.012	0.018	0.031	0.036	1.4	2.5

Agency Recognitions:
Reference Documents:
Precedence:
Effectivity:
CAUTION:

UL, TUV, CSA
PS300
This specification takes precedence over documents referenced herein.
Reference documents shall be the issue in effect on the date of invitation for bid.
Operation beyond the rated voltage or current may result in rupture, electrical arcing or flame.

Materials Information:

ROHS Compliant

Directive 2002/95/EC
Compliant

ELV Compliant

Directive 2000/53/EC
Compliant

Pb-Free

