

**PLEASE CHECK WWW.MOLEX.COM FOR LATEST PART INFORMATION**

**Part Number:** [0511140910](#)  
**Status:** **Active**  
**Description:** 3.50mm (.138") Pitch Wire-to-Wire Plug Housing, Positive Lock, With Optional Panel Mount, 9 Circuits

**Documents:**

[3D Model](#) [Product Specification PS-51067-008 \(PDF\)](#)  
[Drawing \(PDF\)](#) [RoHS Certificate of Compliance \(PDF\)](#)

**Agency Certification**

CSA	LR19980
TUV	R72081037
UL	E29179

**General**

Product Family	Crimp Housings
Series	<a href="#">51114</a>
Product Name	N/A

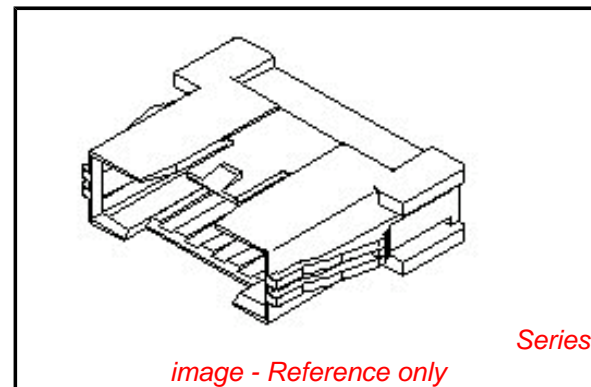
**Physical**

Circuits (maximum)	9
Color - Resin	Natural
Flammability	94V-0
Gender	Male
Glow-Wire Compliant	No
Material - Resin	Polyester
Number of Rows	1
Packaging Type	Bag
Panel Mount	No
Pitch - Mating Interface (in)	0.138 In
Pitch - Mating Interface (mm)	3.50 mm
Stackable	No
Temperature Range - Operating	-40°C to +105°C

**Material Info**

**Reference - Drawing Numbers**

Product Specification	PS-51067-008
Sales Drawing	SD-51114-**10



**EU RoHS**

**ELV and RoHS Compliant**  
**REACH SVHC Contains SVHC: No**  
**Halogen-Free Status**  
**Not Reviewed**

**China RoHS**



**Need more information on product environmental compliance?**

Email [productcompliance@molex.com](mailto:productcompliance@molex.com)  
 For a multiple part number RoHS Certificate of Compliance, [click here](#)

Please visit the [Contact Us](#) section for any non-product compliance questions.

**Search Parts in this Series**

[51114Series](#)

**Mates With**

[51067](#)

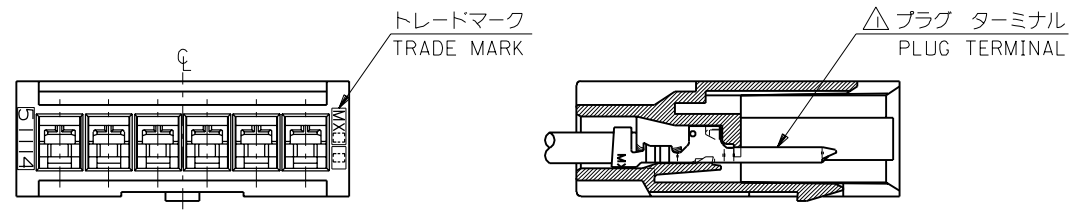
**Use With**

[50419](#)

**PLEASE CHECK WWW.MOLEX.COM FOR LATEST PART INFORMATION**

DWG. NO. SD-51114-\*\*\*10

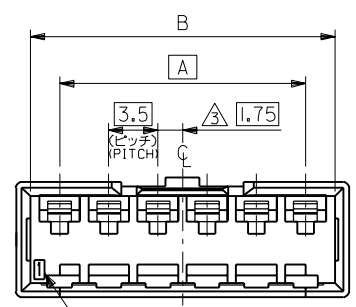
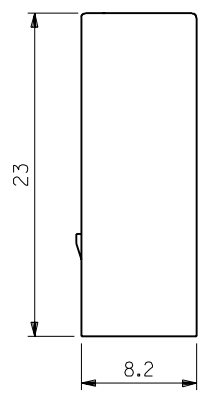
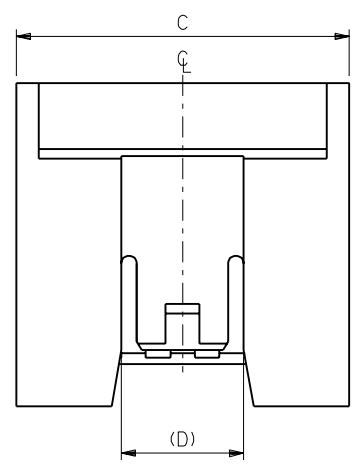
MM DIMENSIONS IN METRIC DO NOT SCALE DRAWING



ターミナル装着状態図  
TERMINAL ASSEMBLY DRAWING

注記 NOTES

- △ 適合プラグ ターミナル : 50419-\*\*\*\*  
APPLICABLE PLUG TERMINAL : 50419-\*\*\*\*
- 2. 嵌合相手 : 51067 シリーズ  
MATE WITH : 51067 SERIES
- △ 偶数極の製品に適用。  
APPLY EVEN CIRCUIT PRODUCTS.



回路番号  
CIRCUIT NO.

8.7	37.7	35.7	31.5	51114-1010	10	
	34.2	32.2	28.0	-0910	9	
	30.7	28.7	24.5	-0810	8	
	27.2	25.2	21.0	-0710	7	
	23.7	21.7	17.5	-0610	6	
	20.2	18.2	14.0	-0510	5	
	8.7	16.7	14.7	-0410	4	
	6.1	13.2	11.2	-0310	3	
	6.1	9.7	7.7	3.5	51114-0210	2
(D)	C	B	A	ENG. NO.	CKT. 極数	

材料 MATERIAL		PBT, UL94V-0	
仕上げ FINISH		— # —	
適用電線範囲 WIRE RANGE		— # —	
被覆外径 INS. RANGE		— # —	
角度 ANGLE	±3°	新規作成 (J30900)	93/9/7
30以上 OVER	+0.3	変更内容	DR. 日付
10以上 30未満 UNDER	+0.25	記号 LTR	DR. CHK. DATE
10未満 UNDER	+0.2	REVISION RECORD	REVISION RECORD
一般公差 GENERAL TOLERANCES		SCALE 3 : 1	

材料 MATERIAL		PBT, UL94V-0	
仕上げ FINISH		— # —	
適用電線範囲 WIRE RANGE		— # —	
被覆外径 INS. RANGE		— # —	
DRAWN BY '93/5/24		CHK'D BY '93/9/7	
M.FUJIKURA		H.HIRAMOTO	
APP'D BY '93/9/7		尺 度	
M.FUKUSHIMA		SCALE 3 : 1	
モレックス株式会社		REVISE ONLY ON CAD SYSTEM	
TITLE 名称		3.5 WIRE TO WIRE CONN. PLUG HOUSING	
DWG. NO.		REV	
SD-51114-***10		0	