

PLEASE CHECK WWW.MOLEX.COM FOR LATEST PART INFORMATION

Part Number: [0015311046](#)
Status: **Active**
Overview: [standard_093](#)
Description: 2.36mm (.093") Diameter Standard .093" Pin and Socket Header, Vertical, with Beveled Plastic Peg, 4 Circuits

Documents:

[3D Model](#) [RoHS Certificate of Compliance \(PDF\)](#)
[Drawing \(PDF\)](#)

Agency Certification

| | |
|-----|-----------|
| CSA | LR19980 |
| TUV | R72081037 |
| UL | E29179 |

General

| | |
|----------------|------------------------------|
| Product Family | PCB Headers |
| Series | 5219 |
| Application | Wire-to-Board |
| Overview | standard_093 |
| Product Name | Standard .093" |

Physical

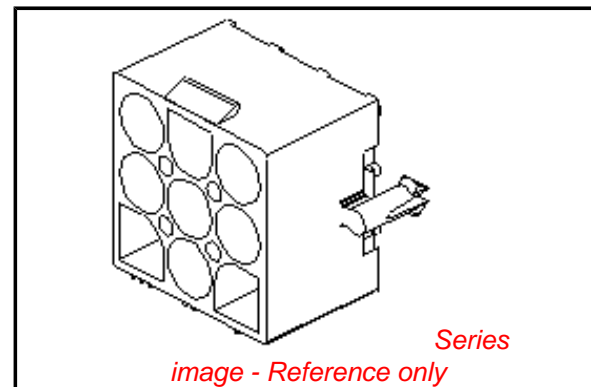
| | |
|--------------------------------|-----------------|
| Breakaway | No |
| Circuits (Loaded) | 4 |
| Circuits (maximum) | 4 |
| Durability (mating cycles max) | 30 |
| First Mate / Last Break | No |
| Flammability | 94V-2 |
| Glow-Wire Compliant | No |
| Guide to Mating Part | No |
| Keying to Mating Part | None |
| Lock to Mating Part | Yes |
| Material - Plating Mating | Tin |
| Material - Plating Termination | Tin |
| Number of Rows | 1 |
| Orientation | Vertical |
| PCB Locator | Yes |
| PCB Retention | Yes |
| PCB Thickness Recommended (in) | 0.062 In |
| PCB Thickness Recommended (mm) | 1.60 mm |
| Packaging Type | Bag |
| Pitch - Mating Interface (in) | 0.264 In |
| Pitch - Mating Interface (mm) | 6.71 mm |
| Polarized to PCB | Yes |
| Shrouded | Fully |
| Stackable | No |
| Surface Mount Compatible (SMC) | No |
| Temperature Range - Operating | -40°C to +105°C |
| Termination Interface: Style | Through Hole |

Electrical

| | |
|-------------------------------|------|
| Current - Maximum per Contact | 9A |
| Voltage - Maximum | 600V |

Material Info

| | |
|-----------------|----------|
| Old Part Number | 5219-04A |
|-----------------|----------|



EU RoHS

ELV and RoHS Compliant
REACH SVHC
 Not Reviewed
Halogen-Free Status
 Not Reviewed

China RoHS



Need more information on product environmental compliance?

Email productcompliance@molex.com
 For a multiple part number RoHS Certificate of Compliance, [click here](#)

Please visit the [Contact Us](#) section for any non-product compliance questions.

Search Parts in this Series

[5219Series](#)

Mates With

[3191 Pin and Socket Receptacle Housing](#)

Reference - Drawing Numbers

Packaging Specification

Product Specification

Sales Drawing

SPK-5219-001

RPS-3191-002

SD-5219-003, SD-5219-04A*

This document was generated on 05/24/2010

PLEASE CHECK WWW.MOLEX.COM FOR LATEST PART INFORMATION

10

9

8

7

6

5

4

3

2

1

F

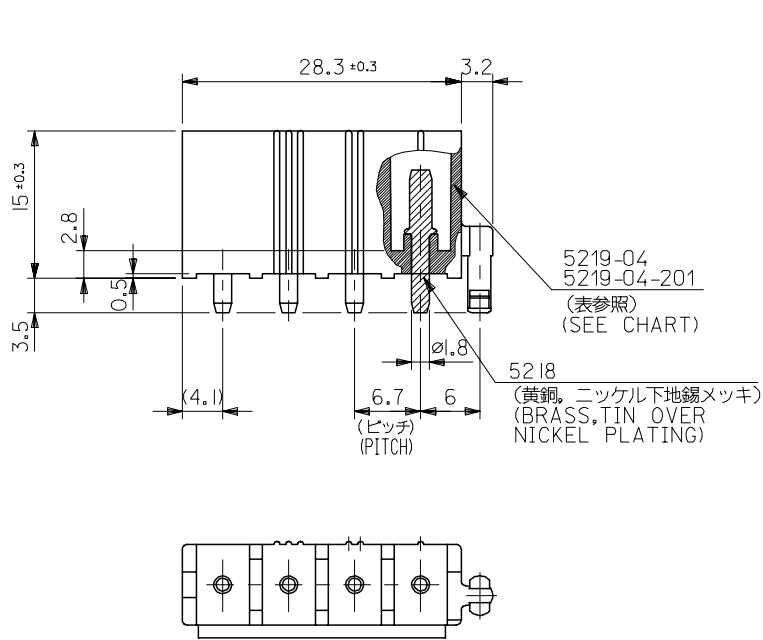
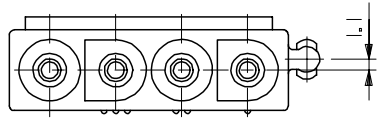
E

D

C

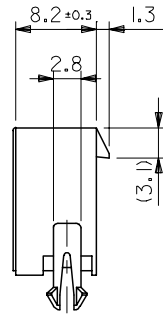
B

A



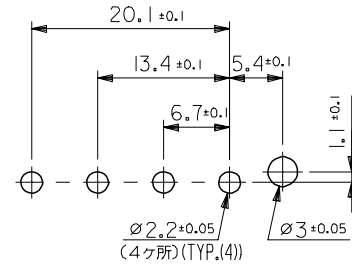
5219-04
5219-04-201
(表参照)
(SEE CHART)

5218
(黄銅、ニッケル下地鍍メッキ)
(BRASS, TIN OVER
NICKEL PLATING)



注記:
NOTES:

1. 適合リセプタクルハウジング: 3191-04R*
TO BE MATED WITH RECEPTACLE HOUSING :
3191-04R*



基板取付穴推奨寸法

RECOMMENDED P.C. BOARD HOLE DIMENSIONS

| | | |
|--------------|------------|----------------------|
| 5219-04A-201 | 39-28-7048 | NYLON66,94V-0 |
| 5219-04A | 15-31-1046 | NYLON66,94V-2 |
| ENG. NO. | EDP NO. | ハウジングの材質 MATERIAL |

| | | | | | | |
|---|--|--------------|-----------------------------|--|--|---------------------------|
| REVISED EC NO: J2006-0987 DRWN: NABE 2005/09/29 CHKD: TOYODA 2005/09/30 APPR: NUKITA 2005/10/03 | GENERAL TOLERANCES (UNLESS SPECIFIED) | | DIMENSION STYLE MM ONLY | SCALE 2:1 | DESIGN UNITS METRIC | THIRD ANGLE PROJECTION |
| | 10 UNDER | ±0.2 | DRAWN BY K. KOHAMA | DATE '00/05/29 | TITLE NEW INTERNATIONAL CONN 4 POS. HEADER | |
| | 10 OVER 30 UNDER | ±0.25 | CHECKED BY M. FUKUSHIMA | DATE '00/05/29 | MOLEX INCORPORATED | |
| | 30 OVER | ±0.3 | APPROVED BY M. FUKUSHIMA | DATE '00/05/29 | DOCUMENT NO. SD-5219-003 | SHEET NO. 1 OF 1 |
| M | DESCRIPTION | ANGULAR ±3 ° | MATERIAL NO. SEE CHART | THIS DRAWING CONTAINS INFORMATION THAT IS PROPRIETARY TO MOLEX INCORPORATED AND SHOULD NOT BE USED WITHOUT WRITTEN PERMISSION | | |

9

8

7

6

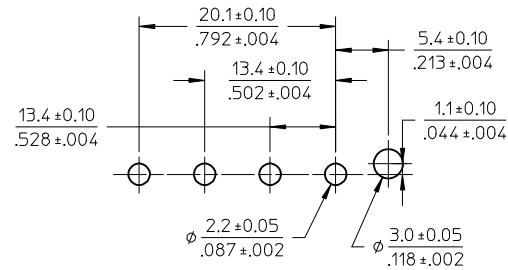
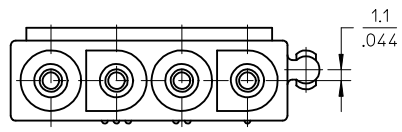
5

4

3

2

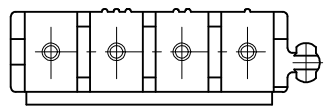
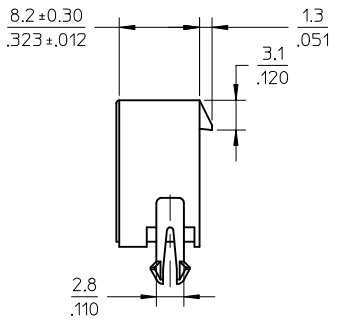
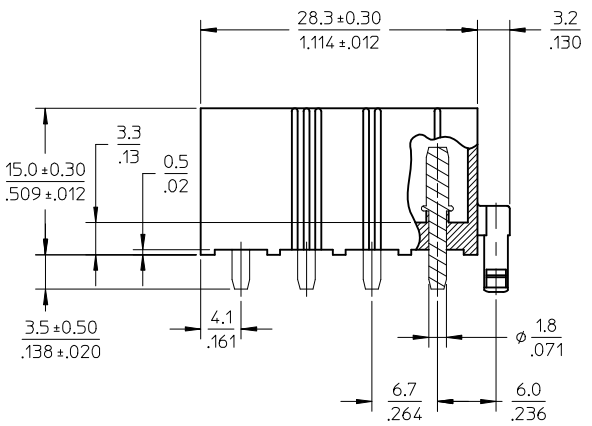
| | | |
|----------|------------|-----------------|
| CIRCUITS | EDP NO. | ENGINEERING NO. |
| 4 | 15-31-1046 | 5219-04A |



RECOMMENDED P.C.B. HOLE DIM.

NOTES:

- 1) MATERIAL:
HOUSING: NYLON 6/6, UL94V-2, COLOR: NATURAL
TERMINAL: C2700W BRASS
- 2) FINISH: 0.000003/(.0000001) MIN. TIN OVERALL OVER
0.000001/(.00000004) MIN. NICKEL OVERALL
- 3) PRODUCT SPECIFICATION: NONE
- 4) PACKAGING: NONE
- 5) MATES WITH: 3191-04R SERIES
- 6) PARTS CONFORM TO CLASS 'B' REQUIREMENTS OF COSMETIC SPECIFICATION PS-45499-002.



| | | | | | | | |
|--|-------------------|--|--|---|-----------|--------------|---|
| REMOVED DIMENSION EC NO: UCP2009-2076 DRAWN: TRENES 2009/02/24 CHKD: AELHAG 2009/03/13 APPR: FSMITH 2009/04/15 | DESCRIPTION K1 | QUALITY SYMBOLS | GENERAL TOLERANCES (UNLESS SPECIFIED) | DIMENSION STYLE | SCALE | DESIGN UNITS | THIRD ANGLE PROJECTION |
| | | ▽=0 ▽=0 | mm INCH 4 PLACES ± --- ± --- 3 PLACES ± --- ± .005 2 PLACES ± 0.13 ± .010 1 PLACE ± 0.25 ± --- ANGULAR ± 1° | IN/MM DRAWN BY DATE A. ASO 1979/04/08 CHECKED BY DATE MENOMOTO 1979/04/10 APPROVED BY DATE | 2:1 | METRIC | THIRD ANGLE PROJECTION NEW INTERNATIONAL CONN. HEADER AND ASSY |
| | | DRAFT WHERE APPLICABLE MUST REMAIN WITHIN DIMENSIONS | MATERIAL NO. | DOCUMENT NO. | SHEET NO. | | |
| | | SIZE B | 15-31-1046 | SD-5219-04A* | 1 OF 1 | | |