

CMDSH2-3
SURFACE MOUNT
HIGH CURRENT
SILICON SCHOTTKY DIODE

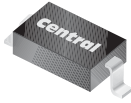


www.centrasemi.com

DESCRIPTION:

The CENTRAL SEMICONDUCTOR CMDSH2-3 type is a Silicon Schottky Diode, manufactured in a **SUPERmini™** surface mount package, designed for applications requiring a low forward voltage drop.

SUPERmini™



SOD-323 CASE

MARKING CODE: S2

MAXIMUM RATINGS: ($T_A=25^\circ\text{C}$)

Peak Repetitive Reverse Voltage
Average Forward Current
Peak Forward Surge Current, $t_p=10\text{ms}$
Power Dissipation
Operating and Storage Junction Temperature
Thermal Resistance

SYMBOL

SYMBOL		UNITS
V_{RRM}	30	V
I_O	200	mA
I_{FSM}	1.0	A
P_D	250	mW
T_J, T_{stg}	-65 to +150	$^\circ\text{C}$
θ_{JA}	500	$^\circ\text{C/W}$

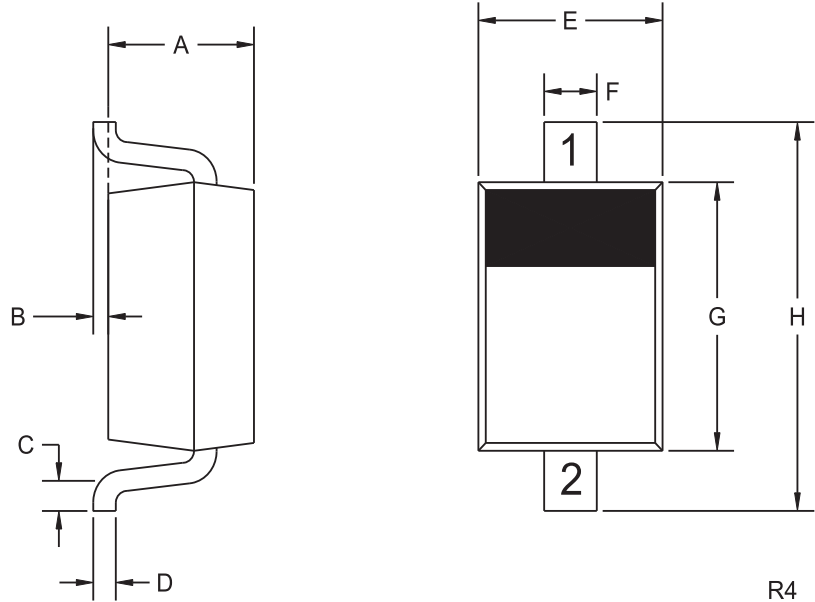
ELECTRICAL CHARACTERISTICS: ($T_A=25^\circ\text{C}$)

SYMBOL	TEST CONDITIONS	MIN	TYP	MAX	UNITS
I_R	$V_R=30\text{V}$		0.40	50	μA
BV_R	$I_R=100\mu\text{A}$	30			V
V_F	$I_F=2.0\text{mA}$		0.26		V
V_F	$I_F=15\text{mA}$		0.32		V
V_F	$I_F=100\text{mA}$		0.42		V
V_F	$I_F=200\text{mA}$		0.49	0.55	V
C_T	$V_R=10\text{V}, f=1.0\text{MHz}$		15		pF

CMDSH2-3
SURFACE MOUNT
HIGH CURRENT
SILICON SCHOTTKY DIODE



SOD-323 CASE - MECHANICAL OUTLINE



LEAD CODE:

- 1) CATHODE
- 2) ANODE

MARKING CODE: S2

SYMBOL	DIMENSIONS			
	INCHES		MILLIMETERS	
	MIN	MAX	MIN	MAX
A	0.031	0.039	0.80	1.00
B	0.000	0.004	0.00	0.10
C	0.008	-	0.20	-
D	0.004	0.007	0.11	0.19
E	0.045	0.053	1.15	1.35
F	-	0.014	-	0.35
G	0.063	0.071	1.60	1.80
H	0.094	0.102	2.40	2.60

SOD-323 (REV: R4)

R3 (8-January 2010)