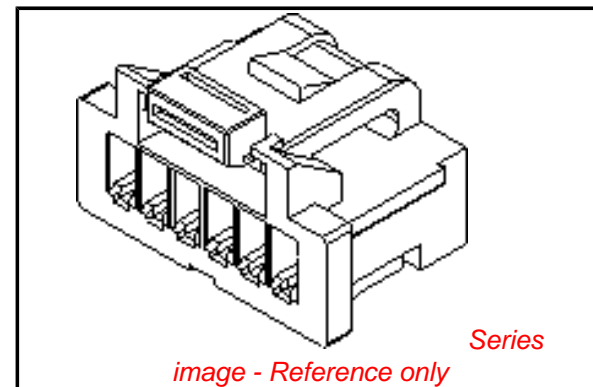


**PLEASE CHECK WWW.MOLEX.COM FOR LATEST PART INFORMATION**

**Part Number:** [5013301400](#)  
**Status:** **Active**  
**Overview:** [picoclasp](#)  
**Description:** 1.00mm (.039") Pitch Pico-Clasp™ Wire-to-Board Female Housing, Single Row, with Positive Lock, 14 Circuits

**Documents:**

[3D Model](#) [Product Specification PS-501568-001 \(PDF\)](#)  
[Drawing \(PDF\)](#) [RoHS Certificate of Compliance \(PDF\)](#)  
[Product Specification PS-501331-001 \(PDF\)](#)



**General**

Product Family Crimp Housings  
 Series [501330](#)  
 Overview [picoclasp](#)  
 Product Name Pico-Clasp™

**Physical**

Circuits (maximum) 14  
 Color - Resin White  
 Gender Female  
 Glow-Wire Compliant No  
 Lock to Mating Part Yes  
 Material - Resin Nylon  
 Number of Rows 1  
 Packaging Type Bag  
 Panel Mount No  
 Pitch - Mating Interface (in) 0.039 In  
 Pitch - Mating Interface (mm) 1.00 mm  
 Polarized to Mating Part Yes  
 Stackable No  
 Temperature Range - Operating -40°C to +85°C

**Electrical**

Current - Maximum per Contact 1A

**Material Info**

**Reference - Drawing Numbers**

Packaging Specification [SPK-501330-001](#)  
 Product Specification [PS-501331-001](#), [PS-501568-001](#), [RPS-501331-001](#),  
[RPS-501331-002](#), [RPS-501331-003](#), [RPS-501331-005](#),  
[RPS-501331-006](#), [RPS-501331-007](#), [RPS-501568-003](#),  
[RPS-501568-004](#), [RPS-501568-005](#), [RPS-501940-001](#)  
 Sales Drawing [SD-501330-002](#)

**EU RoHS**

**ELV and RoHS  
 Compliant**  
**REACH SVHC**  
 Not Reviewed  
**Halogen-Free  
 Status**  
**Not Reviewed**

**China RoHS**



**Need more information on product  
 environmental compliance?**

Email [productcompliance@molex.com](mailto:productcompliance@molex.com)  
 For a multiple part number RoHS Certificate of  
 Compliance, [click here](#)

Please visit the [Contact Us](#) section for any  
 non-product compliance questions.

**Search Parts in this Series**

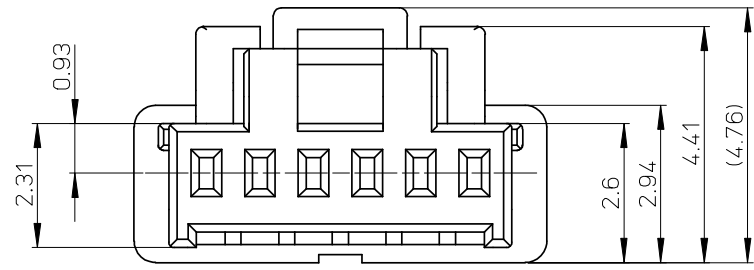
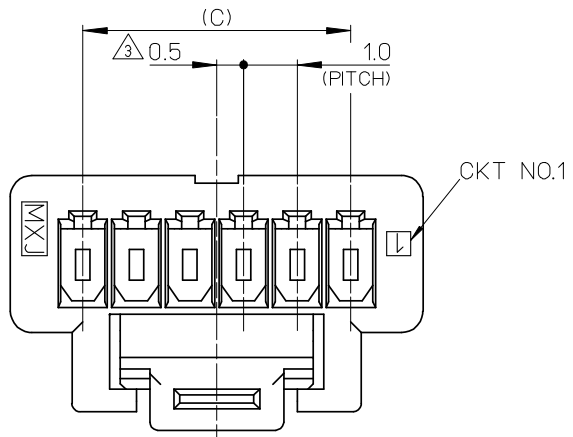
[501330Series](#)

**Mates With**

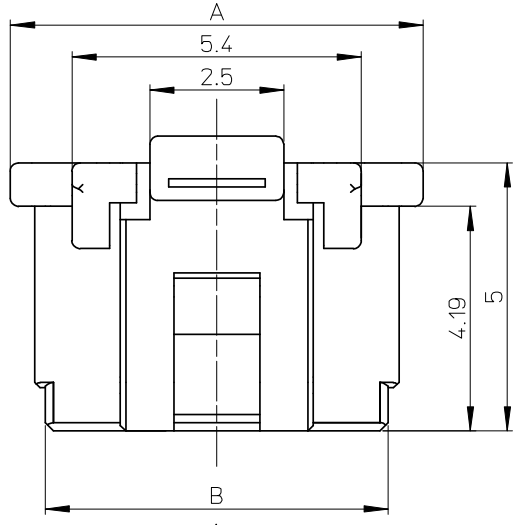
[501331](#) PCB Header . [501568](#) PCB Header

**Use With**

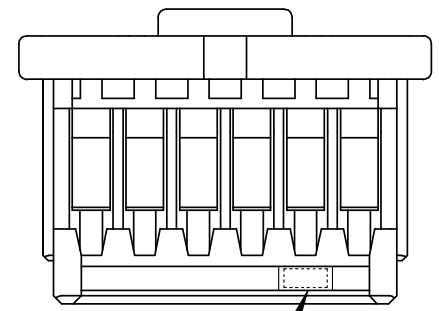
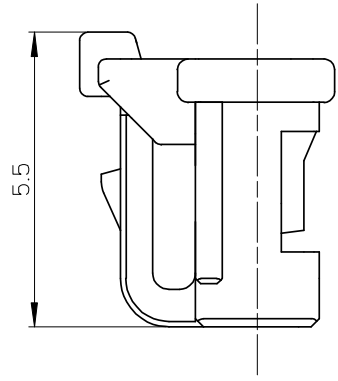
[501334](#) Crimp Terminal



VIEW "D"



VIEW D



CAV NO.

NOTES.

- 適合ターミナル : 501334-\*\*\*\*  
APPLICABLE TERMINAL : 501334-\*\*\*\*
- 嵌合相手 : 501331-\*\*\*\*  
MATE WITH : 501331-\*\*\*\*
- 偶数極に適用  
APPLY FOR EVEN CIRCUIT SIZE
- 2-5極は、SD-501330-001を参照下さい。  
REFER TO SD-501330-001 ABOUT 2-5CKT.
- ELV 及び RoHS適合品  
ELV AND RoHS COMPLIANT.
- 材質  
MATERIAL  
66ナイロン 66NYLON  
ガラス無充填 GLASS FILLED 0%  
UL94V-0

※対応可能な極数は、別途お問い合わせ下さい。

|      |      |      |              |      |                            |
|------|------|------|--------------|------|----------------------------|
| 14.0 | 15.4 | 16.7 | 501330-15**  | 15   | 501330-**0*<br>501330-**3* |
| 13.0 | 14.4 | 15.7 | 501330-14**  | 14   |                            |
| 12.0 | 13.4 | 14.7 | 501330-13**  | 13   |                            |
| 11.0 | 12.4 | 13.7 | 501330-12**  | 12   |                            |
| 10.0 | 11.4 | 12.7 | 501330-11**  | 11   |                            |
| 9.0  | 10.4 | 11.7 | 501330-10**  | 10   |                            |
| 8.0  | 9.4  | 10.7 | 501330-09**  | 9    |                            |
| 7.0  | 8.4  | 9.7  | 501330-08**  | 8    |                            |
| 6.0  | 7.4  | 8.7  | 501330-07**  | 7    |                            |
| 5.0  | 6.4  | 7.7  | 501330-06**  | 6    |                            |
| C    | B    | A    | MATERIAL NO. | CKT. | MODEL NO.                  |

|   |  |       |                            |                    |  |                        |                        |  |
|---|--|-------|----------------------------|--------------------|--|------------------------|------------------------|--|
| REVISED<br>EC NO: J2008-2811<br>DRAWN: NAKATA 2008/01/24<br>CHKD: MATSUMOTO 2008/04/24<br>APPR: NUKITA 2008/04/25 | GENERAL TOLERANCES (UNLESS SPECIFIED)                      |       | DIMENSION STYLE<br>MM ONLY |                    | SCALE<br>10:1  | DESIGN UNITS<br>METRIC | THIRD ANGLE PROJECTION |  |
|   | 10 UNDER   | ±0.2  | DRAWN BY<br>NYOSHIDA       | DATE<br>2004/07/30 | TITLE<br>1.0 WIRE TO BOARD CONN.<br>1-ROW RECEPTACLE HOUSING<br>6-15CKT. |                        |                        |  |
|   | 10 OVER 30 UNDER   | ±0.25 | CHECKED BY<br>MYAGI        | DATE<br>2004/07/30 |  |                        |                        |  |
|   | 30 OVER  | ±0.3  | APPROVED BY<br>MIYAZAWA    | DATE<br>2004/07/30 | MOLEX INCORPORATED   |                        |                        |  |
|   | ANGULAR  | ±3 °  | MATERIAL NO.               | DOCUMENT NO.       |  |                        |                        |  |
| D   | DRAFT WHERE APPLICABLE<br>MUST REMAIN<br>WITHIN DIMENSIONS |       | SEE TABLE                  |                    | SD-501330-002  |                        | EN-02JA(021)           |  |

10 9 8 7 6 5 4 3 2 1

F

E

D


C

B

A

| 紫<br>VIOLET  | 橙<br>ORANGE  | 茶<br>BROWN   | 緑<br>GREEN   | 青<br>BLUE    | 黄 <sup>ⓓ</sup><br>YELLOW | 赤<br>RED     | 色<br>COLOR |             |
|--------------|--------------|--------------|--------------|--------------|--------------------------|--------------|------------|-------------|
| 501330-1539  | 501330-1538  | 501330-1537  | 501330-1536  | 501330-1534  | 501330-1533              | 501330-1532  | 15         | 501330-**3* |
| 501330-1439  | 501330-1438  | 501330-1437  | 501330-1436  | 501330-1434  | 501330-1433              | 501330-1432  | 14         |             |
| 501330-1339  | 501330-1338  | 501330-1337  | 501330-1336  | 501330-1334  | 501330-1333              | 501330-1332  | 13         |             |
| 501330-1239  | 501330-1238  | 501330-1237  | 501330-1236  | 501330-1234  | 501330-1233              | 501330-1232  | 12         |             |
| 501330-1139  | 501330-1138  | 501330-1137  | 501330-1136  | 501330-1134  | 501330-1133              | 501330-1132  | 11         |             |
| 501330-1039  | 501330-1038  | 501330-1037  | 501330-1036  | 501330-1034  | 501330-1033              | 501330-1032  | 10         |             |
| 501330-0939  | 501330-0938  | 501330-0937  | 501330-0936  | 501330-0934  | 501330-0933              | 501330-0932  | 9          |             |
| 501330-0839  | 501330-0838  | 501330-0837  | 501330-0836  | 501330-0834  | 501330-0833              | 501330-0832  | 8          |             |
| 501330-0739  | 501330-0738  | 501330-0737  | 501330-0736  | 501330-0734  | 501330-0733              | 501330-0732  | 7          |             |
| 501330-0639  | 501330-0638  | 501330-0637  | 501330-0636  | 501330-0634  | 501330-0633              | 501330-0632  | 6          |             |
| MATERIAL NO. | MATERIAL NO. | MATERIAL NO. | MATERIAL NO. | MATERIAL NO. | MATERIAL NO.             | MATERIAL NO. | CKT.       | MODEL NO.   |

| 白<br>WHITE   | 色<br>COLOR |             |
|--------------|------------|-------------|
| 501330-1500  | 15         | 501330-**00 |
| 501330-1400  | 14         |             |
| 501330-1300  | 13         |             |
| 501330-1200  | 12         |             |
| 501330-1100  | 11         |             |
| 501330-1000  | 10         |             |
| 501330-0900  | 9          |             |
| 501330-0800  | 8          |             |
| 501330-0700  | 7          |             |
| 501330-0600  | 6          |             |
| MATERIAL NO. | CKT.       | MODEL NO.   |

|   |                                       |   |                            |                    |  |                        |                        |  |
|---|---------------------------------------|---|----------------------------|--------------------|--|------------------------|------------------------|--|
| <b>REVISED</b><br>EC NO: J2008-2811<br>DRW: RYUKATA 2008/01/24<br>CHK: H. MATSUMOTO 2008/04/24<br>APPR: NUKITA 2008/04/25 | GENERAL TOLERANCES (UNLESS SPECIFIED) |   | DIMENSION STYLE<br>MM ONLY |                    | SCALE<br>---   | DESIGN UNITS<br>METRIC | THIRD ANGLE PROJECTION |  |
|   | 10 UNDER                              | ±0.2  | DRAWN BY<br>NYOSHIDA       | DATE<br>2004/07/30 | TITLE<br>1.0 WIRE TO BOARD CONN.<br>1-ROW RECEPTACLE HOUSING<br>6-15CKT.                                 |                        |                        |  |
|   | 10 OVER 30 UNDER                      | ±0.25   | CHECKED BY<br>MYAGI        | DATE<br>2004/07/30 |  |                        |                        |  |
|   | 30 OVER                               | ±0.3  | APPROVED BY<br>MIYAZAWA    | DATE<br>2004/07/30 |  MOLEX INCORPORATED |                        |                        |  |
|   | ANGULAR ±--- °                        |   | MATERIAL NO.<br>SEE TABLE  |                    |  |                        |                        |  |
| DRAFT WHERE APPLICABLE MUST REMAIN WITHIN DIMENSIONS  |                                       | THIS DRAWING CONTAINS INFORMATION THAT IS PROPRIETARY TO MOLEX INCORPORATED AND SHOULD NOT BE USED WITHOUT WRITTEN PERMISSION |                            |                    |  |                        |                        |  |