

**PLEASE CHECK WWW.MOLEX.COM FOR LATEST PART INFORMATION**

**Part Number:** [0350211301](#)  
**Status:** **Active**  
**Description:** 2.00/2.50mm (.079/.098") Board-In Terminal, Right Angle , Phosphor Bronze, Pre-Plated

**Documents:**

[3D Model](#) [Product Specification PS-35044-001 \(PDF\)](#)  
[Drawing \(PDF\)](#) [RoHS Certificate of Compliance \(PDF\)](#)

**General**

Product Family Crimp Terminals  
 Series [35021](#)  
 Crimp Quality Equipment Yes  
 Product Name Board-In

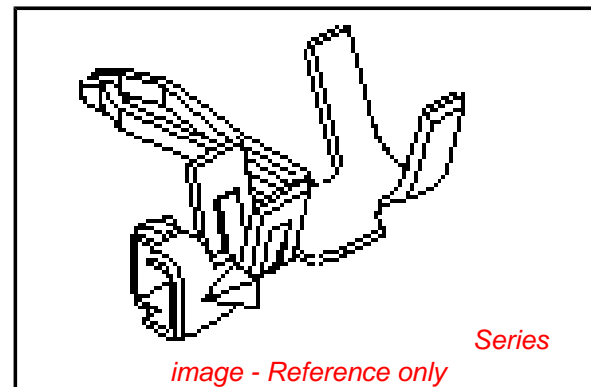
**Physical**

Gender Male  
 Material - Metal Phosphor Bronze  
 Material - Plating Mating Tin  
 Material - Plating Termination Tin  
 Packaging Type Reel  
 Plating min: Mating (µin) 32.00  
 Plating min: Mating (µm) 0.800  
 Plating min: Termination (µin) 32.00  
 Plating min: Termination (µm) 0.80  
 Termination Interface: Style Crimp or Compression  
 Wire Insulation Diameter 1.50mm (.059") max.  
 Wire Size AWG 24, 26, 28, 30  
 Wire Size mm<sup>2</sup> N/A

**Material Info**

**Reference - Drawing Numbers**

Product Specification PS-35044-001  
 Sales Drawing SD-35021-001, SD-35021-1\*\*\*



**EU RoHS**

**ELV and RoHS  
 Compliant**  
**REACH SVHC  
 Contains SVHC: No**  
**Halogen-Free  
 Status**

**China RoHS**



**Need more information on product  
 environmental compliance?**

Email [productcompliance@molex.com](mailto:productcompliance@molex.com)  
 For a multiple part number RoHS Certificate of Compliance, [click here](#)

Please visit the [Contact Us](#) section for any non-product compliance questions.

**Search Parts in this Series**

[35021Series](#)

**Use With**

[35023](#)

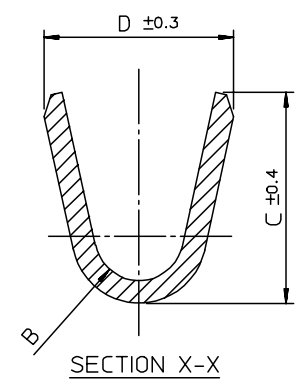
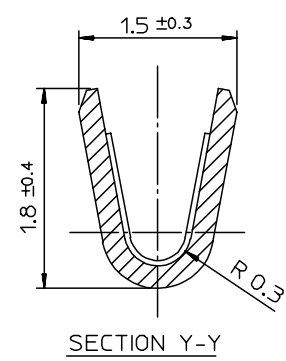
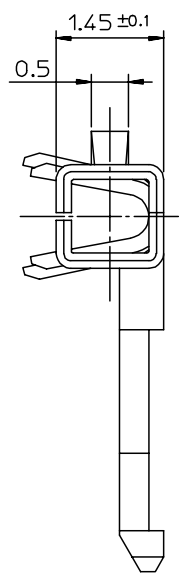
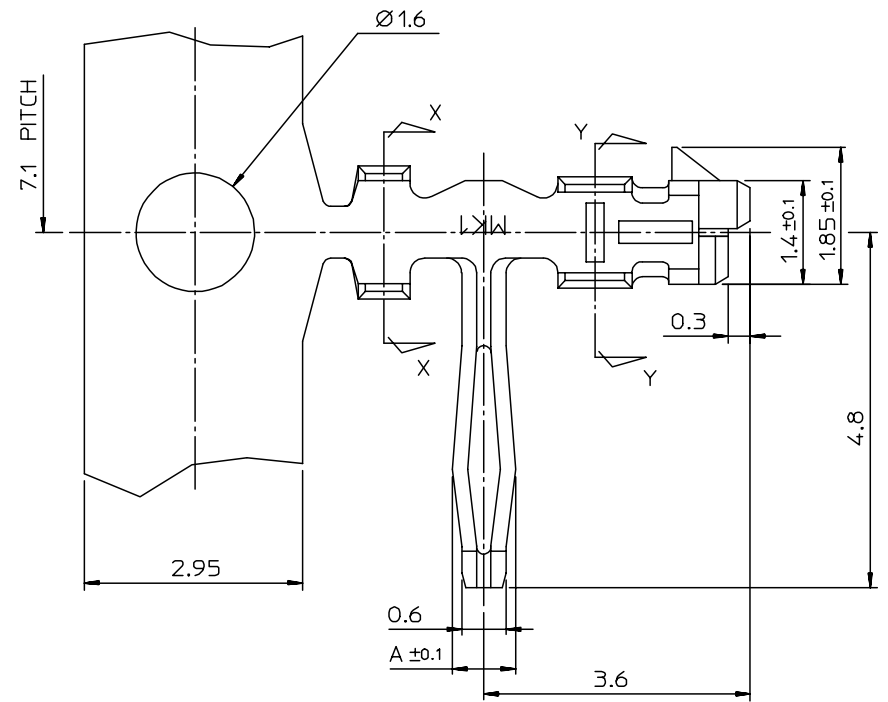
**Application Tooling | FAQ**

*Tooling specifications and manuals are found by selecting the products below. Crimp Height Specifications are then contained in the Application Tooling Specification document.*

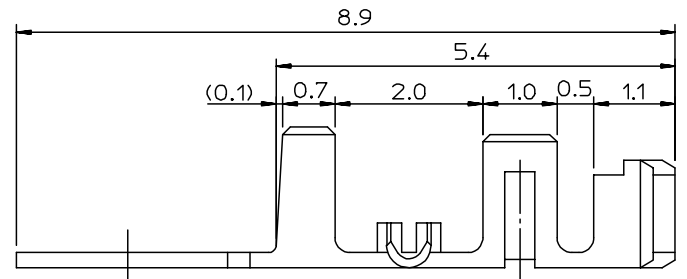
**Global**

Description	Product #
HAND CRIMP TOOL	<a href="#">0638116900</a>
T2 Terminator Die	<a href="#">0638532000</a>
FineAdjust™ Applicator	<a href="#">0638632000</a>

DWG. NO. SD-35021-001  
 SIMILAR ITEM  
 PROJECT NO.  
 DO NOT SCALE DRAWING DIMENSION IN METRIC



- NOTE
- MATERIAL
    - BRASS (CDA 260)
    - PHOSPHOR BRONZE (CDA 510)
  - PLATING
    - PRE PLATED - TIN OVER COPPER
    - POST PLATED - TIN/LEAD OVER COPPER
  - USED HOUSING : 35022-00\*\*/35023-00\*\*/68418-\*\*\*00



POST-PLATED	PHOS. BRON.	AWG #24-#30	1.8	1.9	R0.4	0.85	350211310	35021-1310
PRE-PLATED	PHOS. BRON.	(INS. DIA: Ø 1.5 MAX.)	2.5	2.5	R0.7	1.05	350211301	35021-1301
	BRASS						350211201	35021-1201
PRE-PLATED	PHOS. BRON.	AWG #22-#28 (INS. DIA: Ø 1.9 MAX.)	2.5	2.5	R0.7	1.05	350211101	35021-1101
	BRASS						350211001	35021-1001
POST-PLATED	PHOS. BRON.						350211110	35021-1110
PLATING	MATERIAL	WIRE RANGE	D	C	B	A	MAT'L NO.	ENG NO.

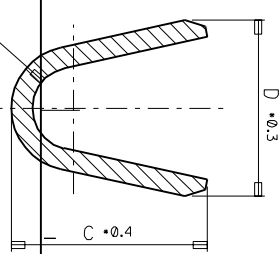
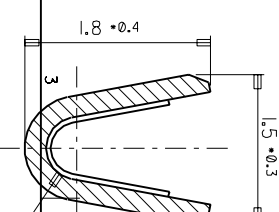
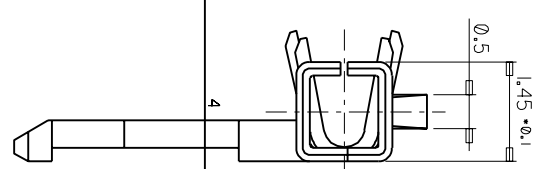
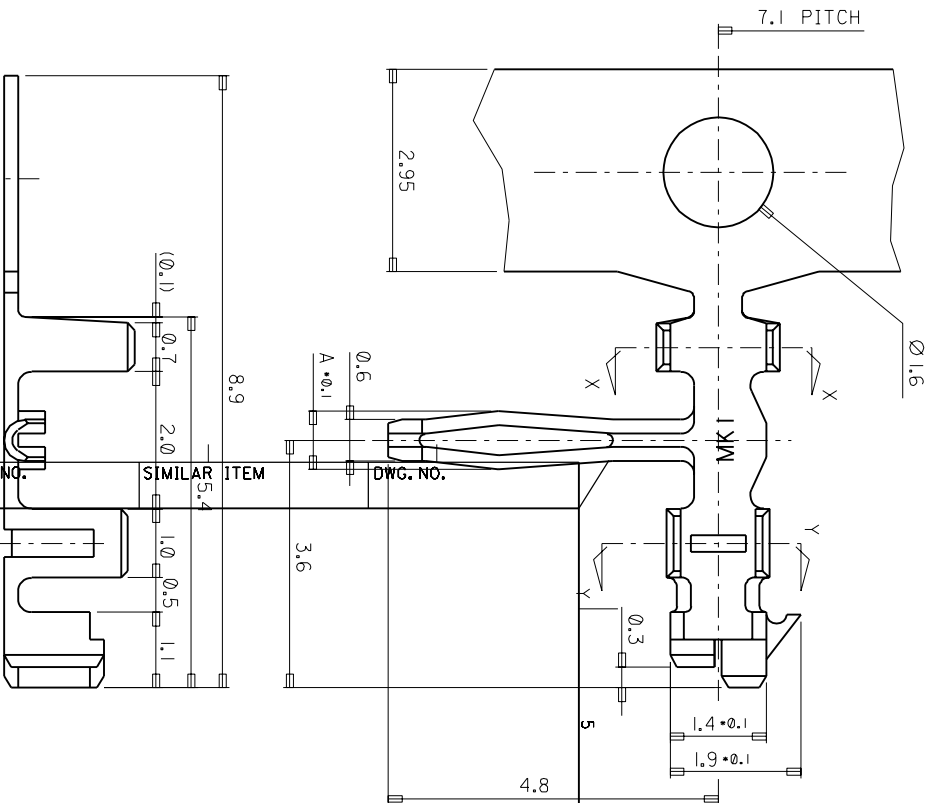
REVISED EC NO: KOR2007-0027 DRWN: JHLEE 06/09/13 CHK: KSKIM 06/09/13 APPR: YSOOKIM 06/09/13	QUALITY SYMBOLS MAJOR CRITICAL	GENERAL TOLERANCES: (UNLESS SPECIFIED)		SCALE 15-1 <input checked="" type="checkbox"/> mm <input type="checkbox"/> INCH	DESIGN UNITS <input checked="" type="checkbox"/> mm <input type="checkbox"/> INCH	THIRD ANGLE PROJECTION <input checked="" type="checkbox"/> THIRD ANGLE <input type="checkbox"/> FIRST ANGLE	DIMENSIONS: <input type="checkbox"/> mm <input type="checkbox"/> INCH <input checked="" type="checkbox"/> mm ONLY		SHT   REV REVISE ON CAD ONLY
		DESCRIPTION R/A B-IN TERMINAL	DRAWN BY & DATE HSSHIN	TITLE: <b>R/A B-IN TERMINAL</b>					
REV 1	DESCRIPTION R/A B-IN TERMINAL	4 PLACES ±0.    ±.	3 PLACES ±0.    ±.	2 PLACES ±0.    ±.	1 PLACE ±0.3    ±.	APPROVED BY & DATE CWLEE	MOLEX INCORPORATED		SHEET NO. 10F1
		ANGULAR: ± 1 °		DRAFT WHERE APPLICABLE MUST REMAIN WITHIN DIMENSIONS		CAD FILENAME SD35021.DGN	MATERIAL NO. SEE TABLE	DRAWING NO. SD-35021-001	SIZE B

THIS DRAWING CONTAINS INFORMATION THAT IS PROPRIETARY TO MOLEX INCORPORATED AND SHOULD NOT BE USED WITHOUT WRITTEN PERMISSION.

MX-A3

PROJECT NO. SIMILAR ITEM DWG. NO.  
35021-1\*\*\* SD 35021-1\*\*\*

DO NOT SCALE DRAWING  
DIMENSION IN METRIC



NOTE

1. MATERIAL
  - 1) BRASS (CDA 260)
  - 2) PHOSPHOR BRONZE (CDA 510)
2. PLATING
  - 1) PRE PLATED - TIN OVER COPPER
  - 2) POST PLATED - TIN/LEAD OVER COPPER
3. USED HOUSING : 35022-00\*\* / 35023-00\*\*

POST-PLATED	PHOS. BRON.	AWG #24-#30	1.8	1.9	R0.4	0.85	35021-1310
PRE-PLATED	PHOS. BRON.	(INS. DIA: Ø 1.5 MAX.)	1.8	1.9	R0.4	0.85	35021-1301
POST-PLATED	PHOS. BRON.	AWG #22-#30 (INS. DIA: Ø 1.9 MAX.)	2.5	2.5	R0.7	1.05	35021-1101
PLATING	MATERIAL	WIRE RANGE	D	C	B	A	ENG. NO.
							35021-1110

REVISED  
EC NO. KOR1998-0091  
DRWN: HSSHIN(980609)  
CHK: JKOH  
APPR: CWLEE

REVISIONS  
REV DESCRIPTION  
C CRITICAL

QUALITY SYMBOLS	GENERAL TOLERANCES: (UNLESS SPECIFIED)	SCALE	DESIGN UNITS	THIRD ANGLE PROJECTION	TITLE
MAJOR	± 0.1	15-1	MM	<input checked="" type="checkbox"/>	R/A B-IN TERMINAL
MINOR	± 0.05		MM	<input type="checkbox"/>	
	± 0.02		MM	<input type="checkbox"/>	
	± 0.01		MM	<input type="checkbox"/>	
	± 0.005		MM	<input type="checkbox"/>	
	± 0.002		MM	<input type="checkbox"/>	
	± 0.001		MM	<input type="checkbox"/>	

DRAWN BY & DATE: HSSHIN  
CHECKED BY & DATE: JKOH  
APPROVED BY & DATE: CWLEE

CAD FILENAME: SD35021.DGN  
MATERIAL NO.: 350-21-1\*\*\*  
DRAWING NO.: SD 35021-1\*\*\*  
SHEET NO.: 10F1  
SIZE: A

MOLEX INCORPORATED  
KOREA

8 7 6 5 4 3 2 1  
A B C D E F