

1SS404WS

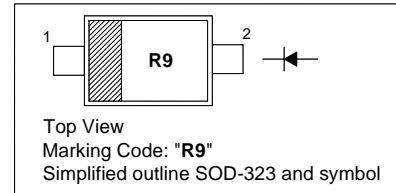
SILICON EPITAXIAL SCHOTTKY BARRIER DIODE

Applications

- High speed switching

PINNING

PIN	DESCRIPTION
1	Cathode
2	Anode

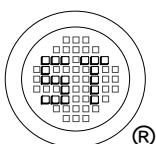


Absolute Maximum Ratings ($T_a = 25\text{ }^\circ\text{C}$)

Parameter	Symbol	Value	Unit
Maximum (Peak) Reverse Voltage	V_{RM}	25	V
Reverse Voltage	V_R	20	V
Average Forward Current	I_O	300	mA
Maximum (Peak) Forward Current	I_{FM}	700	mA
Power Dissipation	P_{tot}	200	mW
Junction Temperature	T_J	125	$^\circ\text{C}$
Storage Temperature Range	T_s	- 55 to + 125	$^\circ\text{C}$

Characteristics at $T_a = 25\text{ }^\circ\text{C}$

Parameter	Symbol	Typ.	Max.	Unit
Forward Voltage at $I_F = 300\text{ mA}$	V_F	-	0.45	V
Reverse Current at $V_R = 20\text{ V}$	I_R	-	50	μA
Total Capacitance at $f = 1\text{ MHz}$	C_T	46	-	pF

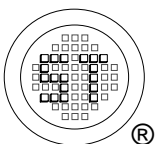
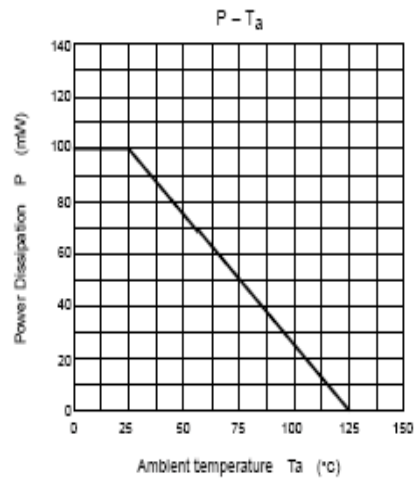
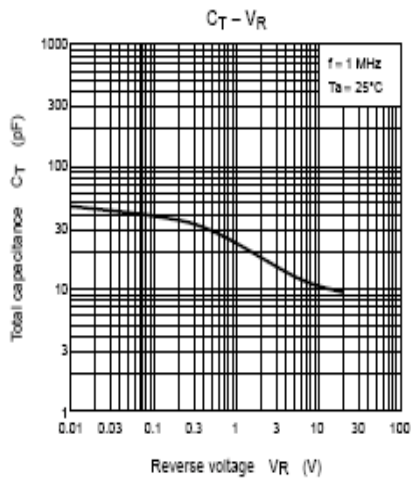
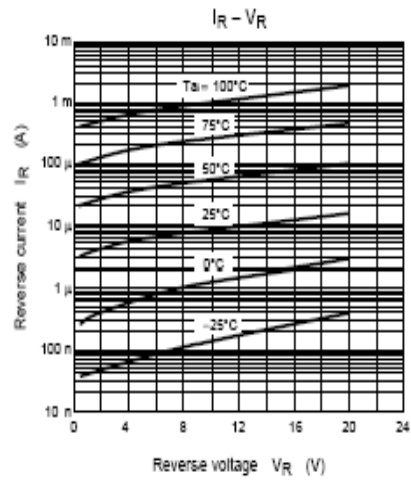
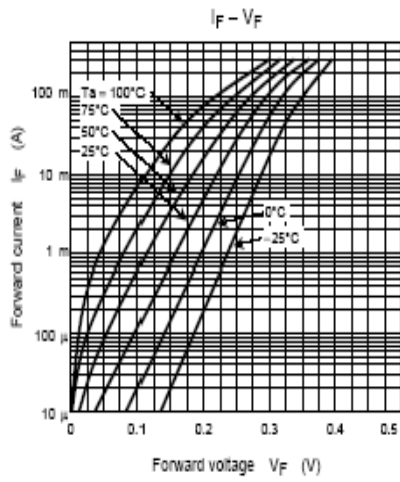


SEMTECH ELECTRONICS LTD.

(Subsidiary of Sino-Tech International Holdings Limited, a company
listed on the Hong Kong Stock Exchange, Stock Code: 724)



Dated : 01/09/2006



SEMTECH ELECTRONICS LTD.
 (Subsidiary of Sino-Tech International Holdings Limited, a company
 listed on the Hong Kong Stock Exchange, Stock Code: 724)



ISO/TS 16949 : 2002
 Certificate No. 05103



ISO 14001:2004
 Certificate No. 7116



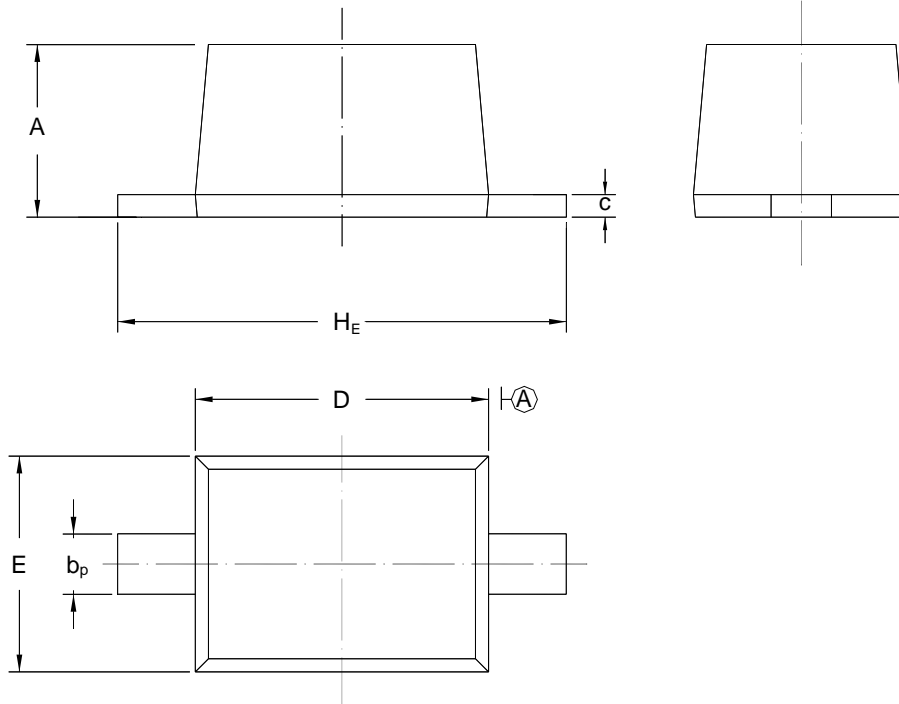
ISO 9001:2000
 Certificate No. 0506098

1SS404WS

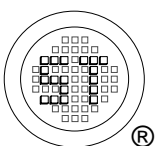
PACKAGE OUTLINE

Plastic surface mounted package; 2 leads

SOD-323



UNIT	A	b _p	C	D	E	H _E
mm	1.10 0.80	0.40 0.25	0.15 0.00	1.80 1.60	1.35 1.15	2.80 2.30



SEMTECH ELECTRONICS LTD.
 (Subsidiary of Sino-Tech International Holdings Limited, a company
 listed on the Hong Kong Stock Exchange, Stock Code: 724)



Dated : 01/09/2006