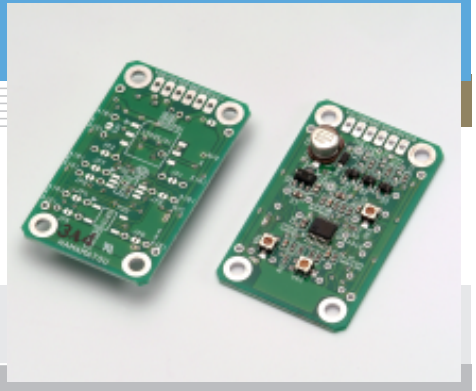


Color sensor evaluation circuit C9331

Color sensor evaluation circuit board



C9331 is an evaluation circuit board specifically designed for Hamamatsu color sensors. A 3-channel current-to-voltage conversion amplifier is mounted that converts each of RGB photocurrent into voltage signals for output.

Features

- 3 ch current-to-voltage conversion amplifier for color sensor evaluation
- Color sensors that mount on C9331:
S7505-01, S9032-02, S8751 (optional)

Applications

- Evaluation of Hamamatsu color sensor

■ Absolute maximum ratings (Ta=25 °C)

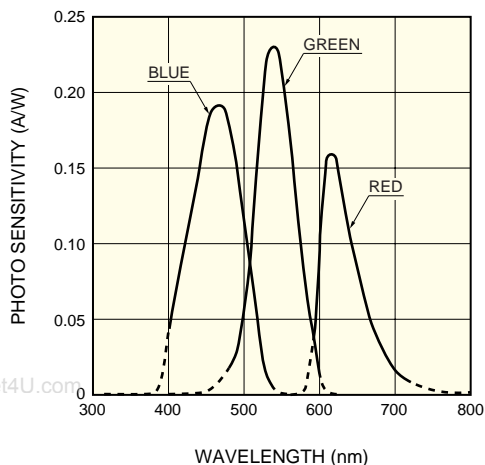
Parameter	Symbol	Value	Unit
Supply voltage	Vcc Max.	15	V
Operating temperature	Topr	+10 to +40	°C
Storage temperature	Tstg	-10 to +50	°C

■ Electrical and optical characteristics (Ta=25 °C, Vcc=9.0 V, common to each RGB channel)

Parameter	Symbol	Condition	Min.	Typ.	Max.	Unit
Operating supply voltage	Vcc		7	9	15	V
Output voltage	VOR, VOG, VOB	Zt=5.1 × 10 ⁵ V/A *	0.95	1.00	1.05	V
Saturation output voltage	Vsat	RL≥100 kΩ	4.6	-	5.35	V
Output offset voltage	Vos	Zt=5.1 × 10 ⁵ V/A Without photodiode	-	±40	±50	mV
Trans-impedance adjustment range	Zt		-	1 × 10 ⁵ to 5.1 × 10 ⁵	-	V/A
Input current range	Is	Zt=1 × 10 ⁵ V/A	-	0.5 to 48	-	μA
		Zt=5.1 × 10 ⁵ V/A	-	0.1 to 9.4	-	
Output impedance	Zo		-	510	-	Ω
Amplifier bandwidth	B	Without photodiode	-	DC to 14	-	kHz

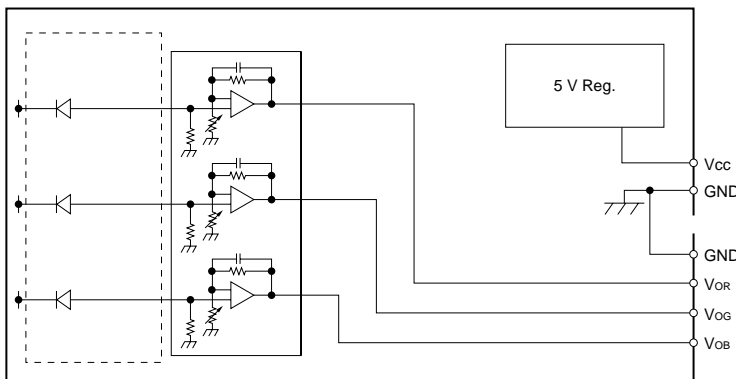
* Output obtained when reference current Iref=1.96 μA is injected between the photodiode connection terminals. Zt can be increased by rotating VR1 to VR3 clockwise.

■ Spectral response (S9032-02)



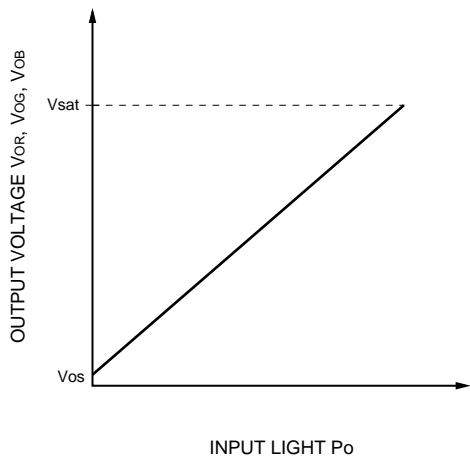
KSPDB0246EA

■ Block diagram



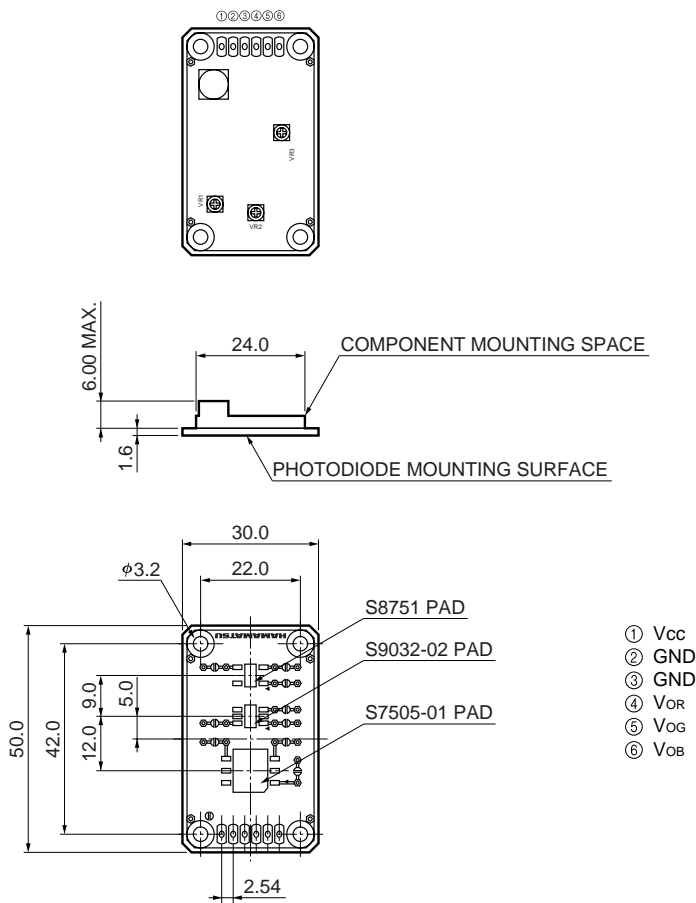
KACCC0201EA

■ Output voltage vs. input light (output example)



KACCC0200EA

■ Dimensional outline (unit: mm)



KACCA0128EA

HAMAMATSU

Information furnished by HAMAMATSU is believed to be reliable. However, no responsibility is assumed for possible inaccuracies or omissions. Specifications are subject to change without notice. No patent rights are granted to any of the circuits described herein. ©2003 Hamamatsu Photonics K.K.

HAMAMATSU PHOTONICS K.K., Solid State Division

1126-1 Ichino-cho, Higashi-ku, Hamamatsu City, 435-8558 Japan, Telephone: (81) 53-434-3311, Fax: (81) 53-434-5184, <http://www.hamamatsu.com>

U.S.A.: Hamamatsu Corporation: 360 Foothill Road, P.O.Box 6910, Bridgewater, N.J. 08807-0910, U.S.A., Telephone: (1) 908-231-0960, Fax: (1) 908-231-1218

Germany: Hamamatsu Photonics Deutschland GmbH: Arzbergerstr. 10, D-82211 Herrsching am Ammersee, Germany, Telephone: (49) 08152-3750, Fax: (49) 08152-2658

France: Hamamatsu Photonics France S.A.R.L.: 19, Rue du Saule Trépu, Parc du Moulin de Massy, 91882 Massy Cedex, France, Telephone: 33-(1) 69 53 71 00, Fax: 33-(1) 69 53 71 10

United Kingdom: Hamamatsu Photonics UK Limited: 2 Howard Court, Welwyn Garden City, Hertfordshire AL7 1BW, United Kingdom, Telephone: (44) 1707-294888, Fax: (44) 1707-325777

North Europe: Hamamatsu Photonics Norden AB: Smidesvägen 12, SE-171 41 Solna, Sweden, Telephone: (46) 8-509-031-00, Fax: (46) 8-509-031-01

Italy: Hamamatsu Photonics Italia S.R.L.: Strada della Moia, 1/E, 20020 Arese, (Milano), Italy, Telephone: (39) 02-935-81-733, Fax: (39) 02-935-81-741