

METAL HALIDE LAMP L6002

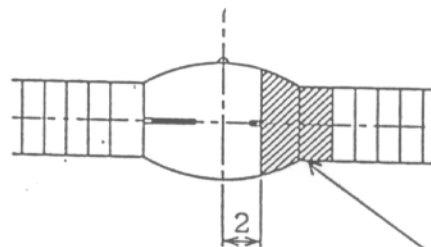
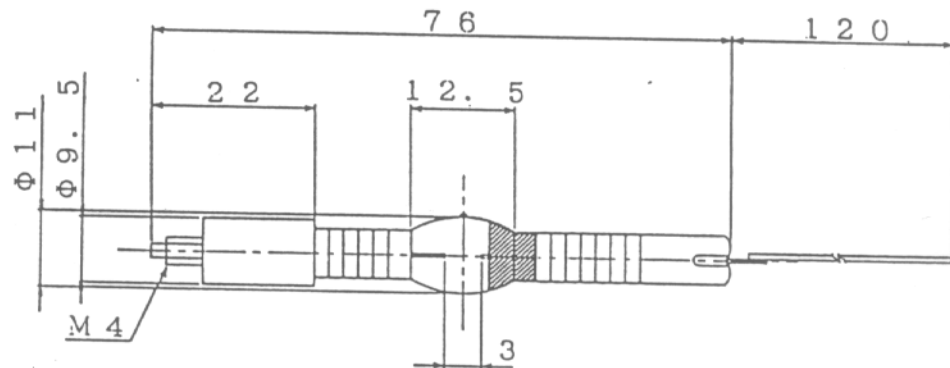
1994.6.8.

● SPECIFICATIONS

| | |
|---------------------|------------|
| Lamp Power | 150W |
| Lamp Voltage | 56Vac |
| Lamp Current | 2.7Aac |
| Luminous Flux | 10,500lm |
| Luminous Efficiency | 70lm/W |
| Color Temperature | 6,500K |
| Color Rendering | 75Min. |
| Average Life | 1,000Hours |

● DIMENSIONAL OUTLINE

| | |
|---------------|----------------|
| Total Length | 76mm |
| Arc Gap | 3mm |
| Terminal | M4Screw & Lead |
| Bulb Diameter | Φ 11mm |
| Bulb Length | 12.5mm |



Heat reflecting coating

(UNIT: mm)

SPECTRAL DISTRIBUTION

(METAL HALIDE LAMP TYPE NO L6002)

150W 3.0mm GAP

