

ADAPTERS, IN-SERIES

SMA

DC - 3 GHz
BULKHEAD MOUNT



MODELS: 5211-137

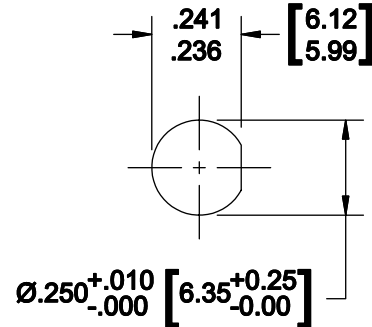
SPECIFICATIONS:

Electrical:

Frequency Range _____ DC - 3 GHz
 VSWR _____ 1.10:1 Max.
 Nominal Impedance _____ 50 Ohms
 Operating Temp Range _____ -55°C to +125°C

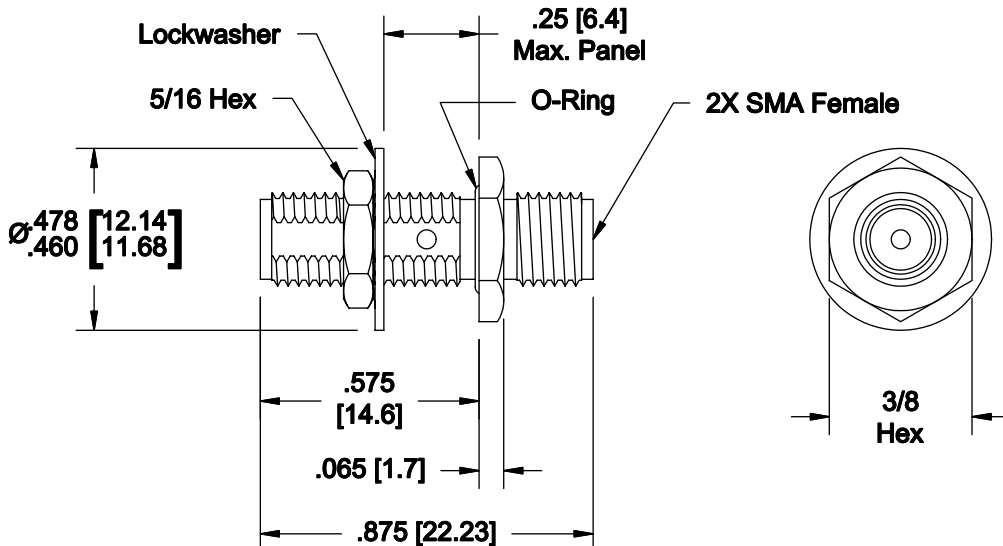
Mechanical:

Connectors _____ Passivated Stainless Steel
(Mates with MIL-STD-348)
 Conductors _____ Gold Plated Beryllium Copper
 Nut & Washer: _____ Passivated Stainless Steel
 O-Ring _____ Silicone Rubber



Recommended
Mounting Hole

Model Number: 5211-137



Note: Dimensions in Brackets are Expressed in Millimeters and are for Reference Only.

5211-137; REV A