

Features

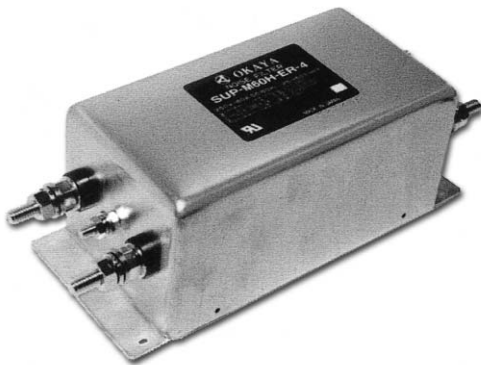
- Single phase filter.
- The adoption of super high μ core material ensures high attenuation.
- Leak current lower than 0.6mA (250V_{AC}, 60Hz).



Safety Agency : Standard	File No.
UL : UL-1283	E78644

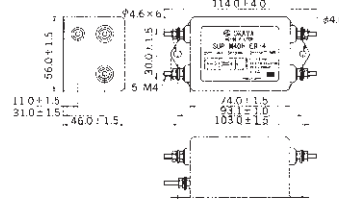
Applications

- PCs, Printers, UPS, Office appliances, Measuring devices, and Control systems.

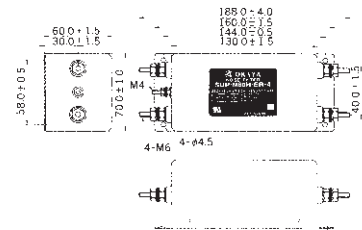


Dimensions

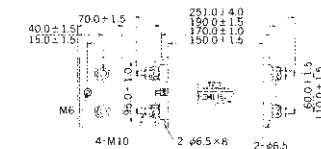
SUP-M40H-ER-4



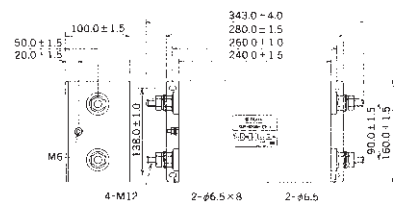
SUP-M60H-ER-4
SUP-M80H-ER-4



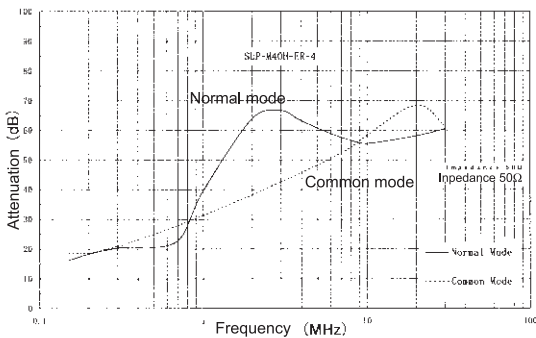
SUP-M100H-ER-4



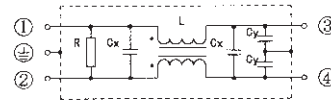
SUP-M200H-ER-4



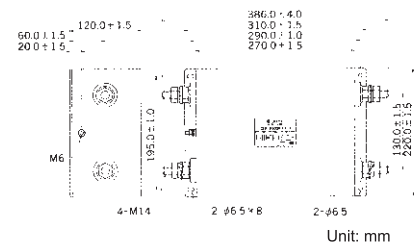
Static characteristics



Circuit



SUP-M300H-ER-4



Electrical Specifications

Rated Voltage **250VAC**

Safety Agency	Model Number	Rated Current (A)	Test Voltage	Insulation Resistance	Leakage Current (max)	Voltage Drop (max)	Temperature Rise (max)	Operating Temperature (°C)	Insertion losses			
									Normal Mode (MHz)	Common Mode (MHz)		
	SUP-M40H-ER-4	40	Line to Line 1000Vrms 50/60Hz 60sec Line to Ground 2000Vrms 50/60Hz 60sec	Line to Ground 6000MΩmin (at 500V _{DC})	0.6mA (at 250Vrms 60Hz)	Less than 1.0Vrms	35deg	-25 ~ +50	*1	1.0 ~ 30	*4	2.0 ~ 30
	SUP-M60H-ER-4	60							*2	0.6 ~ 30	*5	2.0 ~ 30
	SUP-M80H-ER-4	80							*2	0.6 ~ 30	*5	2.0 ~ 30
	SUP-M100H-ER-4	100							*3	0.4 ~ 30	*5	2.0 ~ 30
	SUP-M200H-ER-4	200							*3	0.4 ~ 30	*5	2.0 ~ 30
	SUP-M300H-ER-4	300							*3	0.4 ~ 30	*5	2.0 ~ 30

Guaranteed attenuation of *1 is 30dB, *2 is 35dB, *3 is 40dB, *4 is 25dB and *5 is more than 20dB.