

.100" x .100" Latch/Ejector Header

Right Angle, 4 Wall



- Military (with 3M's 3518 polarizing key) and center bump polarizations available
- Optional ejector latches
- Mounting holes for securing header to board
- Shrouded to protect against physical and chemical pin damage
- Solder tail and wrap tail options

TS-0160-10
Sheet 1 of 4

Physical

Insulation

Material: Glass Filled Polyester (PBT)
Flammability: UL 94V-0
Color: Gray

Contact

Material: Phosphor Bronze (C510)
Plating
Underplate: 100 μ " [2.54 μ m] Nickel — QQ-N-290, Class 2
Wiping Area: 30 μ " [0.76 μ m] Gold — MIL-G-45204, Type II, Grade C
Solder Tails: 200 μ " [5.08 μ m] 60/40 Tin Lead — MIL-P-81728
Wrap Tails: Gold Flash

Marking: 3M Logo, Part Identification Number and Orientation Triangle

Electrical

Current Rating: 1 A
Insulation Resistance: $>1 \times 10^9 \Omega$ at 500 Vdc
Withstanding Voltage: 1000 Vrms at Sea Level

Environmental

Temperature Rating: -55°C to $+105^\circ\text{C}$

UL File No.: E68080
CSA File No.: LR 40971

3M Electronic Products Division

6801 River Place Blvd.
Austin, TX 78726-9000

9005413 0000225 221

.100" x .100" Latch/Ejector Header

Right Angle, 4 Wall

Sheet 2 of 4

Pln Qty	3M Part Number	Dimensions						Polarization Notches Provided
		A	B	C	D		H	
10	3446-50XX	1.26 [32.0]	.71 [18.0]	.865 [21.97]	2.00	[50.8]	1.14	[29.0]
	2.18				[55.4]	1.32	[33.5]	
	2.10				[53.3]	1.24	[31.5]	
10	3662-50XX	1.26 [32.0]	.71 [18.0]	.865 [21.97]	2.00	[50.8]	1.14	[29.0]
	2.18				[55.4]	1.32	[33.5]	
	2.10				[53.3]	1.24	[31.5]	
14	3314-50XX	1.46 [37.1]	.91 [23.1]	1.065 [27.05]	2.20	[55.9]	1.14	[29.0]
	2.38				[60.5]	1.32	[33.5]	
	2.30				[58.4]	1.24	[31.5]	
16	3408-50XX	1.56 [39.6]	1.01 [25.7]	1.165 [29.59]	2.30	[58.4]	1.14	[29.0]
	2.48				[63.0]	1.32	[33.5]	
	2.49				[61.0]	1.24	[31.5]	
20	3428-50XX	1.76 [44.7]	1.21 [30.7]	1.365 [34.67]	2.50	[63.5]	1.14	[29.0]
	2.68				[68.1]	1.32	[33.5]	
	2.60				[66.0]	1.24	[31.5]	
24	3627-50XX	1.96 [49.8]	1.41 [35.8]	1.565 [39.75]	2.50	[63.5]	1.14	[29.0]
	2.68				[68.1]	1.32	[33.5]	
	2.60				[66.0]	1.24	[31.5]	
26	3429-50XX	2.06 [52.3]	1.51 [38.4]	1.665 [42.29]	2.80	[71.1]	1.14	[29.0]
	2.98				[75.7]	1.32	[33.5]	
	2.90				[73.7]	1.24	[31.5]	
30	3440-50XX	2.26 [57.4]	1.71 [43.4]	1.865 [47.37]	3.00	[76.2]	1.14	[29.0]
	3.18				[80.8]	1.32	[33.5]	
	3.10				[78.7]	1.24	[31.5]	
34	3431-50XX	2.46 [62.5]	1.91 [48.5]	2.065 [52.45]	3.20	[81.3]	1.14	[29.0]
	3.38				[85.9]	1.32	[33.5]	
	3.30				[83.8]	1.24	[31.5]	
40	3432-50XX	2.76 [70.1]	2.21 [56.1]	2.365 [60.07]	3.50	[88.9]	1.14	[29.0]
	3.68				[93.5]	1.32	[33.5]	
	3.60				[91.4]	1.24	[31.5]	
50	3433-50XX	3.26 [82.8]	2.71 [68.8]	2.865 [72.77]	4.00	[101.6]	1.14	[29.0]
	4.18				[106.2]	1.32	[33.5]	
	4.10				[104.1]	1.24	[31.5]	
60	3372-50XX	3.76 [95.5]	3.21 [81.5]	3.365 [85.47]	4.50	[114.3]	1.14	[29.0]
	4.68				[118.9]	1.32	[33.5]	
	4.60				[116.8]	1.24	[31.5]	
64	3764-50XX	3.96 [100.7]	3.41 [86.6]	3.565 [90.55]	4.70	[119.4]	1.14	[29.0]
	4.88				[124.0]	1.32	[33.5]	
	4.80				[121.9]	1.24	[31.5]	

3M Part No. Suffix	Contact Tail	Dim E	Dim F			Dim G
-5XX2	Solder Tail for .062 [1.57] Thick PC Board	.112 [2.84]	.0245 ± .0005 [0.622]	with .028 ± .001 [0.71]	Diagonals	.035 ± .003 [0.89] (Note 3)
-5X03	Solder Tail for .094 to .125 [2.39 to 3.18] Thick PC Board	.155 [3.94]	.0245 ± .0005 [0.622]	with .028 ± .001 [0.71]	Diagonals	.035 ± .003 [0.89]
-5X05	Wire Wrap Tail for up to 3 Levels of Wire Wrap	.61 [15.5] Ref		.025 ± .002 [0.64]		.045 ± .003 [1.14]

Notes:

- Notches A & C will accommodate 3M Polarizing Keys (3M Part Number 3518 or M3518).
- Accepts rear and front entry: mounting hardware: #4-24 thread cutting screw, 3M Part #3341-5 (.116 [2.95] dia mounting hole). Front Entry (prior to installation of Latch): #2-56 bolt and nut. 3M Part #3341-6 (.106 [2.69] dia mounting hole).
- The recommended PCB hole size for the kinked tail positions on the .112" solder tail connector is .035" ± .002.

Inch
[mm]

Tolerance Unless Noted			
	.0	.00	.000
Inch	± .1	± .01	± .005

[] Dimensions for Reference Only

Ordering Information

XXXX-5XXX

3M Part Number

Ejector/Latch System
 0 = No Ejector/Latch
 2 = Short Ejector/Latch (when non-strain relief socket is used.)
 3 = Long Ejector/Latch (when socket with strain relief is used.)
 4 = Ejector Only

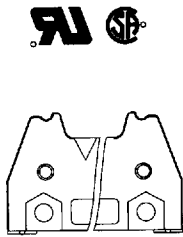
Tail

02 = Solder Tails for .062 [1.57] Thick Board.
 K2 = Kinked Solder Tails for .062 [1.57] Thick Board.
 03 = Solder Tails for .094 to .125 [2.39 to 3.18] Thick Board.
 05 = Wrap Tails for up to 3 Levels of Wire Wrap.

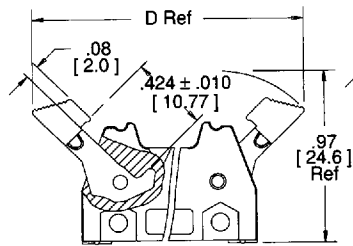
.100" x .100" Latch/Ejector Header

Right Angle, 4 Wall

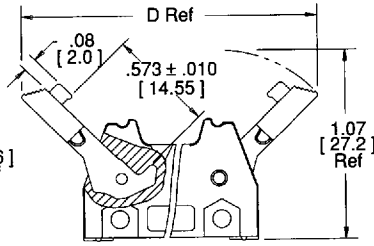
-50XX
Header With
No Ejector/Latch



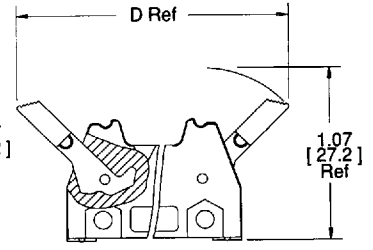
-52XX
Header With
Short Ejector/Latch
(3M Part No. 3505-2)
for 3M Sockets Without
Strain Relief



-53XX
Header With
Long Ejector/Latch
(3M Part No. 3505-3)
for 3M Sockets With
Strain Relief

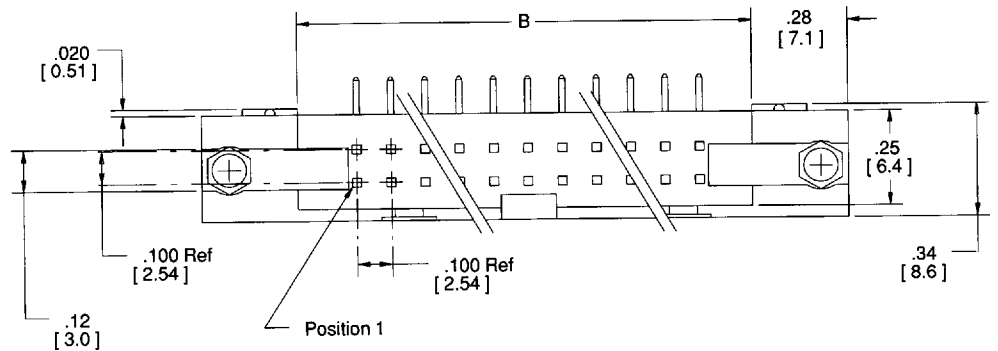


-54XX
Header With
Ejector Only
(3M Part No. 3505-4)

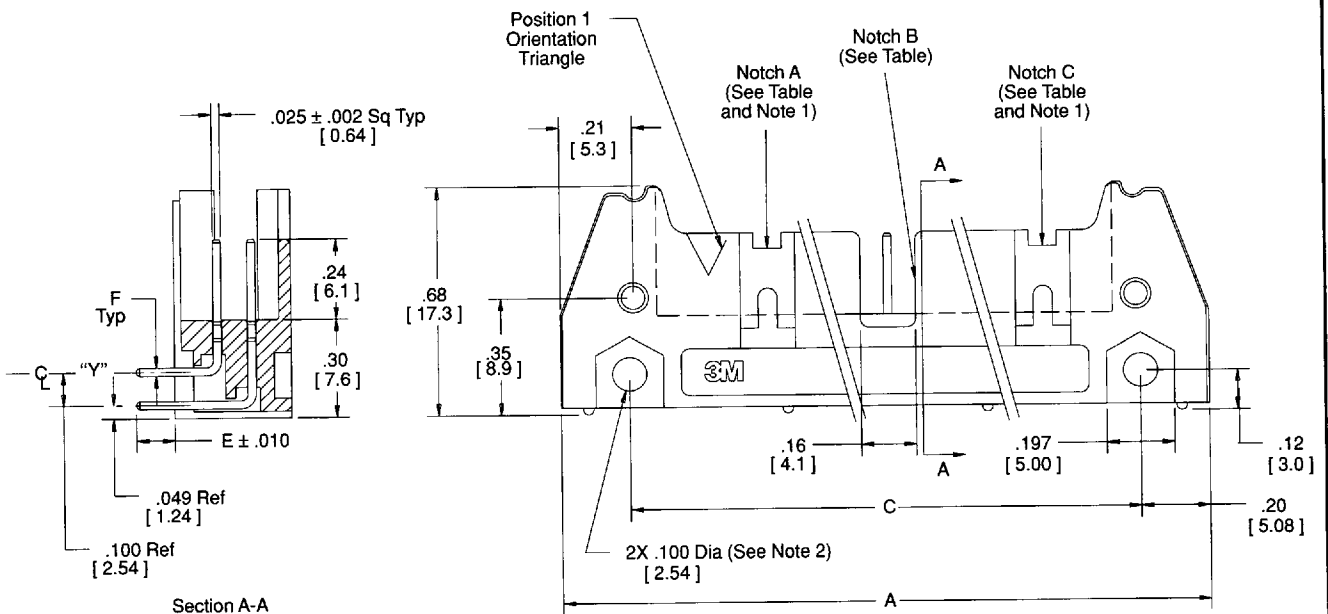


Note - This Ejector
is a Nickel Plated
Zinc Alloy Casting.

Sheet 3 of 4



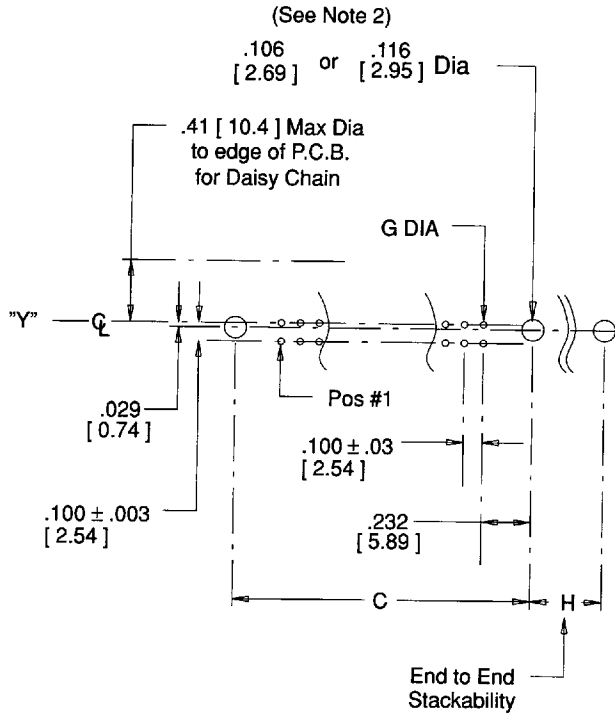
TS-0160-10



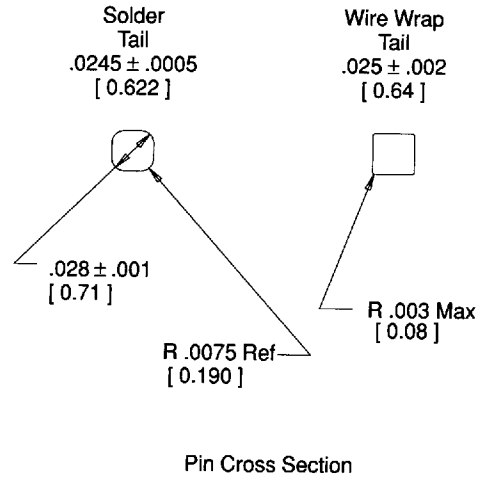
.100" x .100" Latch/Ejector Header

Right Angle, 4 Wall

Sheet 4 of 4



Recommended Mounting Hold Pattern



TS-0160-10