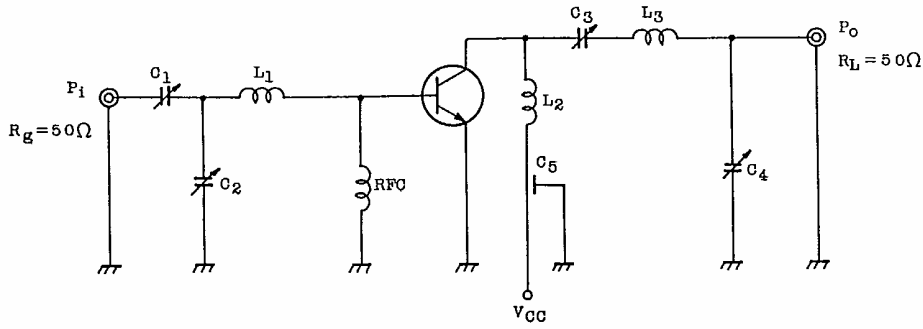


2SC2118

Fig. P_o TEST CIRCUIT



- C₁, C₂, C₃, C₄ : ~30pF
- C₅ : 1000pF FEED THROUGH
- L₁, L₂ : φ1.2 SILVER PLATED COPPER WIRE, 8ID, 1T
- L₃ : φ1.2 SILVER PLATED COPPER WIRE, 8ID, 7/4T
- RFC : 1μH CHOKE COIL

