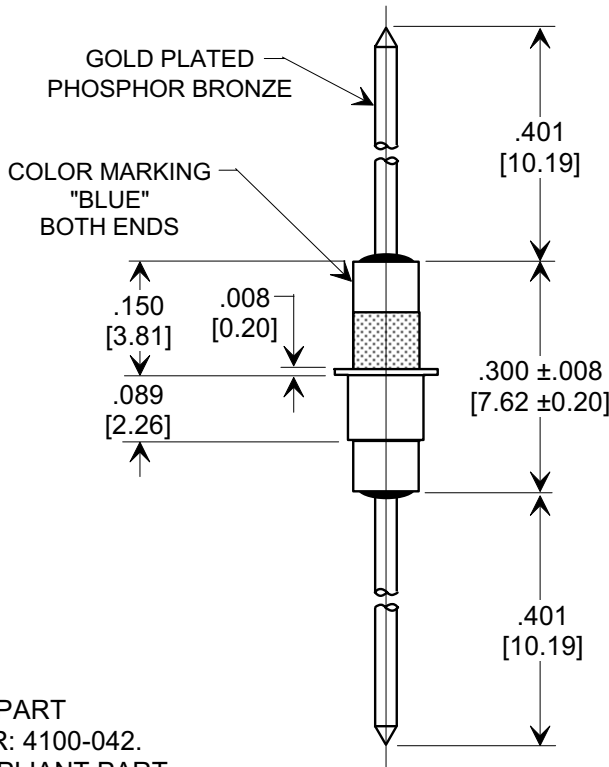
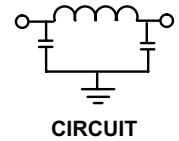
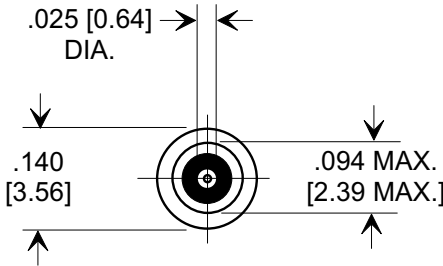
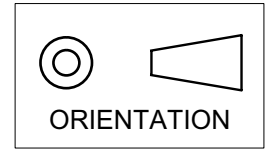


# MARKETING SALES DRAWING

**DIMENSIONS IN INCHES - DO NOT SCALE THIS DRAWING**  
**DIMENSIONS IN METRIC - [ ]**

Electrical Testing  
 per Tusonix standard  
 test plans and Mil-Std-202  
 Test Methods.



**NOTES:**

- TUSONIX STANDARD PART  
 NUMBER: 4100-042.  
 TUSONIX RoHS COMPLIANT PART  
 NUMBER: 4100-042 LF.  
 CUSTOMER MUST SPECIFY STANDARD OR  
 RoHS PART NUMBER WHEN ORDERING.
- EYELET FINISH: STANDARD PART #: 60/40 SOLDER PLATED.  
 RoHS PART #: SILVER PLATED.
- PART MARKING: STANDARD, NO MARKING.  
 RoHS PART: GREEN DOT ON INSULATION BAND,  
 TYPICAL LOCATION.

CAP.(pf)	WORKING VOLTAGE (DC)		DC CURRENT	I.R. MIN. @ 100 (VDC.)	DWV (VDC)	MINIMUM NO LOAD INSERTION LOSS (dB) AT 25°C PER MIL-STD-220			
	85 °C	125 °C				10 MHz	100 MHz	1 GHz	10 GHz
1000 ±20%	50	50	10 A	10 G	600	3	20	55	55

X-2015 Rev-0	<b>REVISION RECORD</b>		<b>TUSONIX</b> TUCSON, ARIZONA	--TOLERANCES-- Unless Otherwise Specified		Title		
	Original Release C.O.	WAS SK 7495-000. SM 07-28-98		DECIMAL ± .031 [0.79]	<b>FILTER PIN</b>		Drawn <b>S.M. 05-28-98</b>	Scale <b>4 X</b>
	<b>19980716-1-03</b>	REMOVED RES PART # & ADDED CIRCUIT. SM 10-112-98		ANGLES ±				
	<b>19981006-7-01</b>	AFFED NOTES, DWV & IR. SM 06-07-05			<b>A</b>		<b>4100-042</b>	
<b>20050526-4-12</b>								