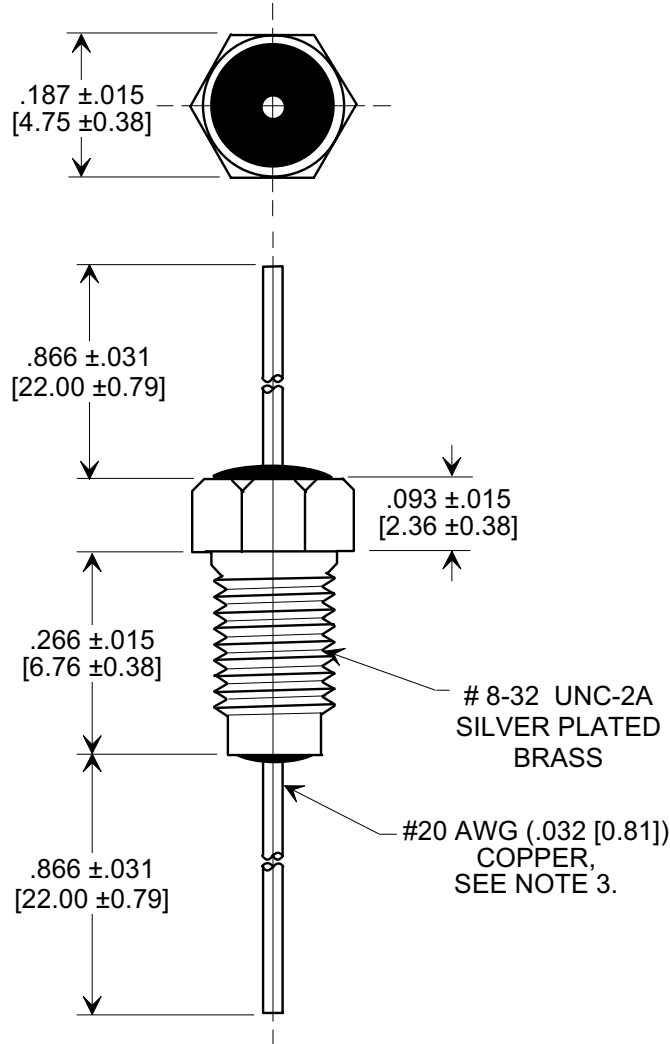
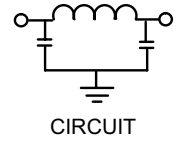
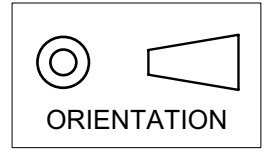


# MARKETING SALES DRAWING

DIMENSIONS IN INCHES - DO NOT SCALE THIS DRAWING  
 DIMENSIONS IN METRIC - [ ]

Electrical Testing  
 per Tusonix standard  
 test plans and Mil-Std-202  
 Test Methods.



**NOTES:**

- SUPPLIED WITH SILVER PLATED HEX NUT AND INTERNAL TOOTH LOCK WASHER.
- TUSONIX STANDARD PART NUMBER: 4201-085.  
 TUSONIX RoHS COMPLIANT PART NUMBER: 4201-085 LF.  
 CUSTOMER MUST SPECIFY STANDARD OR RoHS PART NUMBER WHEN ORDERING.
- LEAD FINISH: STANDARD PART #: 60/40 SOLDER PLATED. RoHS PART #: SILVER PLATED.
- PART MARKING: TRADEMARK AND VARIATION NUMBER ON HEX FLATS.  
 STANDARD PART: BLACK INK. RoHS PART: GREEN INK.

MIN. CAP. (pF)	WORKING VOLTAGE (VVdc)		CURRENT (Adc)	I.R. MIN. @ 100 (VDC.)	DWV (VDC)	MINIMUM NO LOAD INSERTION LOSS (dB) AT 25°C PER MIL-STD -220			
	85°C	125 °C				10 MHz	100 MHz	1 GHz	10 GHz
	5,500	200				100	10	10 G	400

X-2015 Rev-0	REVISION RECORD		<b>--TOLERANCES--</b> Unless Otherwise Specified  DECIMAL ±  ANGLES ±	Title <b>BUSHING MOUNT PI TYPE EMI FILTER</b>	
	Original Release C.O.	0		Drawn S.M. 04-04-00 Scale 4 X	
	WAS SK 7767-000. SM 07-14-00	2000710-1-04		Approved T.C. 04-04-00	
	ADDED NOTES, IR & DWV. S.M. 07-29-05	20050726-2-41		<b>TUSONIX</b> TUCSON, ARIZONA <b>A</b> <b>4201-085</b>	