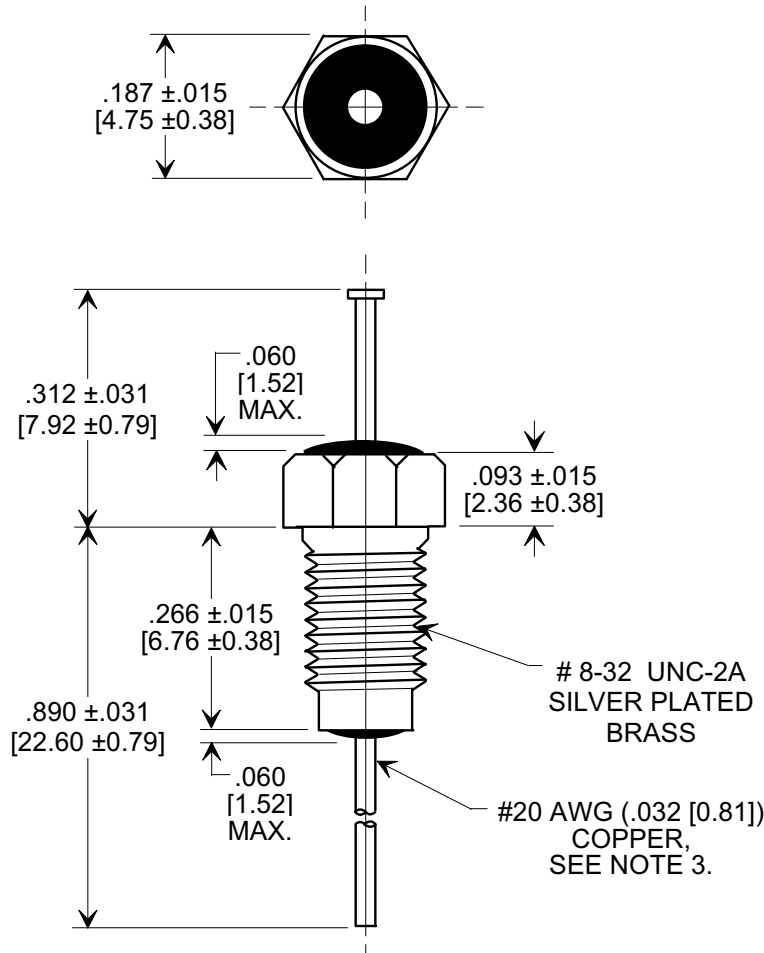
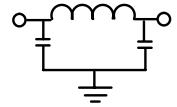
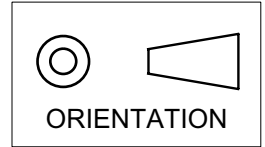


MARKETING SALES DRAWING

DIMENSIONS IN INCHES - DO NOT SCALE THIS DRAWING
DIMENSIONS IN METRIC - []

Electrical Testing
 per Tusonix standard
 test plans and Mil-Std-202
 Test Methods.



NOTES:

1. NO MOUNTING HARDWARE SUPPLIED.
2. TUSONIX STANDARD PART NUMBER: 4201-091.
 TUSONIX RoHS COMPLIANT PART NUMBER: 4201-091 LF.
 CUSTOMER MUST SPECIFY STANDARD OR RoHS PART NUMBER WHEN ORDERING.
3. LEAD FINISH: STANDARD PART #: 60/40 SOLDER PLATED. RoHS PART #: SILVER PLATED.
4. PART MARKING: TRADEMARK AND VARIATION NUMBER ON HEX FLATS.
 STANDARD PART: BLACK INK. RoHS PART: GREEN INK.

CAP. (pF)	WORKING VOLTAGE (WVdc)		CURRENT (Adc)	I.R. MIN. @ 100 (VDC.)	DWV (VAC)	MINIMUM NO LOAD INSERTION LOSS (dB) AT 25°C PER MIL-STD -220			
	85°C	125 °C				10 MHz	100 MHz	1 GHz	10 GHz
1000/ 1600	200	100	10	10 G	600, 1 SEC.	3	35	70	70

X-2015 Rev-0 REVISION RECORD Original Release C.O. WAS SK 8037-001 L.E. 01-08-03 20030106-3-03 ADDED NOTES, IR & DWV. S.M. 08-01-05 20050726-2-47	--TOLERANCES-- Unless Otherwise Specified		Title <h2 style="text-align: center;">EMI FILTER</h2>	
	DECIMAL ±	Drawn S.M. 11-27-01		Scale 4 X
	ANGLES ±	Approved T.C. 11-27-01		
	TUSONIX TUCSON, ARIZONA		A	4201-092