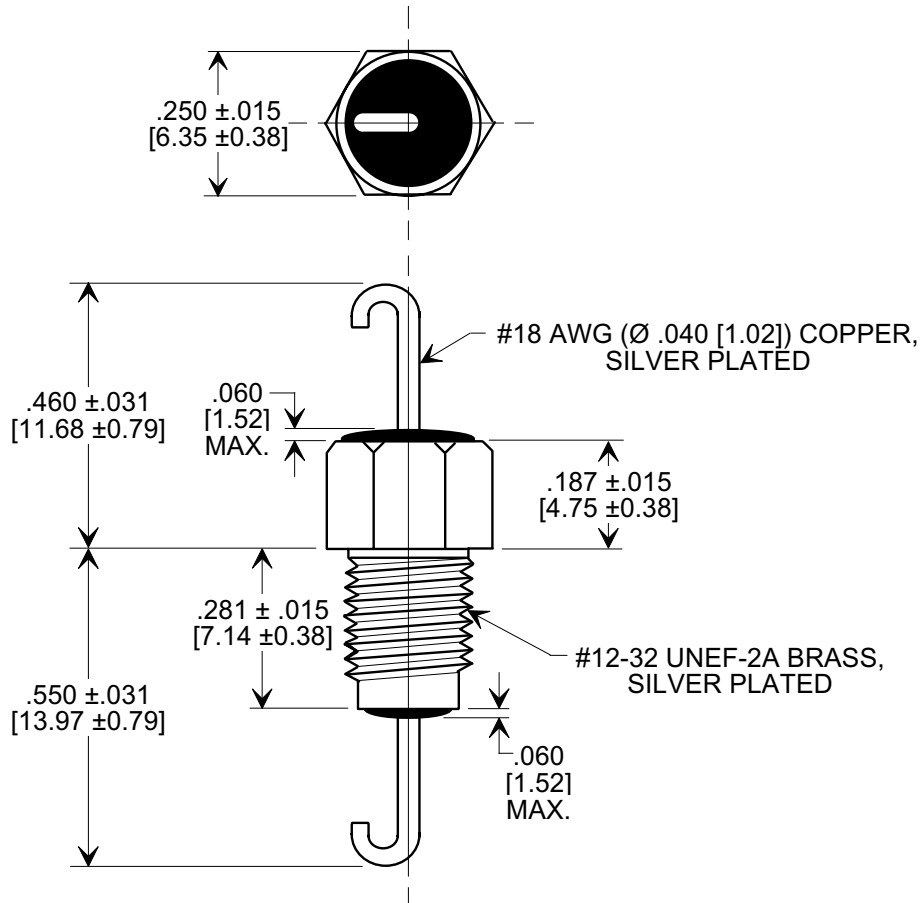
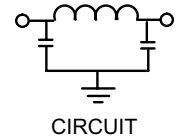
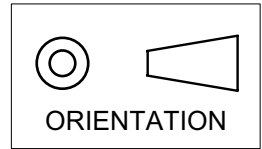


MARKETING SALES DRAWING

DIMENSIONS IN INCHES - DO NOT SCALE THIS DRAWING
DIMENSIONS IN METRIC - []

This drawing is the property of Tusonix, Inc., and may not be used, reproduced, published or disclosed to others without expressed authorization by Tusonix Inc.

Electrical Testing
per Tusonix standard
test plans and Mil-Std-202
Test Methods.



NOTES:

1. SUPPLIED WITH SILVER PLATED HEX NUT AND LOCK WASHER.
2. TUSONIX STANDARD PART NUMBER: 4202-031.
TUSONIX RoHS COMPLIANT PART NUMBER: 4202-031 LF.
CUSTOMER MUST SPECIFY STANDARD OR RoHS PART NUMBER WHEN ORDERING.
3. PART MARKING: TRADEMARK AND VARIATION NUMBER ON HEX FLATS.
STANDARD PART: BLACK INK. RoHS PART: GREEN INK.

MIN. CAP. (pF)	WORKING VOLTAGE (VVdc)		CURRENT (Idc)	DWV (VDC)	I.R. MIN. @ 100 VDC	MINIMUM NO LOAD INSERTION LOSS (dB) AT 25°C PER MIL-STD -220			
	85°C	125°C				10 MHz	100 MHz	1 GHz	10 GHz
2500	500	350	15 A	1200	10 G Ω	5	50	70	70

X-2015 Rev-0 REVISION RECORD Original Release C.O. 20060413-3-01	0	<div style="display: flex; justify-content: space-between;"> <div style="text-align: left;"> <p>--TOLERANCES-- Unless Otherwise Specified</p> <p>DECIMAL ± </p> <p>ANGLES ± </p> </div> <div style="text-align: right;"> <p>Title</p> <p style="font-size: 1.2em; font-weight: bold;">BUSHING STYLE EMI FILTER</p> </div> </div>		
	Drawn S.M. 04-13-06		Scale 3 X	
	Approved T.C. 04-13-06			
	TUSONIX TUCSON, ARIZONA		A	4202-031