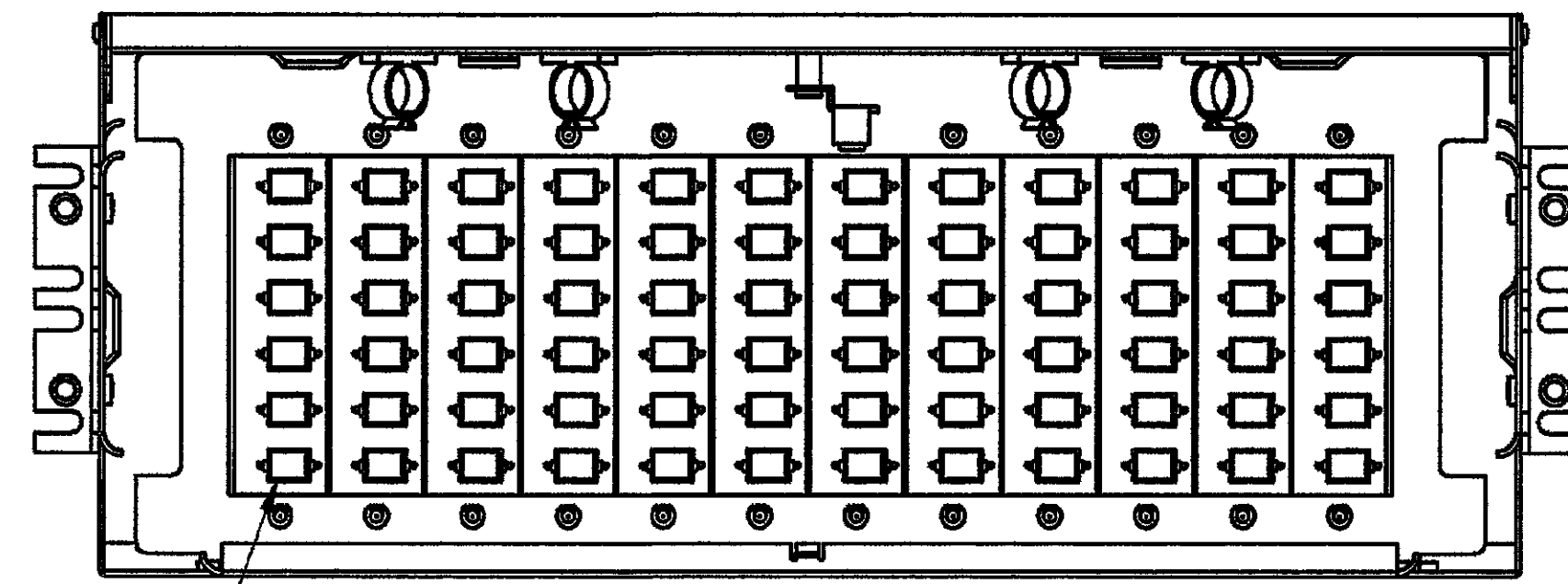


LOC		DIST		REVISIONS			
F	LTB	DESCRIPTION	DATE	BY	APPD		
1		RELEASE PER DR98092101	9-23-98	MM	HKB		
0		REVISED PER EC98101201	10-12-98	MM	HKB		

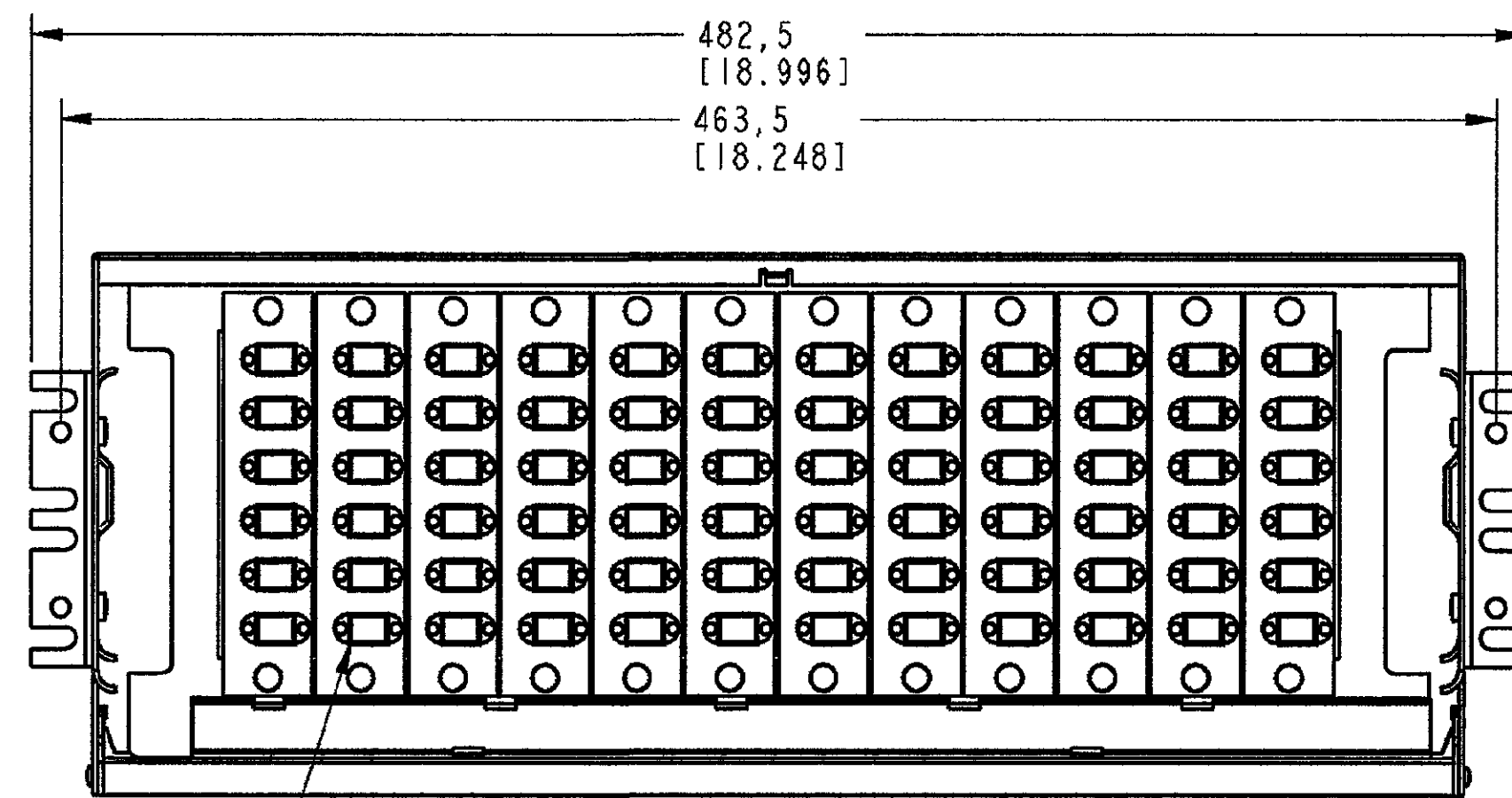
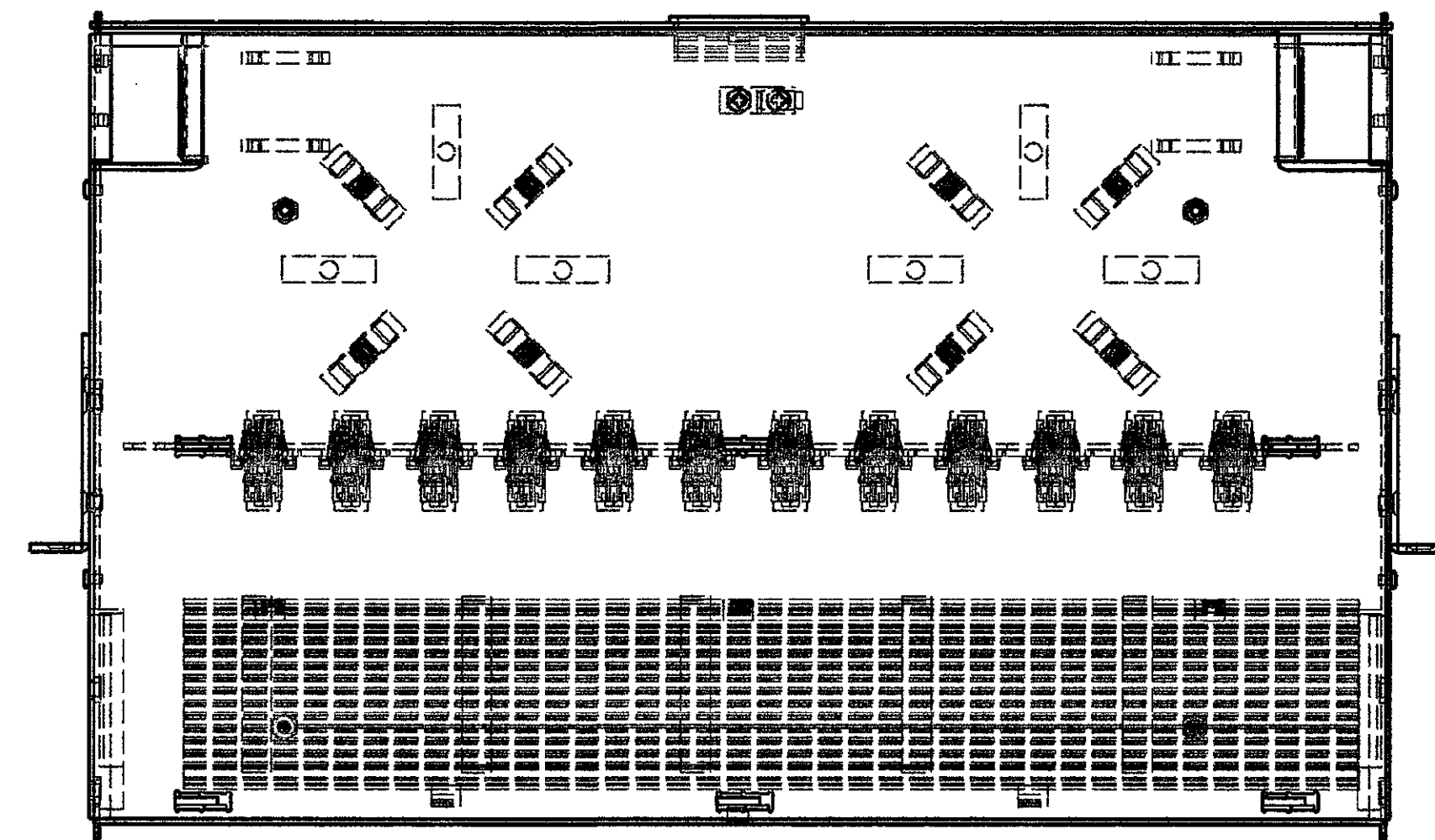
NOTES: UNLESS OTHERWISE SPECIFIED

1 EIGHT (8) SCREWS AND TWO (2) MOUNTING BRACKETS ARE PROVIDED IN BAG INSIDE THE ENCLOSURE



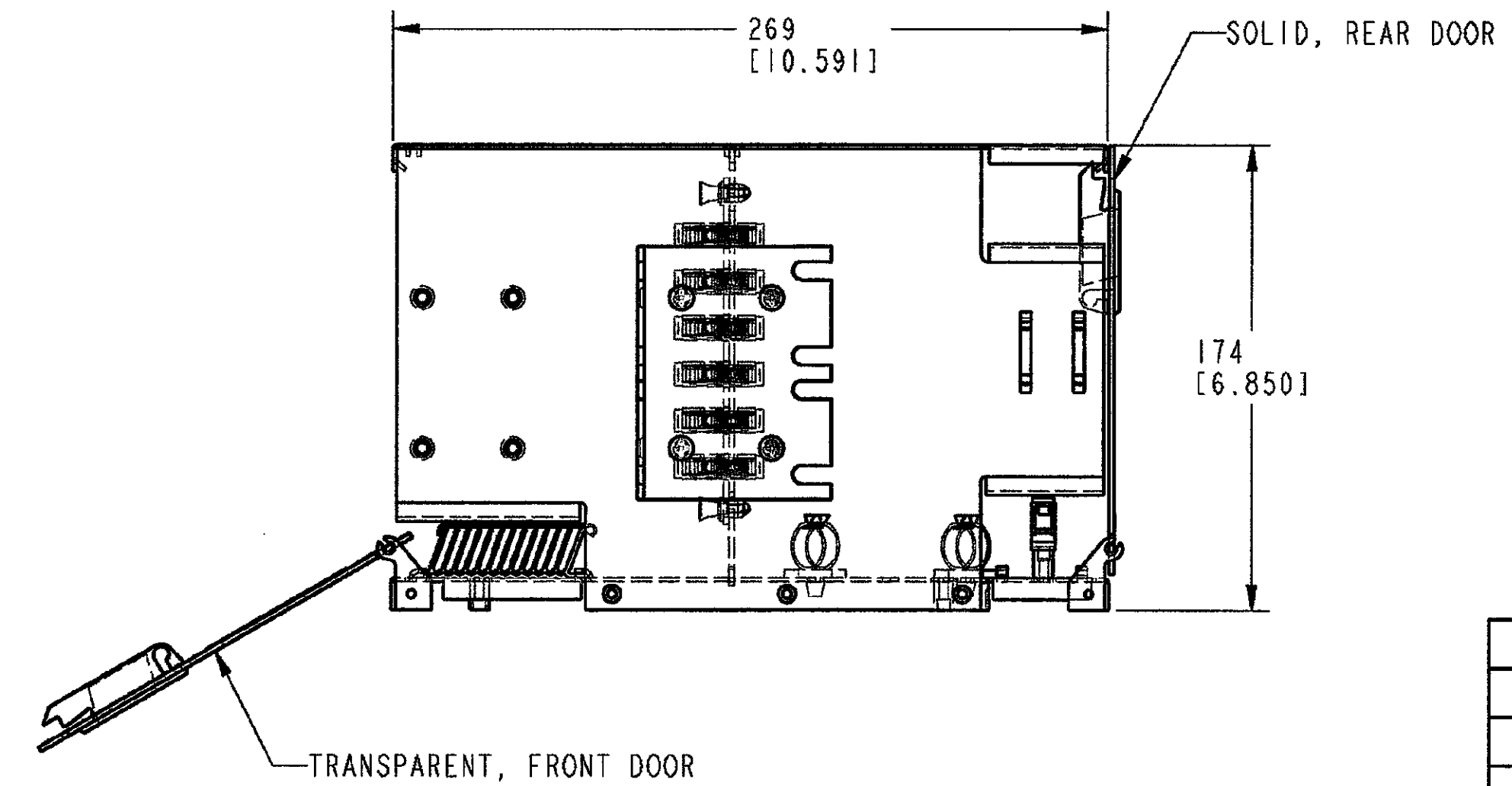
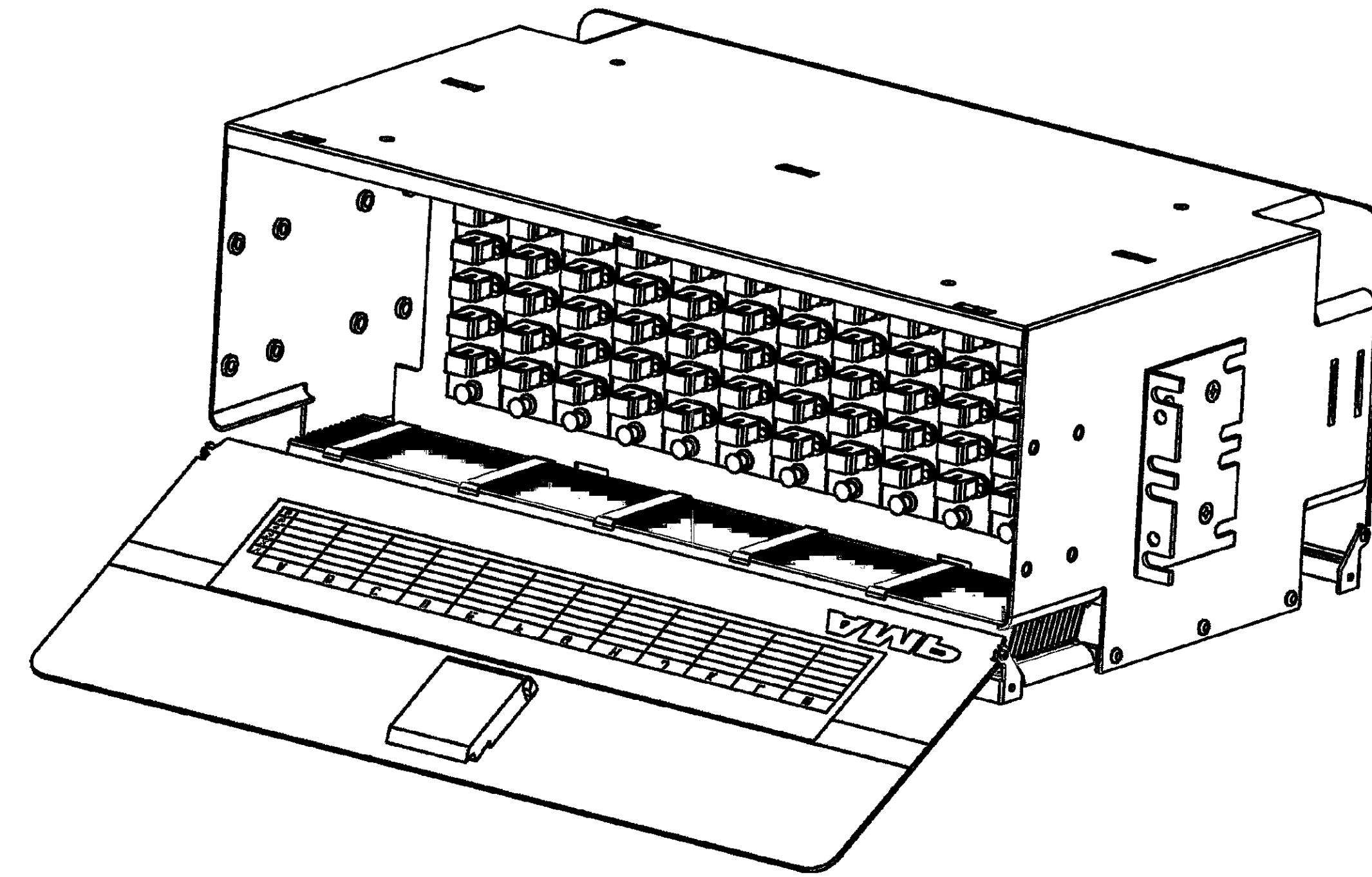
CONNECTOR POSITION A1

REAR VIEW  
 REAR DOOR OMITTED FOR CLARITY



SNAP-IN ADAPTER PLATE ASSY  
 12 PLC

FRONT DOOR OMITTED FOR CLARITY



1321042-3	DARK GRAY
1321042-2	LIGHT GRAY
1321042-1	GREY STAR
PART NUMBER	FINISH (COLOR)

THIS DRAWING IS A CONTROLLED DOCUMENT.		CHK M. MINESES 9-23-98	<b>AMP PPD</b> INCORPORATED 2525 EAST BAYSHORE ROAD PALO ALTO, CA 94303-3210
DIMENSIONS: mm [inches]		CHK D. DEL FAVA 10-12-98	
TOLERANCES UNLESS OTHERWISE SPECIFIED:		APPD H. K. BAUM 10-12-98	NAME
0 PLC	±.8	PRODUCT SPEC	ENCLOSURE ASSY, SC/APC
1 PLC	±.4	EC NO.	72 PORT, TELCO ATDU
2 PLC	±.15	EC NO.	SIZE CASE CODE DRAWING NO
3 PLC	±.1	EC98101201	A1 63570 ©=1321042
4 PLC	±.1	WEIGHT	SCALE 0.50 SHEET 1 OF 1 REV 0
ANGLES	±	CUSTOMER DRAWING	
FINISH			