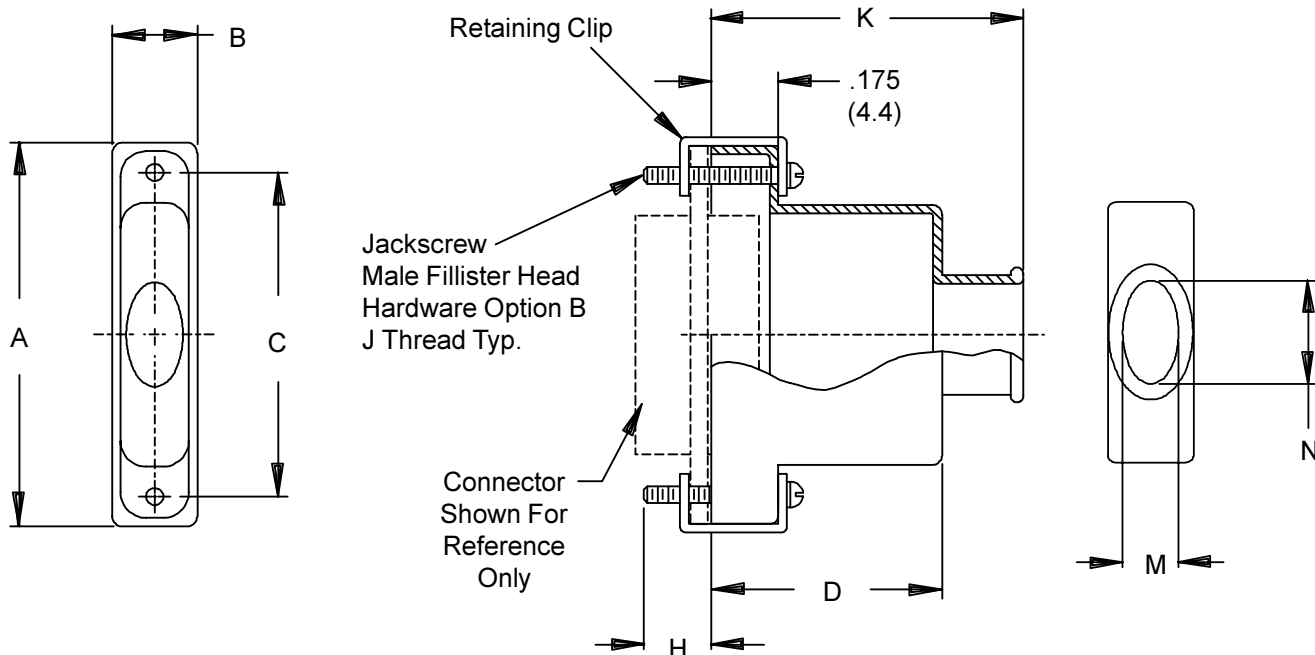




Micro-D Backshells Elliptical Entry EMI Backshell



HOW TO ORDER

Series	Basic Part Number	Shell Plating *	Shell Size (Table I)	Band Option	Hardware Options *
507	081	C – Black Anodize E – Chem. Film J – Gold Iridite Over Cadmium Over Electroless Nickel M – Electroless Nickel NF – Cadmium, Olive Drab Over Electroless Nickel Z2 – Gold	09 15 21 25 31 37 51 100	B 600-052 Band Supplied (Omit if Not Required)	B – (2) male fillister head E – (2) extended jackscrew H – (2) male hex socket F – (2) female jackpost
Sample Part Number:					
507	— 081	M	21	B	H
* SEE PAGE C-2 FOR COMPLETE INFORMATION					

Micro-D Backshells Elliptical Entry EMI Backshell



MIL-PRF-83513
Micro-D

Elliptical entry Micro-D backshells offer greater wire accomodation than round entry backshells. These rugged aluminum backshells are designed for use with Glenair's EMI bands for shield termination.

- **Elliptical Entry for Increased Wire Bundle Size**
- **Aluminum Alloy**
- **Supplied with Mounting Hardware**

TABLE I - DIMENSIONS

SHELL SIZE	A	B	C	D	H
09	.775 (19.7)	.34 (8.6)	.565 (14.4)	.32 (8.1)	.154 (3.9)
15	.925 (23.5)	.34 (8.6)	.715 (18.2)	.44 (11.2)	.154 (3.9)
21	1.075 (27.3)	.34 (8.6)	.865 (22.0)	.56 (14.2)	.154 (3.9)
25	1.175 (29.8)	.34 (8.6)	.965 (24.5)	.62 (15.7)	.154 (3.9)
31	1.325 (33.7)	.34 (8.6)	1.115 (28.3)	.68 (17.3)	.154 (3.9)
37	1.475 (37.5)	.34 (8.6)	1.265 (32.1)	.72 (18.3)	.154 (3.9)
51	1.425 (36.2)	.38 (9.7)	1.215 (30.9)	.75 (19.1)	.154 (3.9)
100	2.160 (54.9)	.43 (10.9)	1.800 (45.7)	.81 (20.6)	.194 (4.9)

SHELL SIZE	J THREAD	K ± .03 (0.8)	M	N
09	2-56 UNC-2	.75 (19.1)	.156 (4.0)	.320 (8.1)
15	2-56 UNC-2	.88 (22.4)	.188 (4.8)	.384 (9.8)
21	2-56 UNC-2	1.00 (25.4)	.219 (5.6)	.448 (11.4)
25	2-56 UNC-2	1.06 (26.9)	.250 (6.4)	.508 (12.9)
31	2-56 UNC-2	1.12 (28.4)	.265 (6.7)	.542 (13.8)
37	2-56 UNC-2	1.16 (29.5)	.281 (7.1)	.572 (14.5)
51	2-56 UNC-2	1.19 (30.2)	.312 (7.9)	.638 (16.2)
100	4-40 UNC-2	1.25 (31.8)	.375 (9.5)	.766 (19.5)

Metric dimensions (mm) are indicated in parentheses.