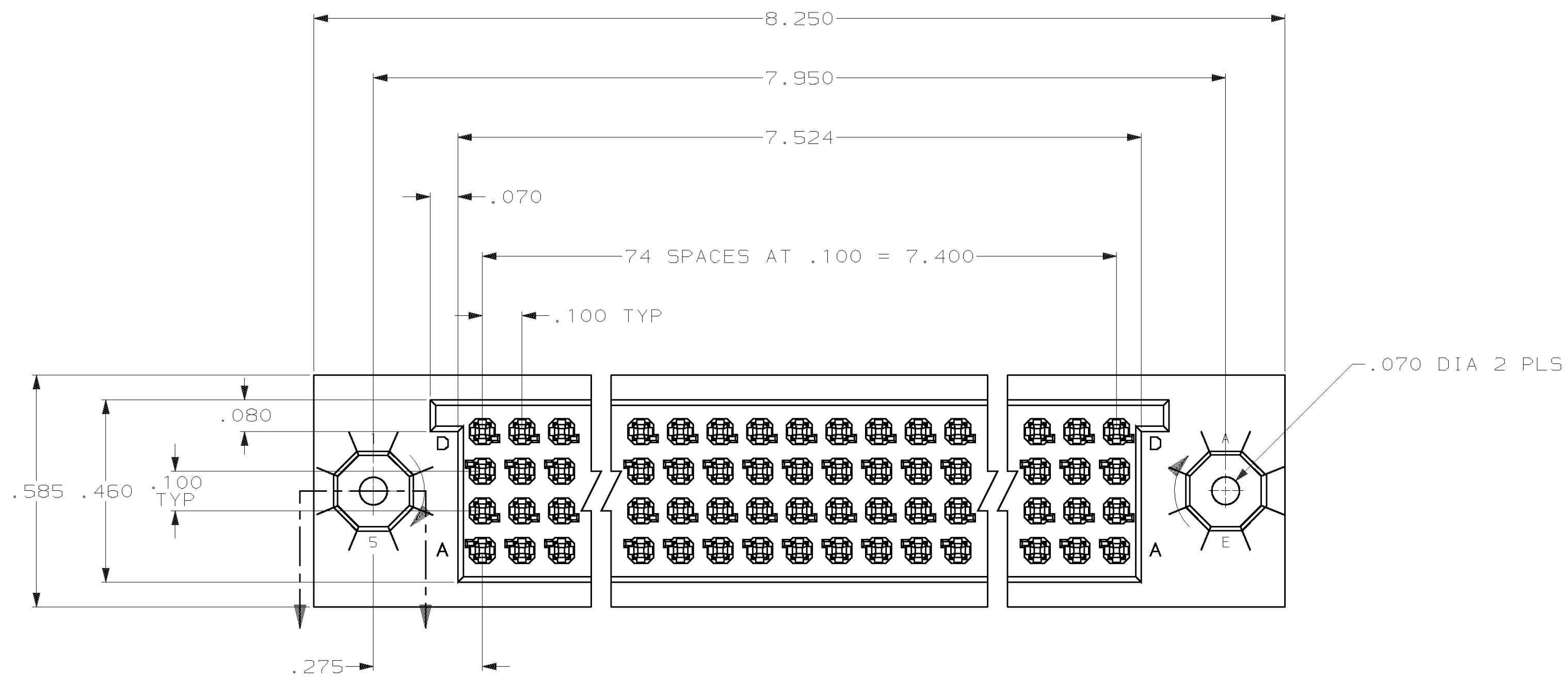
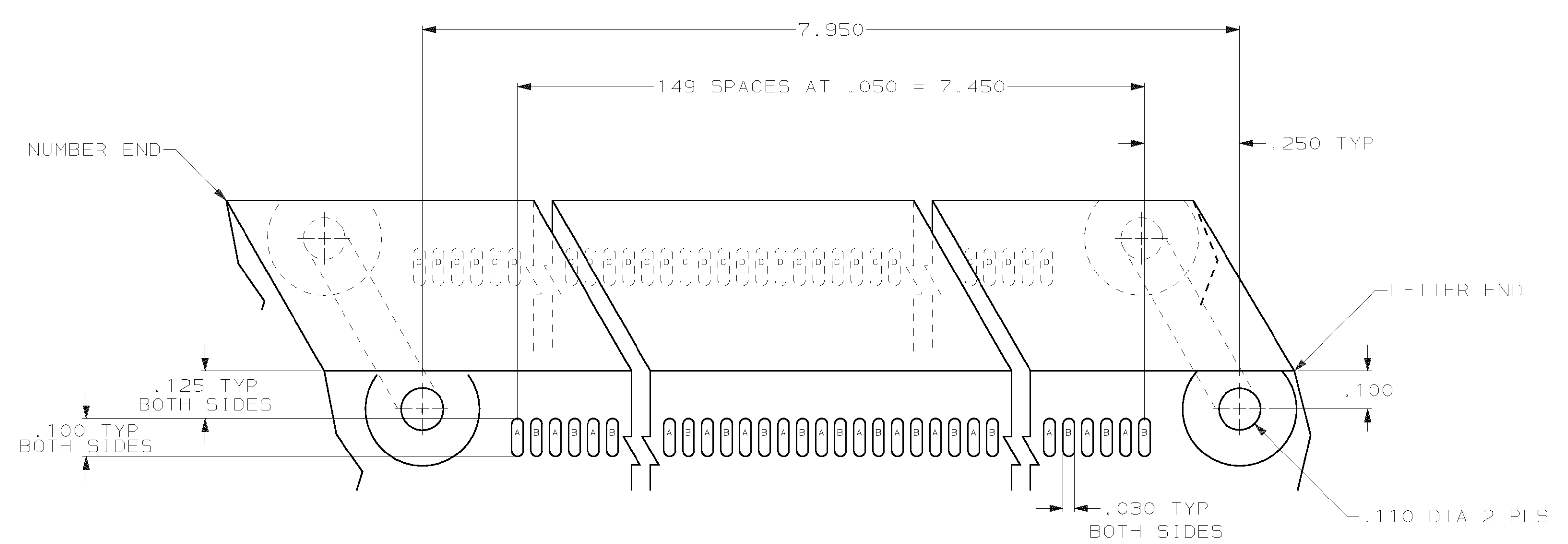
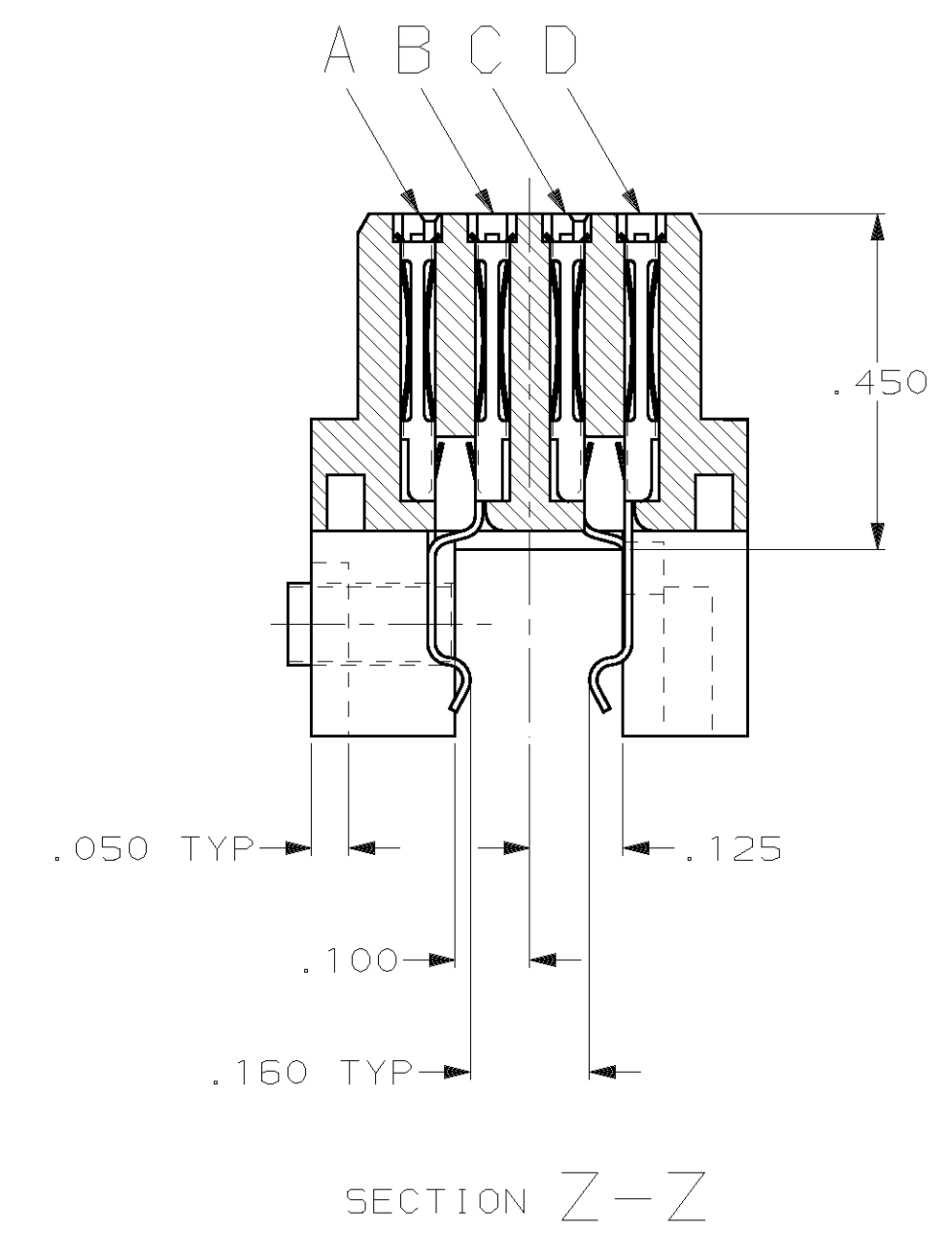
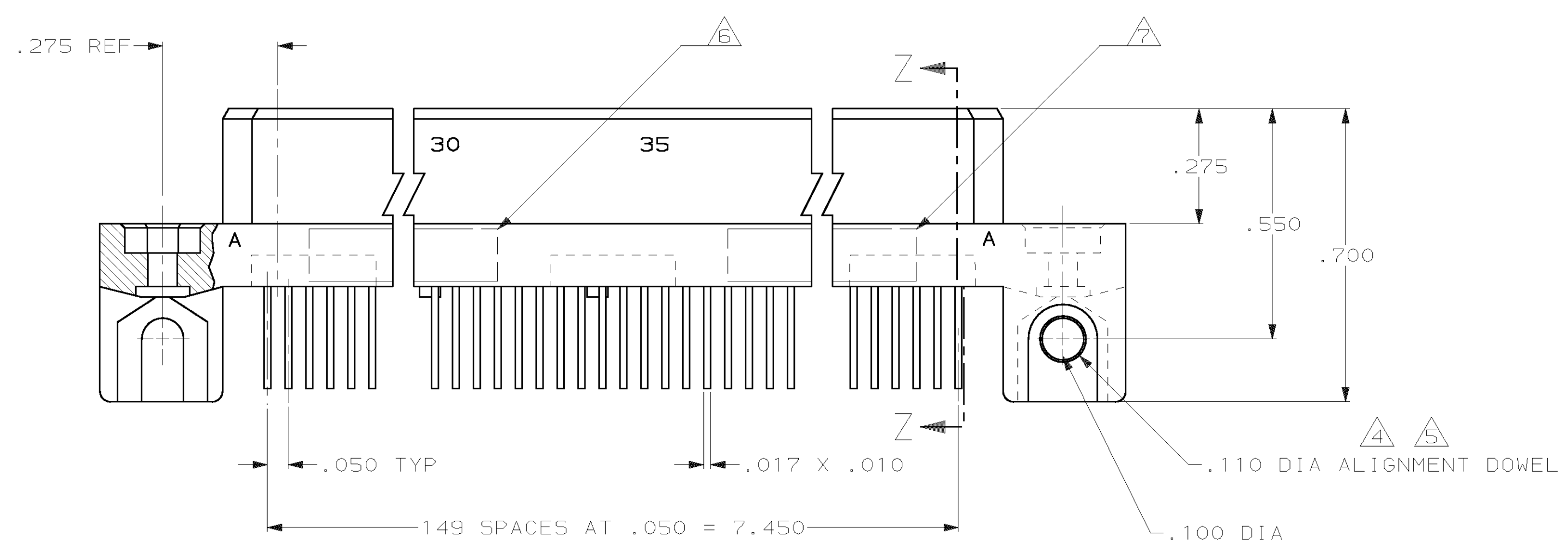


REVISONS		DATE	APPO
Q	WAS 88-5473-018	04/06/89	DLH
A	ECN AD4912	03/22/90	DLH
B	ECN. 0010-1068-93	11/19/93	GES
C	REVISED PER 0622-0001-99	01FEB99	DLH



- ① HOUSING MATERIAL: THERMOPLASTIC, COLOR - NATURAL (BROWN).  
PER MIL-M-24519, TYPE G & T40 F.
- ② CONTACT MATERIAL: BERYLIUM COPPER PER QQ-C-533 ALLOY 172.
- ③ CONTACT FINISH: .000050 GOLD, PER MIL-G-45204 TYPE II, GRADE C, CLASS 1  
IN CONTACT AREA, .000050 - .000100 NICKEL UNDERPLATE,  
PER QQ-N-290 CLASS 1, GRADE N/A. TIN-LEAD PLATED CONTACT SOLDER LEADS PER MIL-T-10727 TYPE I
- ④ ALIGNMENT DOWEL MATERIAL: PHOSPHOR BRONZE PER QQ-B-750, ALLOY UNS NO. C51100.
- ⑤ ALIGNMENT DOWEL FINISH : .000050 MIN. NICKEL PER QQ-N-290 CLASS 1, GRADE N/A
- ⑥ MARKED PER MIL-STD-1285 , TRADE MARK , PART NUMBER , DATE CODE .
- ⑦ MARKED PER MIL-STD-1285 , CUSTOMER IDENTIFICATION , AND PART NUMBER .



650273-1 IS AS SHOWN

RECOMMENDED ETCHED CIRCUIT LAYOUT  
 DRAWN LOOKING THRU BOARD  
 DIMENSIONS & TOLERANCES IN ACCORDANCE WITH ANSI/IPC-D-300G, CLASS C , TYPE I

DO NOT SCALE PRINT. UNLESS SPECIFIED DIMENSIONS IN INCHES TOLERANCES ON : 2 PLC DEC ± . 3 PLC DEC ± .005 ANGLES ± .		DR 04/06/89 DAVID LEE HOFFMAN		PART NO	
MATERIAL		CHK 11/22/93 G.E. SKIPPER		AMP INCORPORATED Harrisburg, Pa. 17105	
FINISH		APPD 11/22/93 G.E. SKIPPER		NAME AMP-HDI 4 ROW RECEPTACLE, LEAD CIRCUIT A AND C SYMMETRIC, STRADDLE MOUNT FOR .175 ± .015 CIRCUIT .100 X .100 CENTER LINE	
WEIGHT		APPD 11/22/93 G.E. SKIPPER		SIZE D 00779	
APPLICATION SPEC		PRODUCT SPEC		DRAWING NO 650273	
SCALE 4:1		SHEET 1 OF 1		CUSTOMER DRAWING	