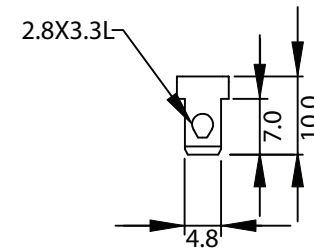
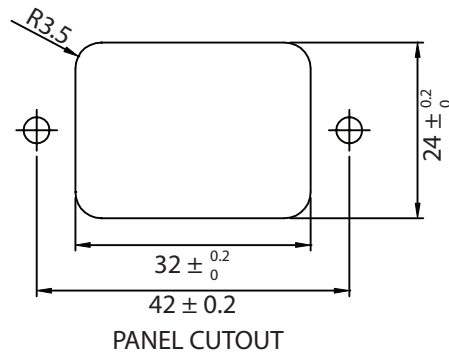
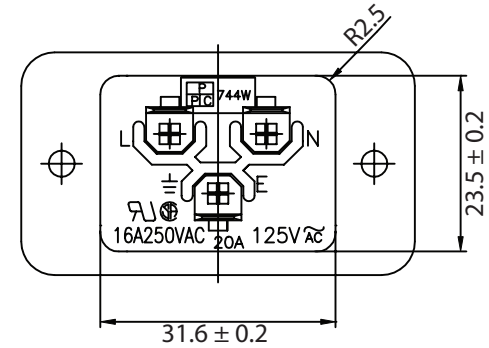
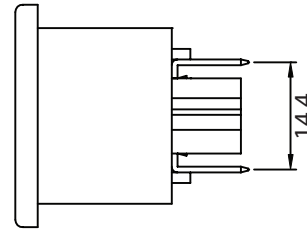
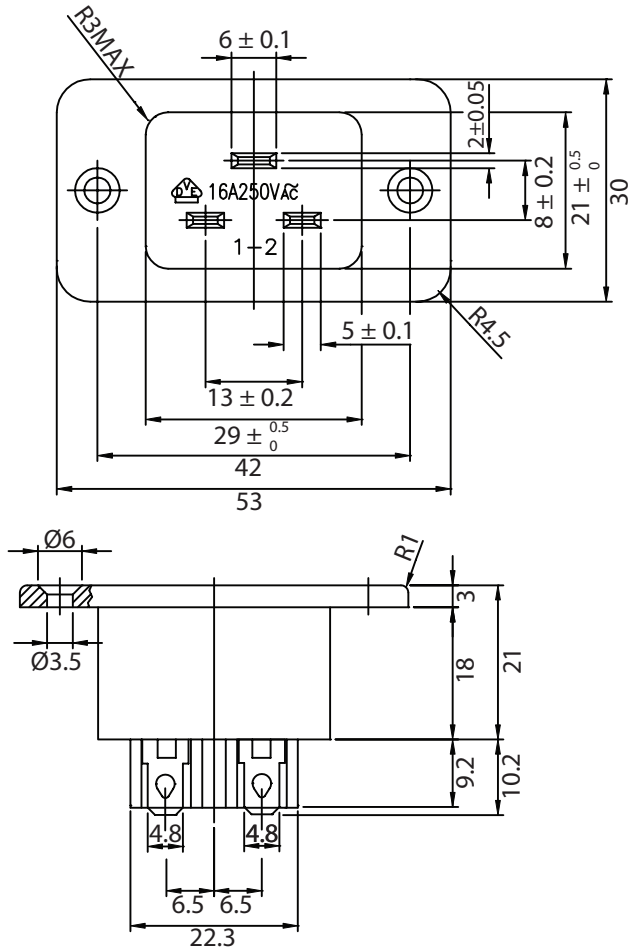


THESE DRAWINGS ARE THE PROPERTY OF QUALTEK ELECTRONICS AND NOT TO BE REPRODUCED FOR OR COMMUNICATED TO A THIRD PARTY WITHOUT THE EXPRESS WRITTEN PERMISSION OF AN OFFICER OF QUALTEK ELECTRONICS.

| REVISION |                 |          |          |
|----------|-----------------|----------|----------|
| REV.     | DESCRIPTION     | DATE     | APPROVED |
| B        | RoHS Compliancy | 06-01-06 | DP       |
|          |                 |          |          |



NOTES:

RATING:

UL, CSA: 20A 250V AC/16A 250V AC

VDE: 16A 250V AC

APPROVALS: UL, CSA, VDE

IEC 60320 C20

RoHS COMPLIANT

**CONTROLLED**

| Dim range (mm) |  | Tolerance +/- (mm) | Qualtek Electronics Corp.<br>PPC DIVISION |                |                 |
|----------------|--|--------------------|---|----------------|-----------------|
| 0-1            |  | 0.15               | Part Number: 744W-00/03                   |                | RoHS Compliant  |
| 1-6            |  | 0.20               | Description: AC RECEPTACLE                |                |                 |
| 6-18           |  | 0.30               | UNIT: mm                                  |                | REV. B          |
| 18-50          |  | 0.50               | Drawn / Date                              | Checked / Date | Approved / Date |
| 50-120         |  | 0.70               | B.Zhang                                   | 02-26-03       | JJH / 02-26-03  |
| 120-250        |  | 0.90               | 02-26-03                                  | 02-26-03       |                 |
| 250-500        |  | 1.20               |   |                |                 |