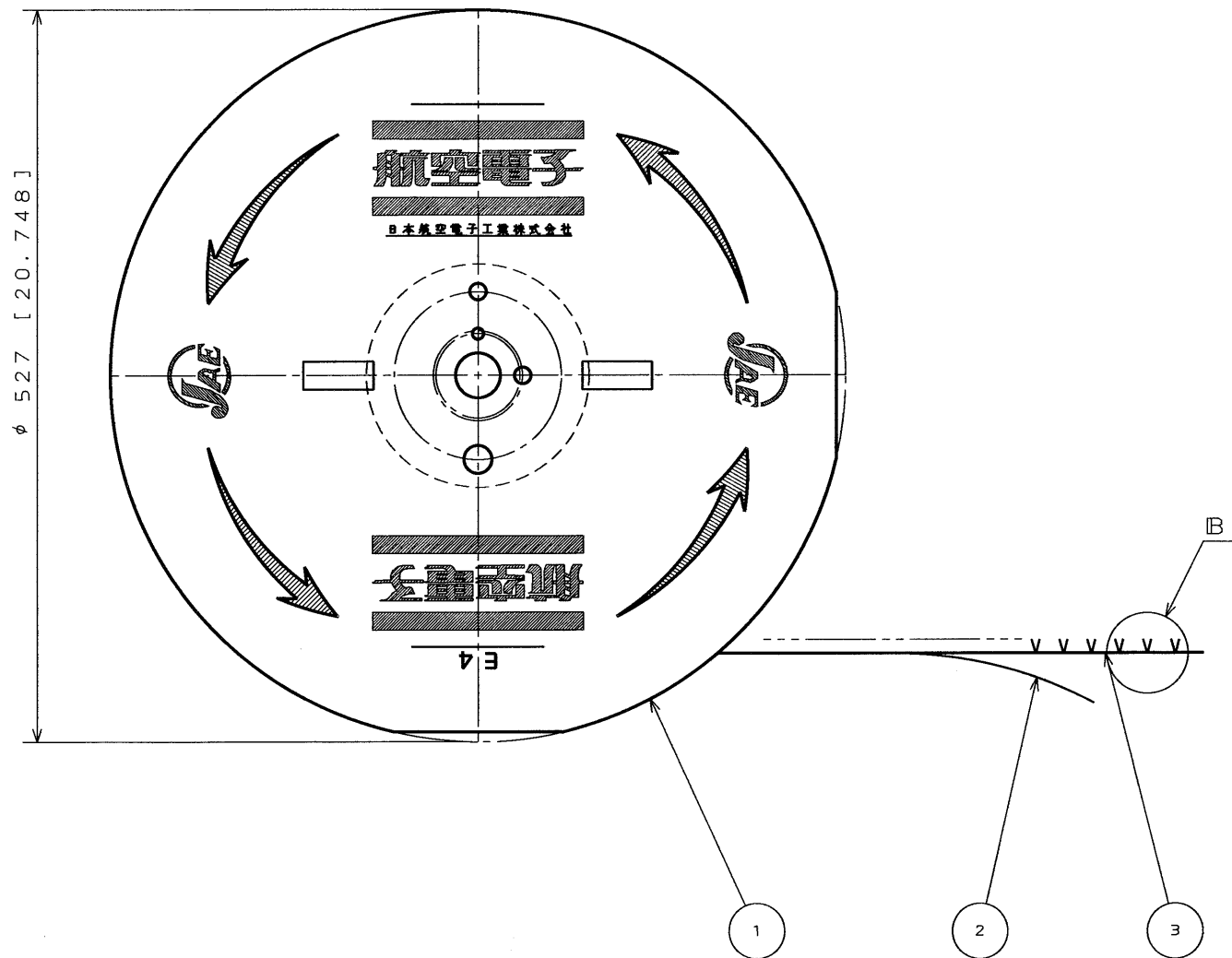
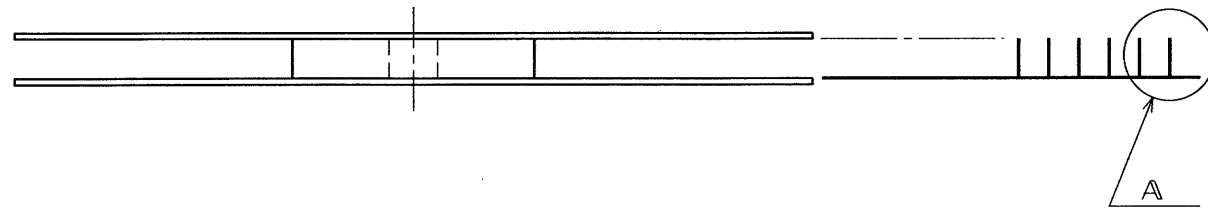


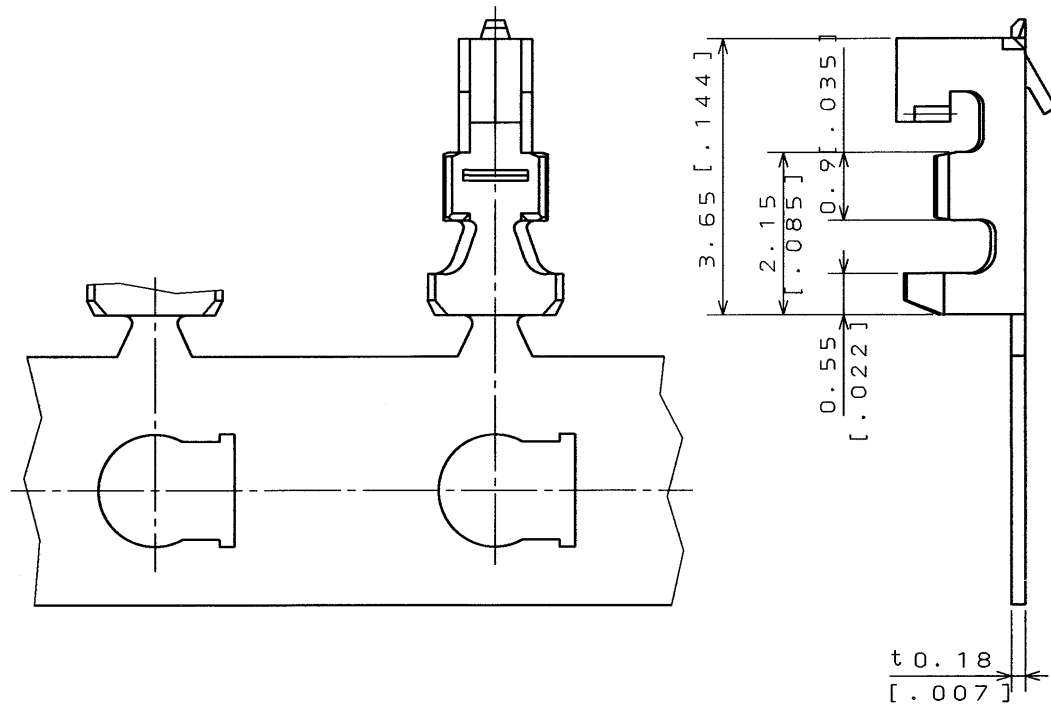
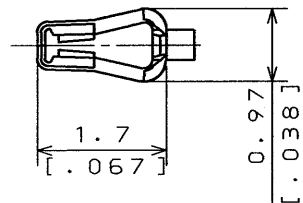
S J 0 2 3 0 3 5 - E

DWG. NO.

SYM.	DCN NO.	DESCRIPTION	DATE	DRAWN	CHECKED	APP'D	APP'D
2	29097	REMOVE NOTE 4	31. Jul '91	J. HAYAKAWA (O. KITADA)	M. SUZUKI	<i>H. Fujino</i>	<i>H. Fujino</i>



EXCLUDING CRIMP PORTION



DETAIL A
(SCALE 10/1)

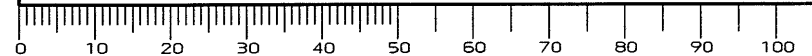
- NOTE 1. APPLICABLE WIRE: AWG#28~#32 (STRANDED)
 INSULATION OUTER DIA.: 0.5~1.0 [0.020]~[0.039]
 2. NO PLATING THE SEARING AREAS.
 3. APPLICABLE CRIMPING MACHINS FOR THIS MAGAZINE ASS'Y IS CT350-2-ILZ

DIMENSIONS ARE IN MILLIMETERS
 TOLERANCES ON: (INCHES)

DIMENSION	TOLERANCE	ANGLES	CONCENTRICITY
. ±0.31.012		X° ±	
.X ±0.21.009		X°X ±	
.XX ±0.11.004			WITHIN T.I.R.
.XXX ±			

3	SOCKET CONTACT	15000	PHOSPHOR BRONZE	TIN PLATING	
2	TAPE	1	PAPER		
1	MAGAZINE	1	PAPER		
ITEM	DESCRIPTION	Q'TY	MATERIAL	FINISH	REMARKS
REFERENCE DOCUMENT		DATE	SCALE		
		B. SEP. '89	JAE-CONNECTOR.COM		
MATERIAL		DRAWN	TITLE		
		J. HAYAKAWA	IL-Z-C3-A-15000		
TREATMENT		CHECKED	Reference Only		
		M. SUZUKI	JAE		
FINISH		APP'D	MUSASHINO, AKISHIMA-SHI		
		T. MIYASHITA	TOKYO, JAPAN		
		APP'D	DWG. NO.		
		H. FUJINO	S J 0 2 3 0 3 5 - E		
			SERIES		
			IL-Z		

DCF-116A



SIZE A3