

# Monolithic crystal filter

## MQF70.0-1400/02



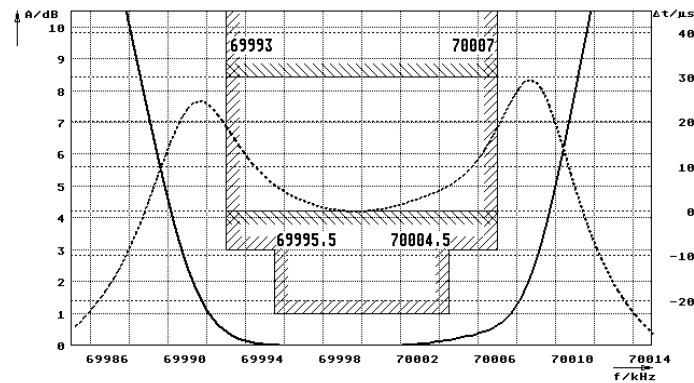
### Application

- 4 pol filter
- i.f.- filter
- use in mobile and stationary transceivers

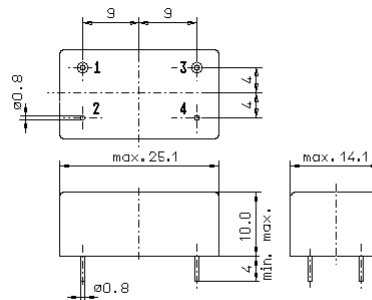
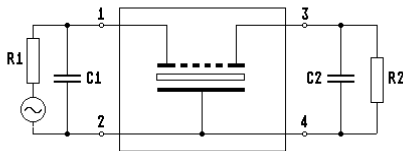
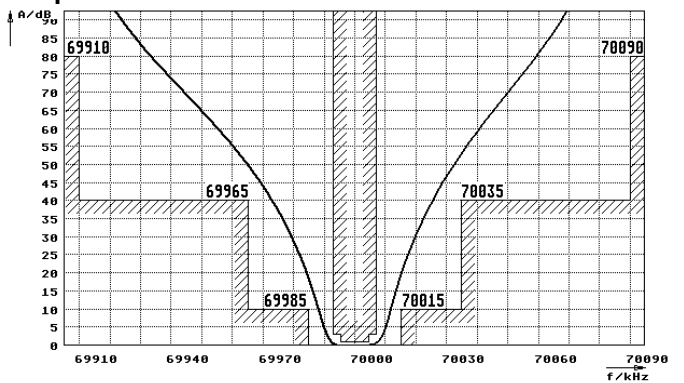
Limiting values		Unit	Value
Nominal frequency	$f_0$	MHz	70.0
Insertion loss		dB	< 4.0
Pass band at 3.0dB		kHz	$\pm > 7$
Ripple in pass band	$f_0 \pm 4.5$ kHz	dB	< 1.0
Stop band attenuation	$f_0 \pm 15$ kHz	dB	> 10
	$f_0 \pm 35$ kHz	dB	> 40
Alternate attenuation	$f_0 \pm 0.09...50$ MHz	dB	> 60
Spurious responses		dB	> 40
Group delay distortion	$f_0 \pm 7$ kHz	$\mu$ s	< 30
Terminating impedance Z			
R1  C1		Ohm/pF	50    0
R2  C2		Ohm/pF	50    0
Operating temp. range		$^{\circ}$ C	-20... +85
Storage temp. range		$^{\circ}$ C	-45... +85
Environment conditions			according to CF001

### Characteristics MQF70.0-1400/02

#### Pass band



#### Stop band



GM3

- Pin connections:
- 1 Input
  - 2 Ground
  - 3 Output
  - 4 Ground

RoHS compliant