

Storage Choke, fully potted resin



**Description**

- Storage choke
- THT-terminals
- Reduced magnetic reversal
- Constant inductance at high alternating field modulation and large DC magnetization
- Constant inductance at high alternating field modulation and large DC magnetization
- Fully potted resin

**Standards**

- EN 60938

**Applications**

- Storage of energy in switched power supplies
- Switch-mode
- Chopper amplifiers
- DC drives and stepper motor controls

**References**

[General Product Information](#)

**Weblinks**

[Approvals](#), [RoHS](#), [CHINA-RoHS](#), [e-Store](#), [Distributor-Stock-Check](#)

**Technical Data**

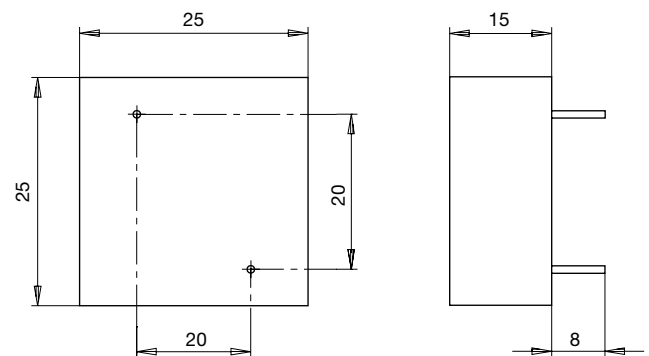
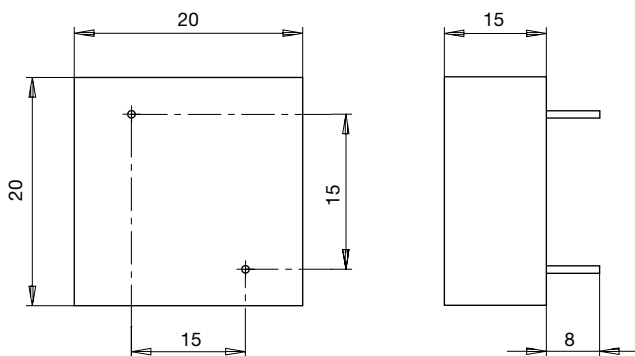
Rated voltage	up to 600VDC
Rated Current	0.5 - 16A @ Ta 70 °C
Rated inductance	0.01 - 1 mH, Tol. ±15%
Power Operating Frequency	up to 1 MHz
Terminal technic	THT
Weight	7 - 243 g
Material: Housing	UL 94V-0
Sealing Compound	UL 94V-0

Isolation Voltage	2 kV eff., winding to ambient
Climatic Category	40/125/21 acc. to IEC 60068-1
Allowable Operation Temp.	-40 °C to 125 °C

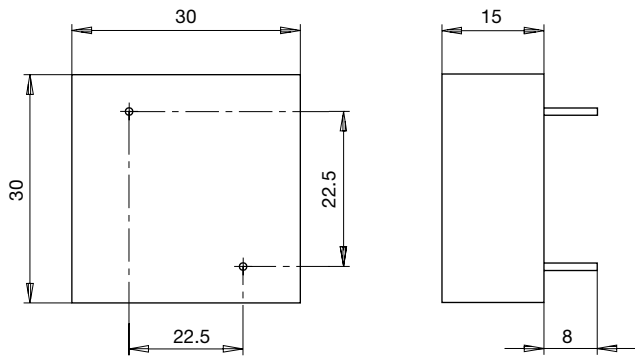
**Dimensions**

Case 20

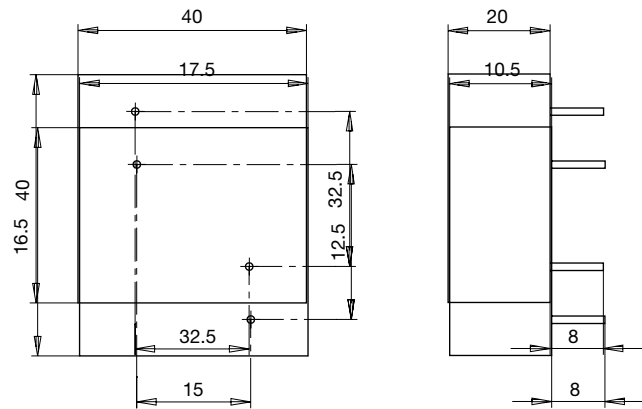
Case 25



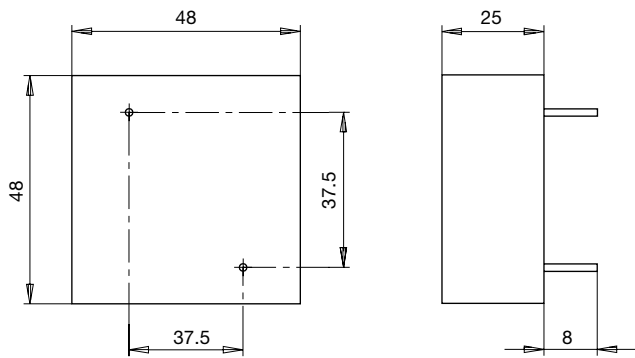
Case 30



Case 40



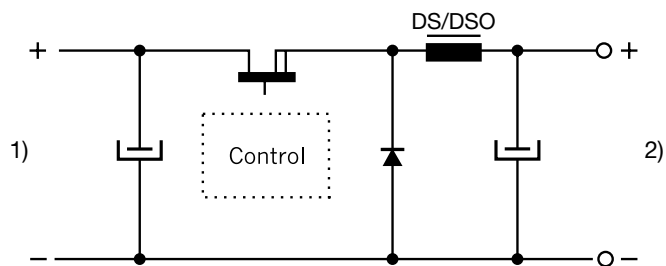
Case 48



Case 175

## Diagrams

Switch-mode



1) Input  
2) DC output regulated

## Variants

$I_n$ [A]	$L_n$ [mH]	$R_{cu}$ [mΩ]	$f_{RES}$ [MHz]	Copper ø [mm]	Weight [g]	Housing	Packing unit [pcs.]	Order Number
0.5	0.8	700	2	0.5	7	175	100	DS1-175-0001
0.63	0.5	500	2.5	0.5	7	175	100	DS1-175-0002
1	0.2	180	5	0.5	7	175	100	DS1-175-0003
1.4	0.1	80	6.5	0.5	7	175	100	DS1-175-0004
3	0.035	26	11	0.5	7	175	100	DS1-175-0005
0.63	1	700	1.2	0.5	14	20	75	DS1-20-0001
1.4	0.2	175	4	0.5	14	20	75	DS1-20-0002
3.15	0.04	26	10	0.7	14	20	75	DS1-20-0003
6.3	0.01	8	-	0.7	14	20	75	DS1-20-0004
1.4	0.5	200	1	1	23	25	25	DS1-25-0001
2	0.2	100	3.5	1	23	25	25	DS1-25-0002
3.15	0.1	40	5.7	1	23	25	25	DS1-25-0003
7	0.02	10	-	1	23	25	25	DS1-25-0004
1.6	0.5	200	-	1	34	30	30	DS1-30-0001
2	0.3	140	-	1	34	30	30	DS1-30-0002
3.15	0.15	55	4.5	1	34	30	30	DS1-30-0003
4	0.1	36	6	1	34	30	30	DS1-30-0004
2	1	190	-	1.5	84	40	35	DS1-40-0001
3.15	0.5	90	-	1.5	85	40	35	DS1-40-0002
4	0.2	55	3	1.5	84	40	35	DS1-40-0003
6	0.1	26	4.5	1.5	84	40	35	DS1-40-0004
3.15	1	160	1	1.5	243	48	20	DS1-48-0001
4	0.5	80	1.5	1.5	243	48	20	DS1-48-0002
5	0.3	75	-	1.5	243	48	20	DS1-48-0003
9	0.1	20	-	1.5	243	48	20	DS1-48-0004
15	0.035	7	-	1.5	243	48	20	DS1-48-0005
16	0.16	12	-	1.5	243	48	20	DS1-48-0006