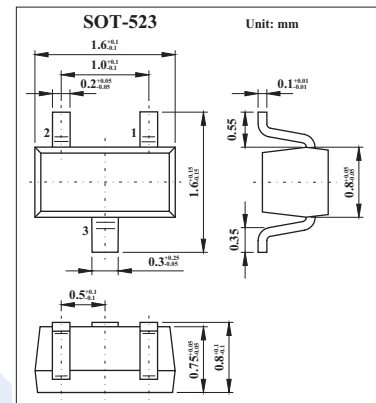
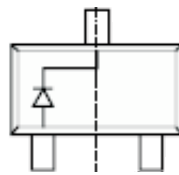


## Surface Mount Fast Switching Diode KAS21T(BAS21T)

### ■ Features

- Ultra-Small Surface Mount Package
- Fast Switching Speed
- For General Purpose Switching Applications
- High Conductance



### ■ Absolute Maximum Ratings Ta = 25°C

Parameter	Symbol	Rating	Unit
Peak repetitive reverse voltage	V <sub>RRM</sub>	250	V
Working peak reverse voltage	V <sub>RWM</sub>	200	
DC blocking voltage	V <sub>R</sub>	200	
RMS reverse voltage	V <sub>R(RMS)</sub>	141	V
Average rectified output current	I <sub>O</sub>	200	mA
Forward Continuous Current	I <sub>FM</sub>	400	mA
Non-Repetitive Peak Forward Surge Current @ t = 1.0 μs	I <sub>FSM</sub>	2.5	A
@ t = 1.0s		0.5	
Repetitive Peak Forward Surge Current	I <sub>FRM</sub>	625	mA
Power dissipation	P <sub>D</sub>	150	mW
Typical Thermal Resistance Junction to Ambient	R <sub>θJA</sub>	833	°C/W
Operating and storage temperature range	T <sub>j</sub> , T <sub>stg</sub>	-65 to +150	°C

### ■ Electrical Characteristics Ta = 25°C

Parameter	Symbol	Testconditions	Min	Typ	Max	Unit
Maximum Forward Voltage	V <sub>FM</sub>	I <sub>F</sub> = 100mA I <sub>F</sub> = 200mA			1.0 1.25	V
Maximum Peak Reverse Current @ Rated DC Blocking Voltage	I <sub>RM</sub>	T <sub>j</sub> = 25°C T <sub>j</sub> = 100°C			100 15	nA μA
Junction Capacitance	C <sub>J</sub>	V <sub>R</sub> = 0, f = 1.0MHz			5.0	pF
Reverse Recovery Time	t <sub>rr</sub>	I <sub>F</sub> = I <sub>R</sub> = 30mA, I <sub>rr</sub> = 0.1 X I <sub>R</sub> , R <sub>L</sub> = 100 Ω			50	ns

### ■ Marking

Marking	T3