

M24758/19 Adapter for Panel Termination

M24758/19-16-A

Basic Part No. ————
 Conduit Size Code (See Table I) ————
 Material Designator:
 A = Aluminum
 B = Brass
 C = CRES 316

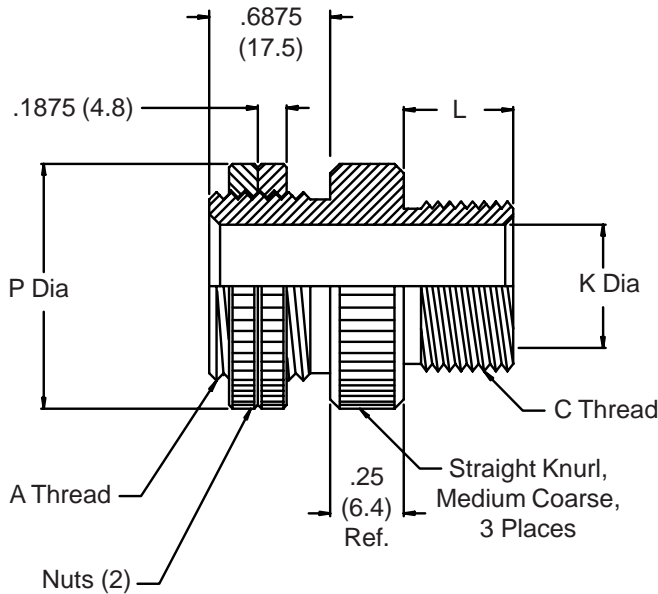


TABLE I

Conduit Size Code	A Thread (Class 2A)	P Dia Min.	C Thread (Class 2A)	L ±.02 (.5)	K Dia Min.
02	0.625 - 24 UNEF	.870 (22.1)	0.438 - 28 UNEF	.210 (5.3)	.250 (6.4)
03	0.750 - 20 UNEF	1.000 (25.4)	0.563 - 24 UNEF	.250 (6.4)	.370 (9.4)
04	0.875 - 20 UNEF	1.120 (28.4)	0.688 - 24 UNEF	.250 (6.4)	.500 (12.7)
05	1.000 - 20 UNEF	1.250 (31.8)	0.813 - 20 UNEF	.310 (7.9)	.620 (15.7)
06	1.188 - 18 UNEF	1.430 (36.3)	0.938 - 20 UNEF	.310 (7.9)	.750 (19.1)
08	1.438 - 18 UNEF	1.680 (42.7)	1.250 - 18 UNEF	.370 (9.4)	1.000 (25.4)
10	1.750 - 16 UN	2.000 (50.8)	1.563 - 18 UNEF	.370 (9.4)	1.250 (31.8)
12	2.000 - 16 UN	2.250 (57.2)	1.875 - 16 UN	.430 (10.9)	1.500 (38.1)
16	2.500 - 16 UN	3.000 (76.2)	2.375 - 16 UN	.430 (10.9)	2.000 (50.8)
20	3.000 - 16 UN	3.500 (88.9)	2.875 - 16 UN	.430 (10.9)	2.500 (63.5)
24	3.500 - 16 UN	4.000 (101.6)	3.375 - 16 UN	.430 (10.9)	3.000 (76.2)

1. The M24758/19 adapter provides the capability of terminating a M24758/2, M24758/3, or M24758/4 fitting to a panel.
2. Metric dimensions (mm) are indicated in parentheses.
3. For complete dimensions see applicable Military Specification.