

PLEASE CHECK WWW.MOLEX.COM FOR LATEST PART INFORMATION

Part Number: [0357252411](#)
Status: **Active**
Description: Quick Disconnect, Female, for 14-18 AWG (2.00 - 0.80mm²) Wire, Metal Strip, Tab 6.35 by 0.81mm (.250 by .032"), Slip-On Type with Slot, Post Tin Plating, High Tension Type

Documents:

[Drawing \(PDF\)](#) [RoHS Certificate of Compliance \(PDF\)](#)
[Product Specification PS-35703-001 \(PDF\)](#)

Agency Certification

UL E92853

General

Product Family Quick Disconnects
 Series [35725](#)
 Crimp Quality Equipment Yes
 Product Name N/A
 Type Quick Disconnect

Physical

Barrel Type Open
 Gender Female
 Glow-Wire Compliant No
 Insulation None
 Lock to Mating Part Yes
 Material - Metal Brass
 Orientation Straight
 Packaging Type Reel
 Polarized to Mating Part No
 Tab Thickness 0.81mm (.032")
 Tab Width 6.35mm (.250")
 Temperature Range - Operating -40°C to +120°C
 Wire Insulation Diameter 3.81mm (.150") max.
 Wire Size AWG 14, 16, 18
 Wire Size mm² 0.80 - 2.00

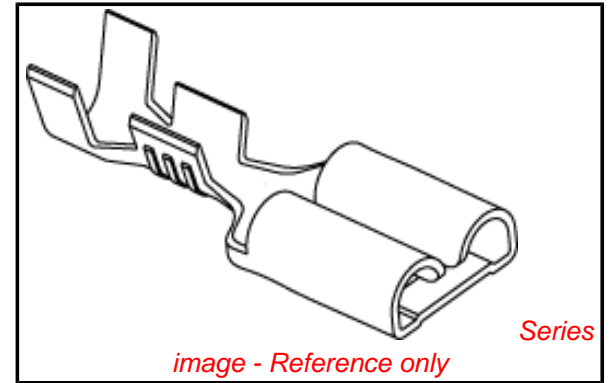
Electrical

Voltage - Maximum 300V

Material Info

Reference - Drawing Numbers

Product Specification PS-35703-001
 Sales Drawing SD-35725-002



EU RoHS

ELV and RoHS Compliant
REACH SVHC Contains SVHC: No
Halogen-Free Status
Halogen-Free

China RoHS



Need more information on product environmental compliance?

Email productcompliance@molex.com
 For a multiple part number RoHS Certificate of Compliance, [click here](#)

Please visit the [Contact Us](#) section for any non-product compliance questions.

Search Parts in this Series
[35725Series](#)

Use With
 6.35mm (.250") Tab

DWG. IO.
SD-35725-002

SIMILAR ITEM

PROJECT NO.

c

b

DO NOT SCALE DRAWING
DIMENSION IN METRIC

8 7 6 5 4 3 2 1

F

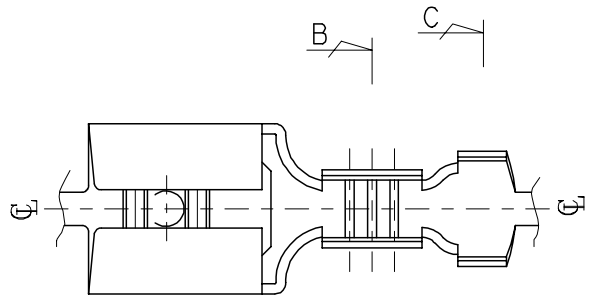
E

D

C

B

A

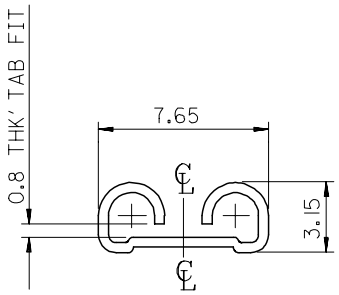
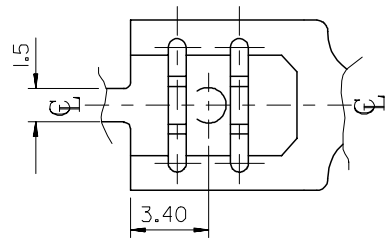
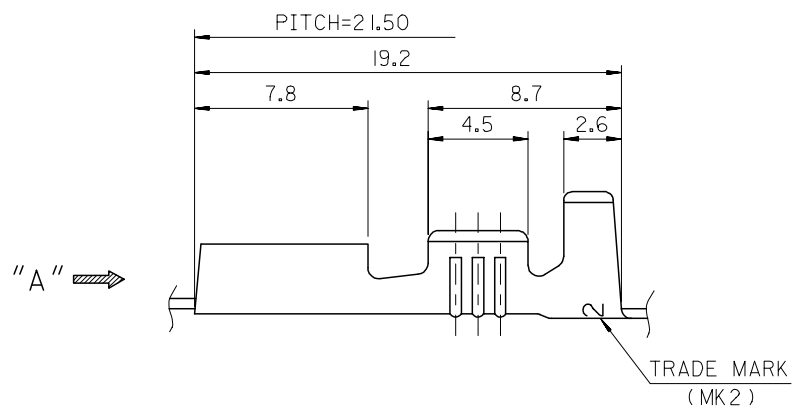
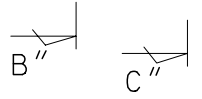


- NOTES
- MATERIAL : BRASS , 0.45mm THICKNESS
 - PART NO. AND FINISH

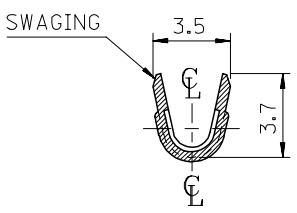
PART NO.	MATERIAL NO.	FINISH	TRADE MARK
35725-2400	357252400	UNPLATED	MK2
35725-2411	357252411	POST PLATED TIN	H MK2
35725-2410	357252410	POST PLATED TIN	MK2

H (TRADE MARK) : HIGH TENSION TIN-PLATED PRODUCT

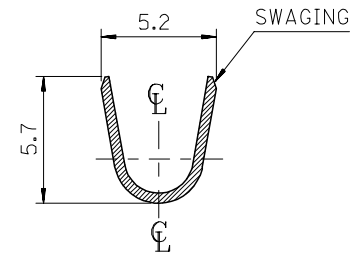
- APPLICABLE WIRE RANGE : AWG #18 - #14
- RECOMMENDED LENGTH OF WIRE STRIP IS 6.0-6.8mm



VIEW "A"



SEC' : B-B''



SEC' : C-C''

REVISED EC NO. KOR2005-0198 DRWN: J.B.JIN 05/04/29 CHK: W.Y.YANG APPR: C.W.LEE	DESCRIPTION	QUALITY SYMBOLS	GENERAL TOLERANCES: (UNLESS SPECIFIED)		SCALE 4.5:1	DESIGN UNITS <input checked="" type="checkbox"/> MM <input type="checkbox"/> INCH	THIRD ANGLE PROJECTION	DIMENSIONS: <input type="checkbox"/> MM <input type="checkbox"/> INCH <input type="checkbox"/> MM <input checked="" type="checkbox"/> ONLY		SHT	REV
		MAJOR = 0	mm	INCH	DRAWN BY & DATE J.S.KANG 93/07/02	TITLE: .250 SLIP-ON RECEPTACLE (SLOT TYPE)					
C2	REV	CRITICAL C = 0	4 PLACES	±0.	±.	CHECKED BY & DATE B.K.CHOI 93/07/02	MOLEX INCORPORATED				
			3 PLACES	±0.	±.	APPROVED BY & DATE C.W.LEE 93/07/02	MATERIAL NO. SEE TABLE	DRAWING NO. SD-35725-002	SHEET NO. 1 OF 1		
			2 PLACES	±0.20	±.	CAD FILENAME S7252400.dgn					
			1 PLACE	±0.30	±.	THIS DRAWING CONTAINS INFORMATION THAT IS PROPRIETARY TO MOLEX INCORPORATED AND SHOULD NOT BE USED WITHOUT WRITTEN PERMISSION.					SIZE B
			ANGULAR: ± °								
			DRAFT WHERE APPLICABLE MUST REMAIN WITHIN DIMENSIONS								

8 7 6 5 4 3 2 1 MX-A3