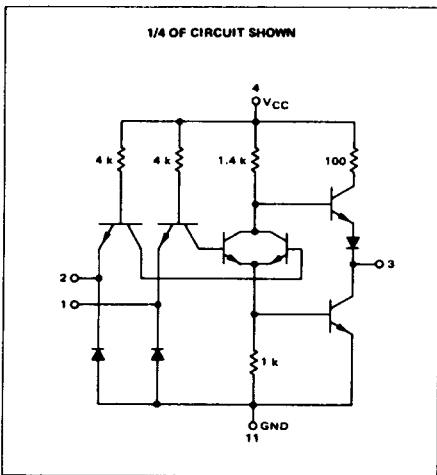


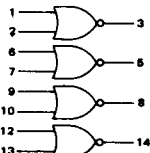
QUAD 2-INPUT "NOR" GATE

MTTL MC5400F/7400F series

MC5402F*
MC7402F*



This device consists of four 2-input NOR gates. Each gate may be used as an inverter, or two gates may be cross-coupled to form bistable circuits.



Positive Logic: $3 = \overline{1 + 2}$
Negative Logic: $3 = \overline{1} \cdot \overline{2}$

Input Loading Factor = 1
Output Loading Factor = 10

Total Power Dissipation = 48 mW typ/pkg
Propagation Delay Time = 13 ns typ

*F suffix = TO-8B ceramic package (Case 609).
See General Information section for package outline dimensions.

VOLTAGE WAVEFORMS AND DEFINITIONS

SWITCHING TIME TEST CIRCUIT

