

**2M-BIT CMOS STATIC RAM
256K-WORD BY 8-BIT
EXTENDED TEMPERATURE OPERATION**

Description

The μ PD442000L-X is a high speed, low power, 2,097,152 bits (262,144 words by 8 bits) CMOS static RAM.

The μ PD442000L-X has two chip enable pins (/CE1, CE2) to extend the capacity. And battery backup is available.

B, C and D versions are low voltage versions.

- ★ The μ PD442000L-X is packed in 32-pin plastic TSOP (I) (8×13.4 mm) and (8×20 mm).

Features

- 262,144 words by 8 bits organization
- ★ • Fast access time : 70, 85, 100, 120, 150, 180 ns (MAX.)
- Low voltage operation
(B version : $V_{CC} = 2.7$ to 3.6 V, C version : $V_{CC} = 2.2$ to 3.6 V, D version : $V_{CC} = 1.8$ to 3.6 V)
- Low V_{CC} data retention : 1.5 V (MIN.)
- Operating ambient temperature : $T_A = -25$ to +85 °C
- Output Enable input for easy application
- Two Chip Enable inputs : /CE1, CE2

| Part number | Access time ns (MAX.) | Operating supply voltage V | Operating ambient temperature °C | Supply current | | |
|------------------------|------------------------------|----------------------------------|--|---------------------------|------------------------------|-------------------------------------|
| | | | | At operating mA (MAX.) | At standby μ A (MAX.) | At data retention μ A (MAX.) |
| μ PD442000L-BxxX | 70 ^{Note} , 85, 100 | 2.7 to 3.6 | -25 to +85 | 35 | 2 | 2 |
| μ PD442000L-CxxX | 100, 120, 150 | 2.2 to 3.6 | | 30 | | |
| ★ μ PD442000L-DxxX | 150, 180 | 1.8 to 3.6 | | 25 | | |

Note Under development

The information in this document is subject to change without notice. Before using this document, please confirm that this is the latest version.
Not all devices/types available in every country. Please check with local NEC representative for availability and additional information.

★ Ordering Information

| Part number | Package | Access time ns (MAX.) | Operating supply voltage V | Operating temperature °C | Remark | | | |
|---------------------------------------|--|--|----------------------------------|--------------------------------|-----------|------------|--|-----------|
| μPD442000LGU-B70X-9JH ^{Note} | 32-pin Plastic TSOP (I) (8×13.4) (Normal bent) | 70 | 2.7 to 3.6 | -25 to +85 | B version | | | |
| μPD442000LGU-B85X-9JH | | 85 | | | | | | |
| μPD442000LGU-B10X-9JH | | 100 | | | | | | |
| μPD442000LGU-B70X-9KH ^{Note} | 32-pin Plastic TSOP (I) (8×13.4) (Reverse bent) | 70 | | | | | | |
| μPD442000LGU-B85X-9KH | | 85 | | | | | | |
| μPD442000LGU-B10X-9KH | | 100 | | | | | | |
| μPD442000LGZ-B70X-KJH ^{Note} | 32-pin Plastic TSOP (I) (8×20) (Normal bent) | 70 | | | | | | |
| μPD442000LGZ-B85X-KJH | | 85 | | | | | | |
| μPD442000LGZ-B10X-KJH | | 100 | | | | | | |
| μPD442000LGZ-B70X-KKH ^{Note} | 32-pin Plastic TSOP (I) (8×20) (Reverse bent) | 70 | | | | | | |
| μPD442000LGZ-B85X-KKH | | 85 | | | | | | |
| μPD442000LGZ-B10X-KKH | | 100 | | | | | | |
| μPD442000LGU-C10X-9JH | 32-pin Plastic TSOP (I) (8×13.4) (Normal bent) | 100 | 2.2 to 3.6 | | C version | | | |
| μPD442000LGU-C12X-9JH | | 120 | | | | | | |
| μPD442000LGU-C15X-9JH | | 150 | | | | | | |
| μPD442000LGU-C10X-9KH | 32-pin Plastic TSOP (I) (8×13.4) (Reverse bent) | 100 | | | | | | |
| μPD442000LGU-C12X-9KH | | 120 | | | | | | |
| μPD442000LGU-C15X-9KH | | 150 | | | | | | |
| μPD442000LGZ-C10X-KJH | 32-pin Plastic TSOP (I) (8×20) (Normal bent) | 100 | | | | | | |
| μPD442000LGZ-C12X-KJH | | 120 | | | | | | |
| μPD442000LGZ-C15X-KJH | | 150 | | | | | | |
| μPD442000LGZ-C10X-KKH | 32-pin Plastic TSOP (I) (8×20) (Reverse bent) | 100 | | | | | | |
| μPD442000LGZ-C12X-KKH | | 120 | | | | | | |
| μPD442000LGZ-C15X-KKH | | 150 | | | | | | |
| μPD442000LGU-D15X-9JH | 32-pin Plastic TSOP (I) (8×13.4) (Normal bent) | 150 | | | | 1.8 to 3.6 | | D version |
| μPD442000LGU-D18X-9JH | | 180 | | | | | | |
| μPD442000LGU-D15X-9KH | | 32-pin Plastic TSOP (I) (8×13.4) (Reverse bent) | | | | | | |
| μPD442000LGU-D18X-9KH | 180 | | | | | | | |
| μPD442000LGZ-D15X-KJH | 32-pin Plastic TSOP (I) (8×20) (Normal bent) | | | | | | | |
| μPD442000LGZ-D18X-KJH | | 180 | | | | | | |
| μPD442000LGZ-D15X-KKH | | 32-pin Plastic TSOP (I) (8×20) (Reverse bent) | | | | | | |
| μPD442000LGZ-D18X-KKH | 180 | | | | | | | |

Note Under development

Pin Configurations (Marking Side)

/xxx indicates active low signal.

32-pin Plastic TSOP (I) (8×13.4) (Normal bent)

[μPD442000LGU-BxxX-9JH]

[μPD442000LGU-CxxX-9JH]

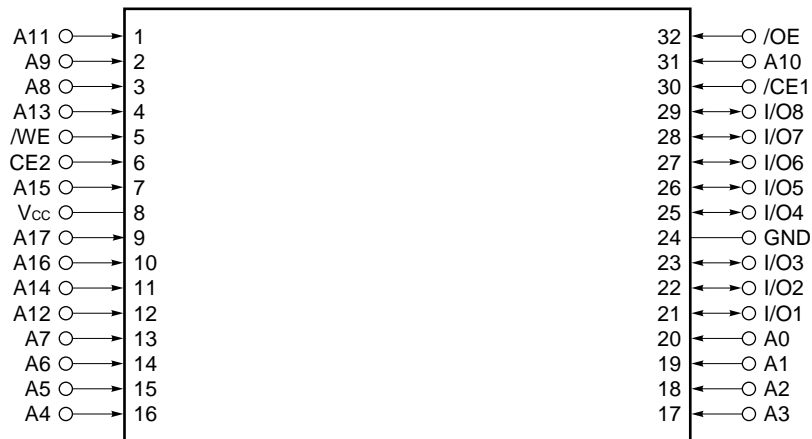
[μPD442000LGU-DxxX-9JH]

32-pin Plastic TSOP (I) (8×20) (Normal bent)

[μPD442000LGZ-BxxX-KJH]

[μPD442000LGZ-CxxX-KJH]

[μPD442000LGZ-DxxX-KJH]



- A0 - A17 : Address inputs
- I/O1 - I/O8 : Data inputs / outputs
- /CE1, CE2 : Chip Enable 1, 2
- /WE : Write Enable
- /OE : Output Enable
- Vcc : Power supply
- GND : Ground

Remark Refer to **Package Drawings** for the 1-pin index mark.

32-pin Plastic TSOP (I) (8x13.4) (Reverse bent)

[μPD442000LGU-BxxX-9KH]

[μPD442000LGU-CxxX-9KH]

[μPD442000LGU-DxxX-9KH]

32-pin Plastic TSOP (I) (8x20) (Reverse bent)

[μPD442000LGZ-BxxX-KKH]

[μPD442000LGZ-CxxX-KKH]

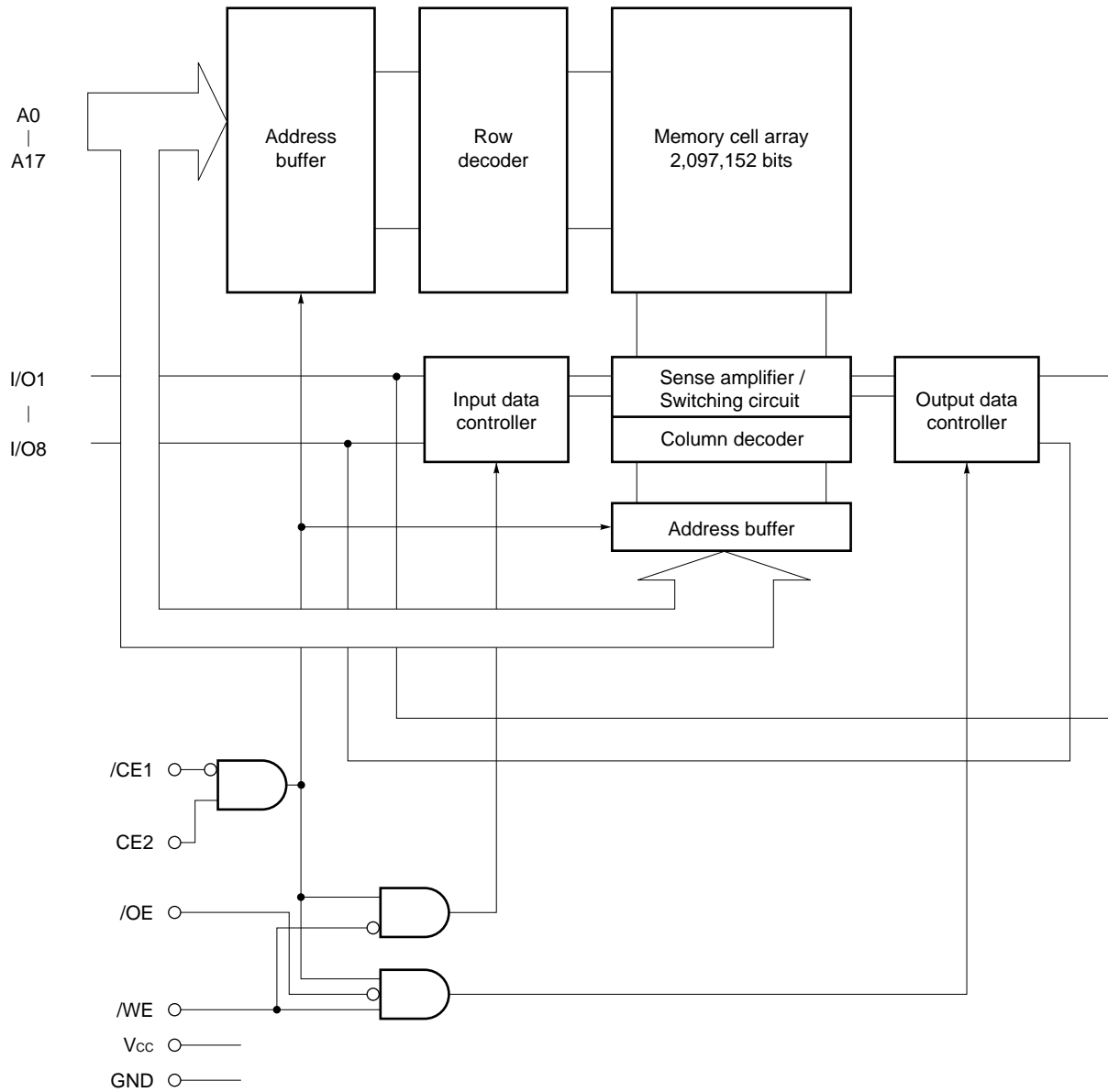
[μPD442000LGZ-DxxX-KKH]



- A0 - A17 : Address inputs
- I/O1 - I/O8 : Data inputs / outputs
- /CE1, CE2 : Chip Enable 1, 2
- /WE : Write Enable
- /OE : Output Enable
- Vcc : Power supply
- GND : Ground

Remark Refer to **Package Drawings** for the 1-pin index mark.

Block Diagram



Truth Table

| /CE1 | CE2 | /OE | /WE | Mode | I/O | Supply current |
|------|-----|-----|-----|----------------|------------------|------------------|
| H | x | x | x | Not selected | High impedance | I _{SB} |
| x | L | x | x | Not selected | High impedance | |
| L | H | H | H | Output disable | High impedance | I _{CCA} |
| L | H | L | H | Read | D _{OUT} | |
| L | H | x | L | Write | D _{IN} | |

Remark x : V_{IH} or V_{IL}

Electrical Specifications

Absolute Maximum Ratings

| Parameter | Symbol | Condition | Rating | Unit |
|-------------------------------|------------------|-----------|--|------|
| Supply voltage | V _{CC} | | -0.5 ^{Note} to +4.6 | V |
| Input / Output voltage | V _T | | -0.5 ^{Note} to V _{CC} +0.5 | V |
| Operating ambient temperature | T _A | | -25 to +85 | °C |
| Storage temperature | T _{stg} | | -55 to +125 | °C |

Note -3.0 V (MIN.) (Pulse width : 30 ns)

Caution Exposing the device to stress above those listed in Absolute Maximum Rating could cause permanent damage. The device is not meant to be operated under conditions outside the limits described in the operational section of this specification. Exposure to Absolute Maximum Rating conditions for extended periods may affect device reliability.

Recommended Operating Conditions

| Parameter | Symbol | Condition | μPD442000L-BxxX | | μPD442000L-CxxX | | μPD442000L-DxxX | | Unit |
|-------------------------------|-----------------|---------------------------------|----------------------|----------------------|----------------------|----------------------|----------------------|----------------------|------|
| | | | MIN. | MAX. | MIN. | MAX. | MIN. | MAX. | |
| Supply voltage | V _{CC} | | 2.7 | 3.6 | 2.2 | 3.6 | 1.8 | 3.6 | V |
| High level input voltage | V _{IH} | 2.7 V ≤ V _{CC} ≤ 3.6 V | 2.4 | V _{CC} +0.5 | 2.4 | V _{CC} +0.5 | 2.4 | V _{CC} +0.5 | V |
| | | 2.2 V ≤ V _{CC} < 2.7 V | - | - | 2.0 | V _{CC} +0.5 | 2.0 | V _{CC} +0.5 | |
| | | 1.8 V ≤ V _{CC} < 2.2 V | - | - | - | - | 1.6 | V _{CC} +0.5 | |
| Low level input voltage | V _{IL} | | -0.3 ^{Note} | +0.5 | -0.3 ^{Note} | +0.3 | -0.3 ^{Note} | +0.2 | V |
| Operating ambient temperature | T _A | | -25 | +85 | -25 | +85 | -25 | +85 | °C |

Note -1.5 V (MIN.) (Pulse width : 30 ns)

Capacitance (T_A = 25 °C, f = 1 MHz)

| Parameter | Symbol | Test condition | MIN. | TYP. | MAX. | Unit |
|----------------------------|------------------|------------------------|------|------|------|------|
| Input capacitance | C _{IN} | V _{IN} = 0 V | | | 8 | pF |
| Input / Output capacitance | C _{I/O} | V _{I/O} = 0 V | | | 10 | pF |

Remarks 1. V_{IN} : Input voltage

V_{I/O} : Input / Output voltage

2. These parameters are periodically sampled and not 100% tested.

DC Characteristics (Recommended Operating Conditions Unless Otherwise Noted)

| Parameter | Symbol | Test condition | μPD442000L-BxxX | | | μPD442000L-CxxX | | | μPD442000L-DxxX | | | Unit |
|---------------------------|-------------------|--|-------------------------|------|------|-----------------|------|------|-----------------|------|------|------|
| | | | MIN. | TYP. | MAX. | MIN. | TYP. | MAX. | MIN. | TYP. | MAX. | |
| Input leakage current | I _{LI} | V _{IN} = 0 V to V _{CC} | -1.0 | | +1.0 | -1.0 | | +1.0 | -1.0 | | +1.0 | μA |
| I/O leakage current | I _{LO} | V _{I/O} = 0 V to V _{CC} , /CE1 = V _{IH} or CE2 = V _{IL} or /WE = V _{IL} or /OE = V _{IH} | -1.0 | | +1.0 | -1.0 | | +1.0 | -1.0 | | +1.0 | μA |
| Operating supply current | I _{CCA1} | /CE1 = V _{IL} , CE2 = V _{IH} , Minimum cycle time, I _{I/O} = 0 mA | V _{CC} ≤ 2.7 V | | 30 | 35 | 25 | 30 | 20 | 25 | mA | |
| | | | V _{CC} ≤ 2.2 V | | - | - | - | - | 10 | 15 | | |
| | | | V _{CC} ≤ 2.2 V | | - | - | - | - | - | - | | |
| | I _{CCA2} | /CE1 = V _{IL} , CE2 = V _{IH} , I _{I/O} = 0 mA | V _{CC} ≤ 2.7 V | | | 10 | | 10 | | 10 | | |
| | | | V _{CC} ≤ 2.2 V | | | - | | 8 | | 8 | | |
| | | | V _{CC} ≤ 2.2 V | | | - | | - | | 5 | | |
| | I _{CCA3} | /CE1 ≤ 0.2 V, CE2 ≥ V _{CC} - 0.2 V, Cycle = 1 MHz, I _{I/O} = 0 mA, V _{IL} ≤ 0.2 V, V _{IH} ≥ V _{CC} - 0.2 V | V _{CC} ≤ 2.7 V | | | 8 | | 8 | | 8 | | |
| | | | V _{CC} ≤ 2.2 V | | | - | | 6 | | 6 | | |
| | | | V _{CC} ≤ 2.2 V | | | - | | - | | 5 | | |
| Standby supply current | I _{SB1} | /CE1 ≥ V _{CC} - 0.2 V, CE2 ≥ V _{CC} - 0.2 V | V _{CC} ≤ 2.7 V | | 0.1 | 2 | 0.1 | 2 | 0.1 | 2 | μA | |
| | | | V _{CC} ≤ 2.2 V | | - | - | - | - | 0.05 | 1.5 | | |
| | | | V _{CC} ≤ 2.2 V | | - | - | - | - | 0.05 | 1.5 | | |
| | I _{SB2} | CE2 ≤ 0.2 V | V _{CC} ≤ 2.7 V | | 0.1 | 2 | 0.1 | 2 | 0.1 | 2 | | |
| | | | V _{CC} ≤ 2.2 V | | - | - | 0.08 | 2 | 0.08 | 2 | | |
| | | | V _{CC} ≤ 2.2 V | | - | - | - | - | 0.05 | 1.5 | | |
| High level output voltage | V _{OH} | I _{OH} = -0.5 mA | V _{CC} ≤ 2.7 V | | 2.4 | | 2.4 | | 2.4 | | V | |
| | | | V _{CC} ≤ 2.2 V | | - | | 1.8 | | 1.8 | | | |
| | | | V _{CC} ≤ 2.2 V | | - | | - | | 1.5 | | | |
| Low level output voltage | V _{OL} | I _{OL} = 1.0 mA | | | 0.4 | | 0.4 | | | 0.4 | V | |

Remarks 1. V_{IN} : Input voltage

V_{I/O} : Input / Output voltage

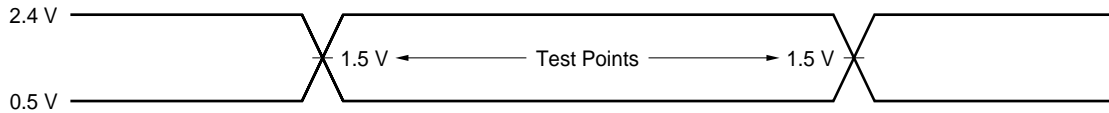
2. These DC characteristics are in common regardless of package types and access time.

AC Characteristics (Recommended Operating Conditions Unless Otherwise Noted)

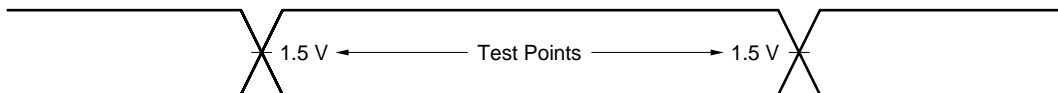
AC Test Conditions

[μPD442000L-B70X, μPD442000L-B85X, μPD442000L-B10X]

Input Waveform (Rise and Fall Time ≤ 5 ns)



Output Waveform

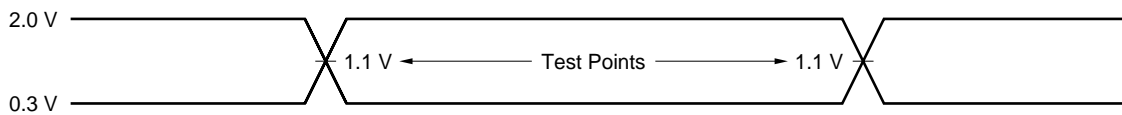


Output Load

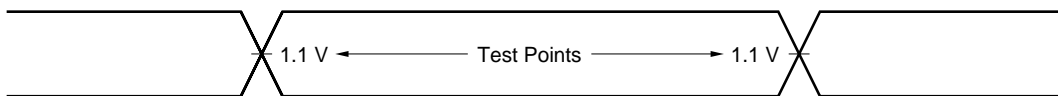
1TTL + 50 pF

[μPD442000L-C10X, μPD442000L-C12X, μPD442000L-C15X]

Input Waveform (Rise and Fall Time ≤ 5 ns)



Output Waveform

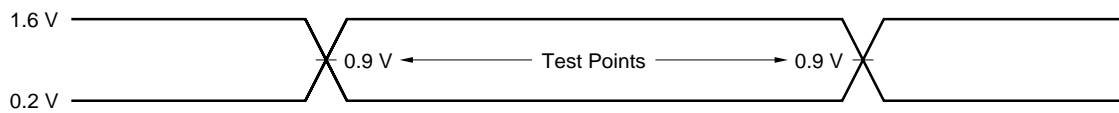


Output Load

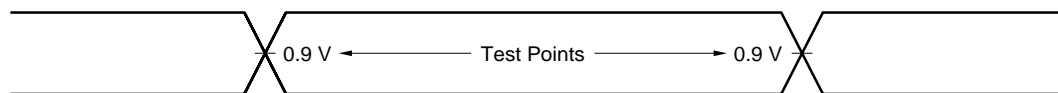
1TTL + 50 pF

★ [μPD442000L-D15X, μPD442000L-D18X]

Input Waveform (Rise and Fall Time ≤ 5 ns)



Output Waveform



Output Load

1TTL + 50 pF

Read Cycle (1/3) (B version)

| Parameter | Symbol | μPD442000L-B70X | | μPD442000L-B85X | | μPD442000L-B10X | | Unit | Condition |
|----------------------------------|------------------|-----------------|------|-----------------|------|-----------------|------|------|---------------|
| | | MIN. | MAX. | MIN. | MAX. | MIN. | MAX. | | |
| Read cycle time | t _{RC} | 70 | | 85 | | 100 | | ns | |
| Address access time | t _{AA} | | 70 | | 85 | | 100 | ns | Note 1 |
| /CE1 access time | t _{CO1} | | 70 | | 85 | | 100 | ns | |
| CE2 access time | t _{CO2} | | 70 | | 85 | | 100 | ns | |
| /OE to output valid | t _{OE} | | 35 | | 40 | | 50 | ns | |
| Output hold from address change | t _{OH} | 10 | | 10 | | 10 | | ns | |
| /CE1 to output in low impedance | t _{LZ1} | 10 | | 10 | | 10 | | ns | Note 2 |
| CE2 to output in low impedance | t _{LZ2} | 10 | | 10 | | 10 | | ns | |
| /OE to output in low impedance | t _{OLZ} | 5 | | 5 | | 5 | | ns | |
| /CE1 to output in high impedance | t _{HZ1} | | 25 | | 30 | | 35 | ns | |
| CE2 to output in high impedance | t _{HZ2} | | 25 | | 30 | | 35 | ns | |
| /OE to output in high impedance | t _{OHZ} | | 25 | | 30 | | 35 | ns | |

- Notes**
1. The output load is 1TTL + 50 pF.
 2. The output load is 1TTL + 5 pF.

Remark These AC characteristics are in common regardless of package types.

Read Cycle (2/3) (C version)

| Parameter | Symbol | μPD442000L-C10X | | μPD442000L-C12X | | μPD442000L-C15X | | Unit | Condition |
|----------------------------------|------------------|-----------------|------|-----------------|------|-----------------|------|------|---------------|
| | | MIN. | MAX. | MIN. | MAX. | MIN. | MAX. | | |
| Read cycle time | t _{RC} | 100 | | 120 | | 150 | | ns | |
| Address access time | t _{AA} | | 100 | | 120 | | 150 | ns | Note 1 |
| /CE1 access time | t _{CO1} | | 100 | | 120 | | 150 | ns | |
| CE2 access time | t _{CO2} | | 100 | | 120 | | 150 | ns | |
| /OE to output valid | t _{OE} | | 50 | | 60 | | 70 | ns | |
| Output hold from address change | t _{OH} | 10 | | 10 | | 10 | | ns | |
| /CE1 to output in low impedance | t _{LZ1} | 10 | | 10 | | 10 | | ns | Note 2 |
| CE2 to output in low impedance | t _{LZ2} | 10 | | 10 | | 10 | | ns | |
| /OE to output in low impedance | t _{OLZ} | 5 | | 5 | | 5 | | ns | |
| /CE1 to output in high impedance | t _{HZ1} | | 35 | | 40 | | 45 | ns | |
| CE2 to output in high impedance | t _{HZ2} | | 35 | | 40 | | 45 | ns | |
| /OE to output in high impedance | t _{OHZ} | | 35 | | 40 | | 45 | ns | |

- Notes**
1. The output load is 1TTL + 50 pF.
 2. The output load is 1TTL + 5 pF.

Remark These AC characteristics are in common regardless of package types.

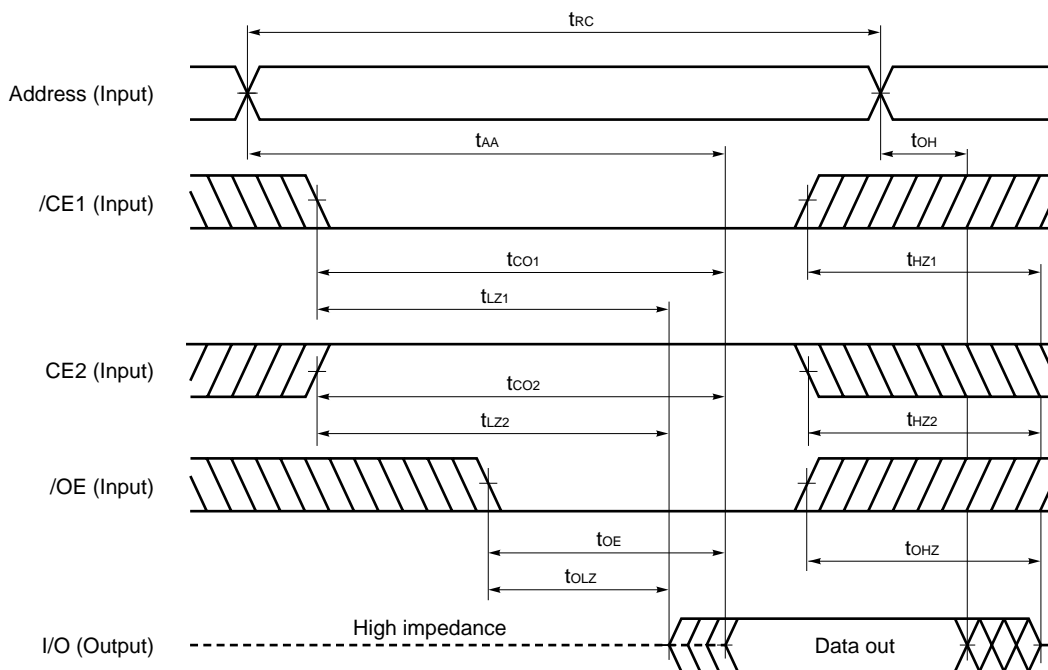
★ Read Cycle (3/3) (D version)

| Parameter | Symbol | μPD442000L-D15X | | μPD442000L-D18X | | Unit | Condition |
|----------------------------------|-----------|-----------------|------|-----------------|------|------|---------------|
| | | MIN. | MAX. | MIN. | MAX. | | |
| Read cycle time | t_{RC} | 150 | | 180 | | ns | |
| Address access time | t_{AA} | | 150 | | 180 | ns | Note 1 |
| /CE1 access time | t_{CO1} | | 150 | | 180 | ns | |
| CE2 access time | t_{CO2} | | 150 | | 180 | ns | |
| /OE to output valid | t_{OE} | | 70 | | 80 | ns | |
| Output hold from address change | t_{OH} | 10 | | 10 | | ns | |
| /CE1 to output in low impedance | t_{LZ1} | 10 | | 10 | | ns | Note 2 |
| CE2 to output in low impedance | t_{LZ2} | 10 | | 10 | | ns | |
| /OE to output in low impedance | t_{OLZ} | 5 | | 5 | | ns | |
| /CE1 to output in high impedance | t_{HZ1} | | 45 | | 50 | ns | |
| CE2 to output in high impedance | t_{HZ2} | | 45 | | 50 | ns | |
| /OE to output in high impedance | t_{OHZ} | | 45 | | 50 | ns | |

- Notes**
1. The output load is 1TTL + 50 pF.
 2. The output load is 1TTL + 5 pF.

Remark These AC characteristics are in common regardless of package types.

Read Cycle Timing Chart



Remark In read cycle, /WE should be fixed to high level.

Write Cycle (1/3) (B version)

| Parameter | Symbol | μPD442000L-B70X | | μPD442000L-B85X | | μPD442000L-B10X | | Unit | Condition |
|---------------------------------|------------------|-----------------|------|-----------------|------|-----------------|------|------|-------------|
| | | MIN. | MAX. | MIN. | MAX. | MIN. | MAX. | | |
| Write cycle time | t _{wc} | 70 | | 85 | | 100 | | ns | |
| /CE1 to end of write | t _{cw1} | 55 | | 70 | | 80 | | ns | |
| CE2 to end of write | t _{cw2} | 55 | | 70 | | 80 | | ns | |
| Address valid to end of write | t _{aw} | 55 | | 70 | | 80 | | ns | |
| Address setup time | t _{as} | 0 | | 0 | | 0 | | ns | |
| Write pulse width | t _{wp} | 50 | | 60 | | 60 | | ns | |
| Write recovery time | t _{wr} | 0 | | 0 | | 0 | | ns | |
| Data valid to end of write | t _{dw} | 30 | | 35 | | 40 | | ns | |
| Data hold time | t _{dh} | 0 | | 0 | | 0 | | ns | |
| /WE to output in high impedance | t _{whz} | | 25 | | 30 | | 35 | ns | Note |
| Output active from end of write | t _{ow} | 5 | | 5 | | 5 | | ns | |

Note The output load is 1TTL + 5 pF.

Remark These AC characteristics are in common regardless of package types.

Write Cycle (2/3) (C version)

| Parameter | Symbol | μPD442000L-C10X | | μPD442000L-C12X | | μPD442000L-C15X | | Unit | Condition |
|---------------------------------|------------------|-----------------|------|-----------------|------|-----------------|------|------|-------------|
| | | MIN. | MAX. | MIN. | MAX. | MIN. | MAX. | | |
| Write cycle time | t _{wc} | 100 | | 120 | | 150 | | ns | |
| /CE1 to end of write | t _{cw1} | 80 | | 100 | | 120 | | ns | |
| CE2 to end of write | t _{cw2} | 80 | | 100 | | 120 | | ns | |
| Address valid to end of write | t _{aw} | 80 | | 100 | | 120 | | ns | |
| Address setup time | t _{as} | 0 | | 0 | | 0 | | ns | |
| Write pulse width | t _{wp} | 60 | | 80 | | 100 | | ns | |
| Write recovery time | t _{wr} | 0 | | 0 | | 0 | | ns | |
| Data valid to end of write | t _{dw} | 40 | | 50 | | 60 | | ns | |
| Data hold time | t _{dh} | 0 | | 0 | | 0 | | ns | |
| /WE to output in high impedance | t _{whz} | | 35 | | 40 | | 50 | ns | Note |
| Output active from end of write | t _{ow} | 5 | | 5 | | 5 | | ns | |

Note The output load is 1TTL + 5 pF.

Remark These AC characteristics are in common regardless of package types.

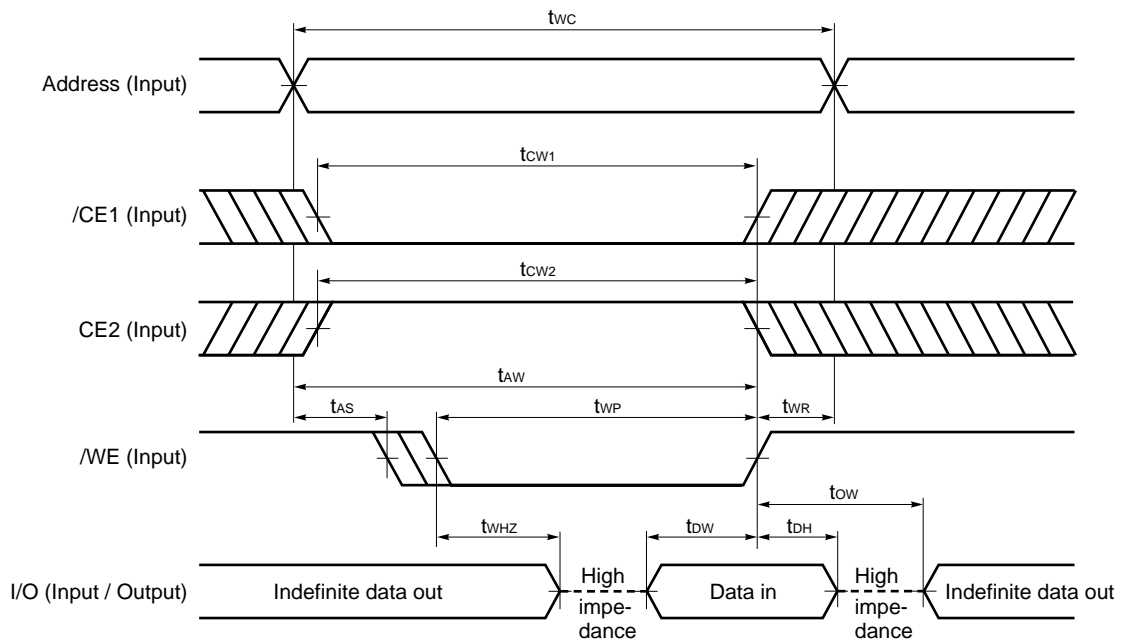
★ Write Cycle (3/3) (D version)

| Parameter | Symbol | μPD442000L-D15X | | μPD442000L-D18X | | Unit | Condition |
|---------------------------------|------------------|-----------------|------|-----------------|------|------|-------------|
| | | MIN. | MAX. | MIN. | MAX. | | |
| Write cycle time | t _{wc} | 150 | | 180 | | ns | |
| /CE1 to end of write | t _{cw1} | 120 | | 150 | | ns | |
| CE2 to end of write | t _{cw2} | 120 | | 150 | | ns | |
| Address valid to end of write | t _{aw} | 120 | | 150 | | ns | |
| Address setup time | t _{as} | 0 | | 0 | | ns | |
| Write pulse width | t _{wp} | 100 | | 120 | | ns | |
| Write recovery time | t _{wr} | 0 | | 0 | | ns | |
| Data valid to end of write | t _{dw} | 60 | | 75 | | ns | |
| Data hold time | t _{dh} | 0 | | 0 | | ns | |
| /WE to output in high impedance | t _{whz} | | 50 | | 60 | ns | Note |
| Output active from end of write | t _{ow} | 5 | | 5 | | ns | |

Note The output load is 1TTL + 5 pF.

Remark These AC characteristics are in common regardless of package types.

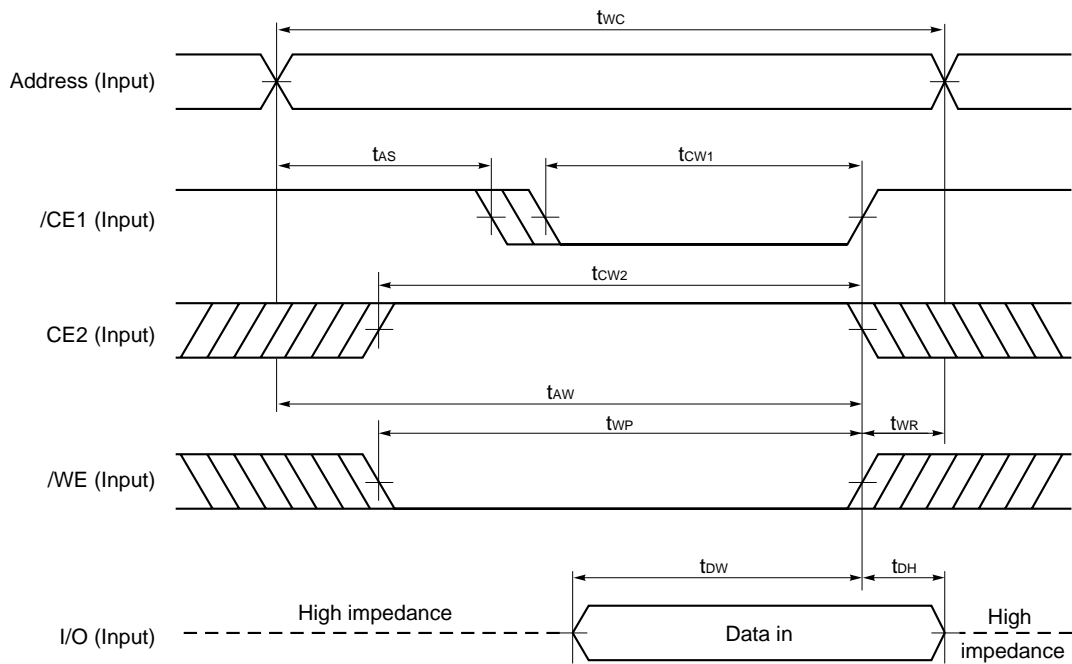
Write Cycle Timing Chart 1 (/WE Controlled)



- Cautions**
1. During address transition, at least one of pins /CE1, CE2, /WE should be inactivated.
 2. When I/O pins are in the output state, do not apply to the I/O pins signals that are opposite in phase with output signals.

- Remarks**
1. Write operation is done during the overlap time of a low level /CE1, /WE, and a high level CE2.
 2. If /CE1 changes to low level at the same time or after the change of /WE to low level, or if CE2 changes to high level at the same time or after the change of /WE to low level, the I/O pins will remain high impedance state.
 3. When /WE is at low level, the I/O pins are always high impedance. When /WE is at high level, read operation is executed. Therefore /OE should be at high level to make the I/O pins high impedance.

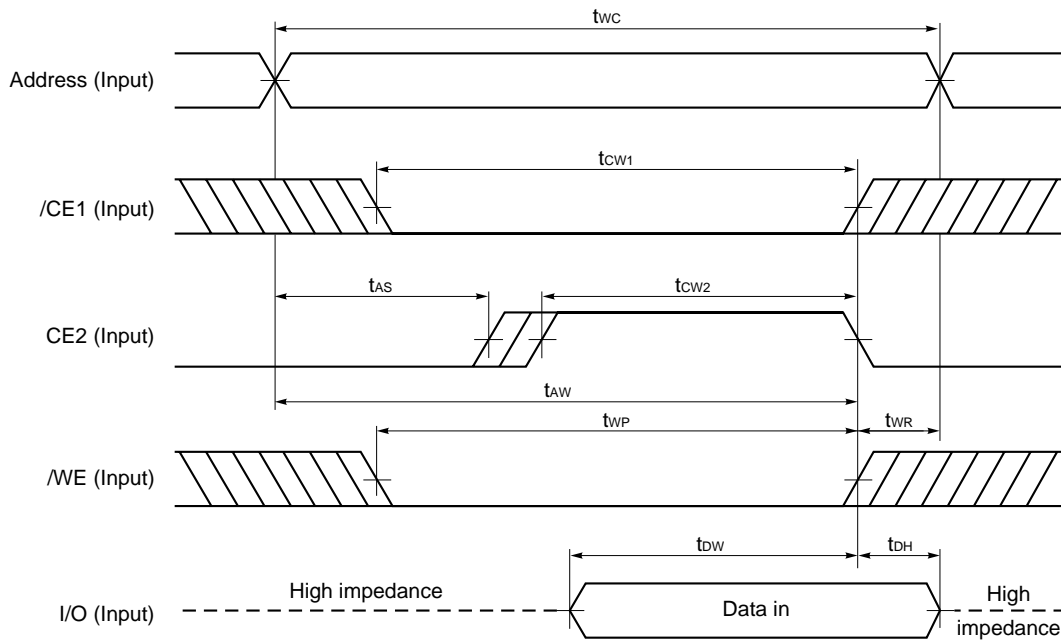
Write Cycle Timing Chart 2 (/CE1 Controlled)



- Cautions**
1. During address transition, at least one of pins /CE1, CE2, /WE should be inactivated.
 2. When I/O pins are in the output state, do not apply to the I/O pins signals that are opposite in phase with output signals.

Remark Write operation is done during the overlap time of a low level /CE1, /WE, and a high level CE2.

Write Cycle Timing Chart 3 (CE2 Controlled)



- Cautions**
1. During address transition, at least one of pins /CE1, CE2, /WE should be inactivated.
 2. When I/O pins are in the output state, do not apply to the I/O pins signals that are opposite in phase with output signals.

Remark Write operation is done during the overlap time of a low level /CE1, /WE, and a high level CE2.

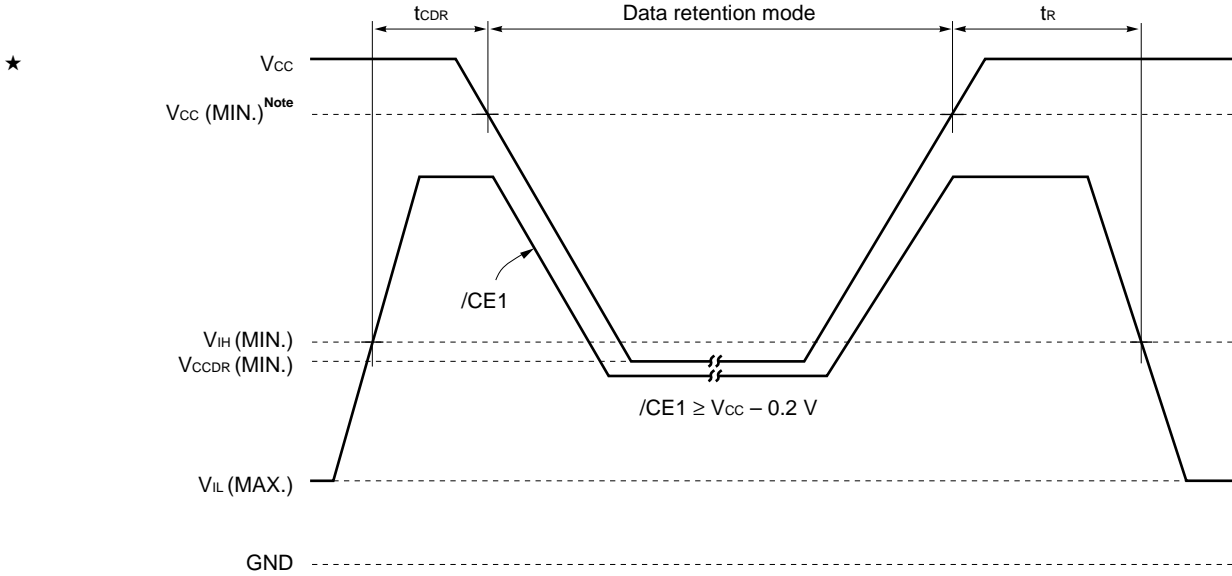
Low V_{CC} Data Retention Characteristics (T_A = -25 to +85 °C)

| Parameter | Symbol | Test Condition | MIN. | TYP. | MAX. | Unit |
|---|--------------------|--|---------------------------------|------|------|------|
| Data retention supply voltage | V _{CCDR1} | /CE1 ≥ V _{CC} - 0.2 V, CE2 ≥ V _{CC} - 0.2 V | 1.5 | | 3.6 | V |
| | V _{CCDR2} | CE2 ≤ 0.2 V | 1.5 | | 3.6 | |
| Data retention supply current | I _{CCDR1} | V _{CC} = 3.0 V, /CE1 ≥ V _{CC} - 0.2 V, CE2 ≥ V _{CC} - 0.2 V or CE2 ≤ 0.2 V | | 0.1 | 2 | μA |
| | I _{CCDR2} | V _{CC} = 3.0 V, CE2 ≤ 0.2 V | | 0.1 | 2 | |
| Chip deselection to data retention mode | t _{CDR} | | 0 | | | ns |
| Operation recovery time | t _R | | t _{RC} ^{Note} | | | ns |

Note t_{RC} : Read cycle time.

Data Retention Timing Chart

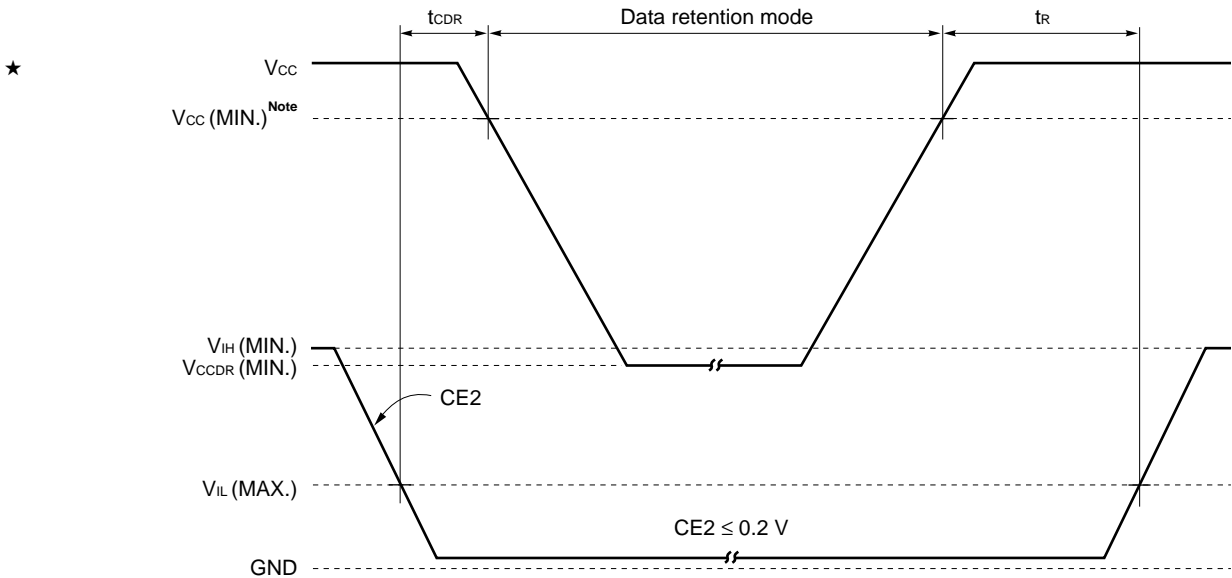
(1) /CE1 Controlled



Note B version : 2.7 V, C version : 2.2 V, D version : 1.8 V

Remark On the data retention mode by controlling /CE1, the input level of CE2 must be $\geq V_{CC} - 0.2 V$ or $\leq 0.2 V$.
The other pins (Address, I/O, /WE, /OE) can be in high impedance state.

(2) CE2 Controlled

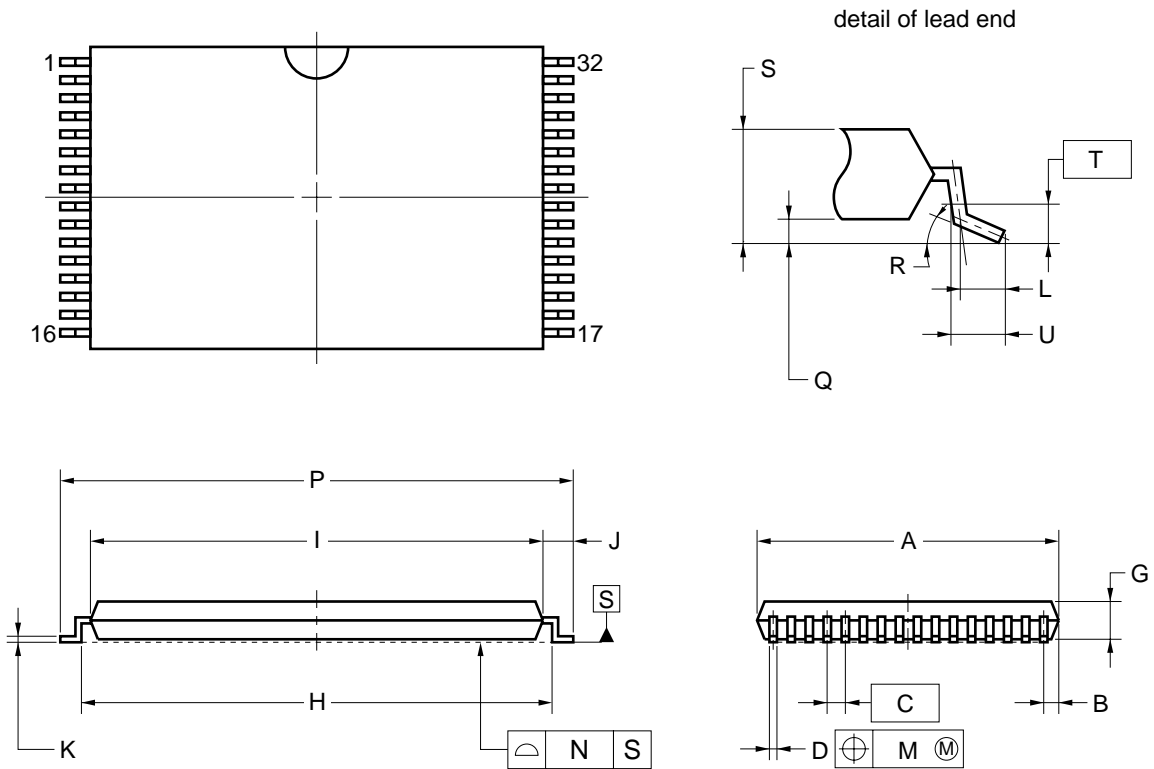


Note B version : 2.7 V, C version : 2.2 V, D version : 1.8 V

Remark On the data retention mode by controlling CE2, the other pins (/CE1, Address, I/O, /WE, /OE) can be in high impedance state.

Package Drawings

★ 32-PIN PLASTIC TSOP(I) (8x13.4)



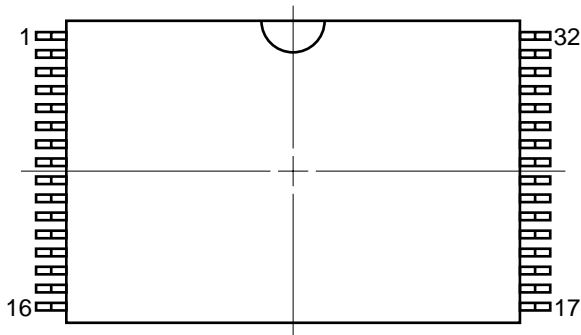
NOTES

1. Each lead centerline is located within 0.08 mm of its true position (T.P.) at maximum material condition.
2. "A" excludes mold flash. (Includes mold flash : 8.3 mm MAX.)

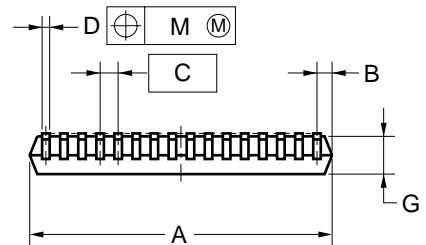
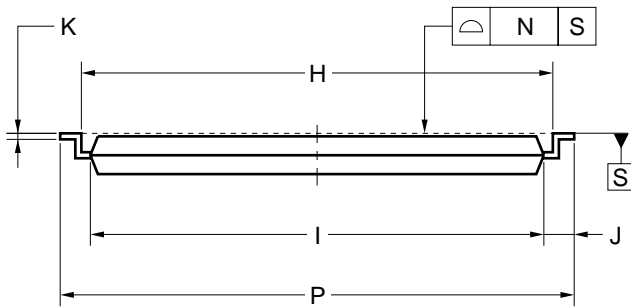
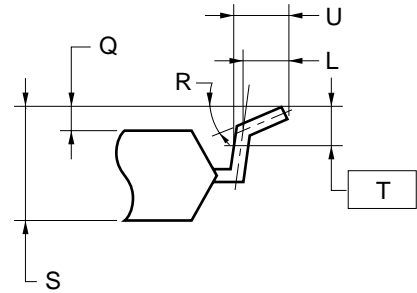
| ITEM | MILLIMETERS |
|------|---|
| A | 8.0±0.1 |
| B | 0.45 MAX. |
| C | 0.5 (T.P.) |
| D | 0.22±0.05 |
| G | 1.0±0.05 |
| H | 12.4±0.2 |
| I | 11.8±0.1 |
| J | 0.8±0.2 |
| K | 0.145 ^{+0.025} _{-0.015} |
| L | 0.5 |
| M | 0.08 |
| N | 0.08 |
| P | 13.4±0.2 |
| Q | 0.1±0.05 |
| R | 3° ^{+5°} _{-3°} |
| S | 1.2 MAX. |
| T | 0.25 |
| U | 0.6±0.15 |

P32GU-50-9JH-2

★ 32-PIN PLASTIC TSOP(I) (8x13.4)



detail of lead end



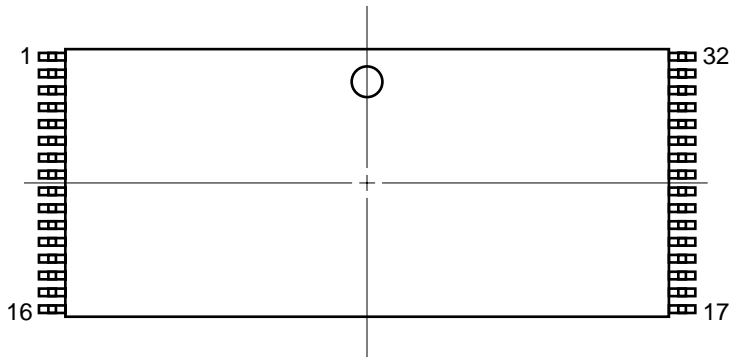
NOTES

1. Each lead centerline is located within 0.08 mm of its true position (T.P.) at maximum material condition.
2. "A" excludes mold flash. (Includes mold flash : 8.3 mm MAX.)

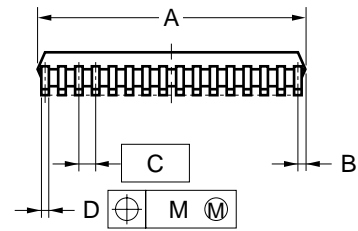
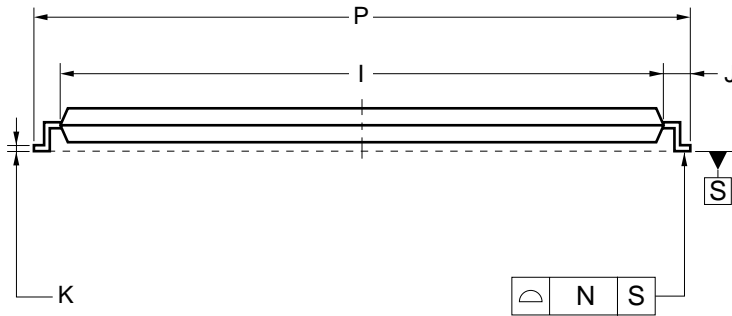
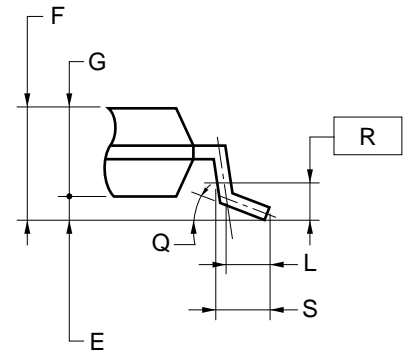
| ITEM | MILLIMETERS |
|------|---|
| A | 8.0±0.1 |
| B | 0.45 MAX. |
| C | 0.5 (T.P.) |
| D | 0.22±0.05 |
| G | 1.0±0.05 |
| H | 12.4±0.2 |
| I | 11.8±0.1 |
| J | 0.8±0.2 |
| K | 0.145 ^{+0.025} _{-0.015} |
| L | 0.5 |
| M | 0.08 |
| N | 0.08 |
| P | 13.4±0.2 |
| Q | 0.1±0.05 |
| R | 3° ^{+5°} _{-3°} |
| S | 1.2 MAX. |
| T | 0.25 |
| U | 0.6±0.15 |

P32GU-50-9KH-2

★ 32-PIN PLASTIC TSOP(I) (8x20)



detail of lead end



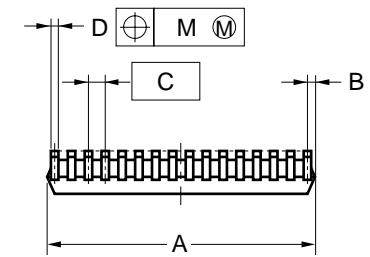
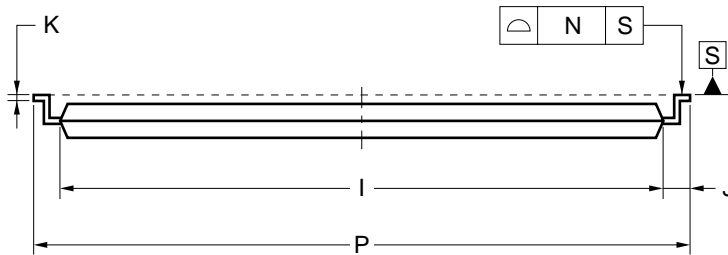
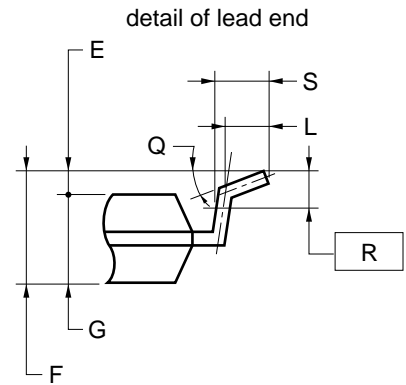
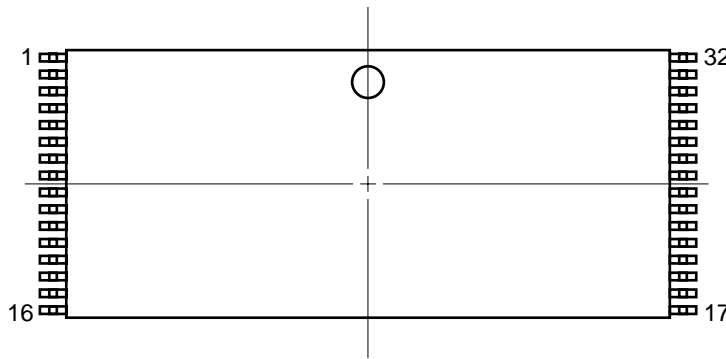
NOTES

1. Each lead centerline is located within 0.10 mm of its true position (T.P.) at maximum material condition.
2. "A" excludes mold flash. (Includes mold flash : 8.3 mm MAX.)

| ITEM | MILLIMETERS |
|------|---------------------------------|
| A | 8.0±0.1 |
| B | 0.45 MAX. |
| C | 0.5 (T.P.) |
| D | 0.22±0.05 |
| E | 0.1±0.05 |
| F | 1.2 MAX. |
| G | 0.97±0.08 |
| I | 18.4±0.1 |
| J | 0.8±0.2 |
| K | 0.145±0.05 |
| L | 0.5 |
| M | 0.10 |
| N | 0.10 |
| P | 20.0±0.2 |
| Q | 3 ^{+5°} _{-3°} |
| R | 0.25 |
| S | 0.60±0.15 |

S32GZ-50-KJH1-2

★ 32-PIN PLASTIC TSOP(I) (8x20)



NOTES

1. Each lead centerline is located within 0.10 mm of its true position (T.P.) at maximum material condition.
2. "A" excludes mold flash. (Includes mold flash : 8.3 mm MAX.)

| ITEM | MILLIMETERS |
|------|----------------------------------|
| A | 8.0±0.1 |
| B | 0.45 MAX. |
| C | 0.5 (T.P.) |
| D | 0.22±0.05 |
| E | 0.1±0.05 |
| F | 1.2 MAX. |
| G | 0.97±0.08 |
| I | 18.4±0.1 |
| J | 0.8±0.2 |
| K | 0.145±0.05 |
| L | 0.5 |
| M | 0.10 |
| N | 0.10 |
| P | 20.0±0.2 |
| Q | 3° ^{+5°} _{-3°} |
| R | 0.25 |
| S | 0.60±0.15 |

S32GZ-50-KKH1-2

Recommended Soldering Conditions

Please consult with our sales offices for soldering conditions of the μ PD442000L-X.

★ Types of Surface Mount Device

| | |
|----------------------------|---|
| μ PD442000LGU-BxxX-9JH | : 32-pin Plastic TSOP (I) (8×13.4) (Normal bent) |
| μ PD442000LGU-CxxX-9JH | : 32-pin Plastic TSOP (I) (8×13.4) (Normal bent) |
| μ PD442000LGU-DxxX-9JH | : 32-pin Plastic TSOP (I) (8×13.4) (Normal bent) |
| μ PD442000LGU-BxxX-9KH | : 32-pin Plastic TSOP (I) (8×13.4) (Reverse bent) |
| μ PD442000LGU-CxxX-9KH | : 32-pin Plastic TSOP (I) (8×13.4) (Reverse bent) |
| μ PD442000LGU-DxxX-9KH | : 32-pin Plastic TSOP (I) (8×13.4) (Reverse bent) |
| μ PD442000LGZ-BxxX-KJH | : 32-pin Plastic TSOP (I) (8×20) (Normal bent) |
| μ PD442000LGZ-CxxX-KJH | : 32-pin Plastic TSOP (I) (8×20) (Normal bent) |
| μ PD442000LGZ-DxxX-KJH | : 32-pin Plastic TSOP (I) (8×20) (Normal bent) |
| μ PD442000LGZ-BxxX-KKH | : 32-pin Plastic TSOP (I) (8×20) (Reverse bent) |
| μ PD442000LGZ-CxxX-KKH | : 32-pin Plastic TSOP (I) (8×20) (Reverse bent) |
| μ PD442000LGZ-DxxX-KKH | : 32-pin Plastic TSOP (I) (8×20) (Reverse bent) |

NOTES FOR CMOS DEVICES**① PRECAUTION AGAINST ESD FOR SEMICONDUCTORS**

Note:

Strong electric field, when exposed to a MOS device, can cause destruction of the gate oxide and ultimately degrade the device operation. Steps must be taken to stop generation of static electricity as much as possible, and quickly dissipate it once, when it has occurred. Environmental control must be adequate. When it is dry, humidifier should be used. It is recommended to avoid using insulators that easily build static electricity. Semiconductor devices must be stored and transported in an anti-static container, static shielding bag or conductive material. All test and measurement tools including work bench and floor should be grounded. The operator should be grounded using wrist strap. Semiconductor devices must not be touched with bare hands. Similar precautions need to be taken for PW boards with semiconductor devices on it.

② HANDLING OF UNUSED INPUT PINS FOR CMOS

Note:

No connection for CMOS device inputs can be cause of malfunction. If no connection is provided to the input pins, it is possible that an internal input level may be generated due to noise, etc., hence causing malfunction. CMOS devices behave differently than Bipolar or NMOS devices. Input levels of CMOS devices must be fixed high or low by using a pull-up or pull-down circuitry. Each unused pin should be connected to V_{DD} or GND with a resistor, if it is considered to have a possibility of being an output pin. All handling related to the unused pins must be judged device by device and related specifications governing the devices.

③ STATUS BEFORE INITIALIZATION OF MOS DEVICES

Note:

Power-on does not necessarily define initial status of MOS device. Production process of MOS does not define the initial operation status of the device. Immediately after the power source is turned ON, the devices with reset function have not yet been initialized. Hence, power-on does not guarantee out-pin levels, I/O settings or contents of registers. Device is not initialized until the reset signal is received. Reset operation must be executed immediately after power-on for devices having reset function.

- **The information in this document is current as of December, 2000. The information is subject to change without notice. For actual design-in, refer to the latest publications of NEC's data sheets or data books, etc., for the most up-to-date specifications of NEC semiconductor products. Not all products and/or types are available in every country. Please check with an NEC sales representative for availability and additional information.**
 - No part of this document may be copied or reproduced in any form or by any means without prior written consent of NEC. NEC assumes no responsibility for any errors that may appear in this document.
 - NEC does not assume any liability for infringement of patents, copyrights or other intellectual property rights of third parties by or arising from the use of NEC semiconductor products listed in this document or any other liability arising from the use of such products. No license, express, implied or otherwise, is granted under any patents, copyrights or other intellectual property rights of NEC or others.
 - Descriptions of circuits, software and other related information in this document are provided for illustrative purposes in semiconductor product operation and application examples. The incorporation of these circuits, software and information in the design of customer's equipment shall be done under the full responsibility of customer. NEC assumes no responsibility for any losses incurred by customers or third parties arising from the use of these circuits, software and information.
 - While NEC endeavours to enhance the quality, reliability and safety of NEC semiconductor products, customers agree and acknowledge that the possibility of defects thereof cannot be eliminated entirely. To minimize risks of damage to property or injury (including death) to persons arising from defects in NEC semiconductor products, customers must incorporate sufficient safety measures in their design, such as redundancy, fire-containment, and anti-failure features.
 - NEC semiconductor products are classified into the following three quality grades:
"Standard", "Special" and "Specific". The "Specific" quality grade applies only to semiconductor products developed based on a customer-designated "quality assurance program" for a specific application. The recommended applications of a semiconductor product depend on its quality grade, as indicated below. Customers must check the quality grade of each semiconductor product before using it in a particular application.
"Standard": Computers, office equipment, communications equipment, test and measurement equipment, audio and visual equipment, home electronic appliances, machine tools, personal electronic equipment and industrial robots
"Special": Transportation equipment (automobiles, trains, ships, etc.), traffic control systems, anti-disaster systems, anti-crime systems, safety equipment and medical equipment (not specifically designed for life support)
"Specific": Aircraft, aerospace equipment, submersible repeaters, nuclear reactor control systems, life support systems and medical equipment for life support, etc.
- The quality grade of NEC semiconductor products is "Standard" unless otherwise expressly specified in NEC's data sheets or data books, etc. If customers wish to use NEC semiconductor products in applications not intended by NEC, they must contact an NEC sales representative in advance to determine NEC's willingness to support a given application.
- (Note)
- (1) "NEC" as used in this statement means NEC Corporation and also includes its majority-owned subsidiaries.
 - (2) "NEC semiconductor products" means any semiconductor product developed or manufactured by or for NEC (as defined above).