

# Monolithic crystal filter

## MQF19.5-1200/03



### Application

- 6 pol filter
- i.f.- filter
- use in mobile and stationary transceivers

### Limiting values

		Unit	Value
Center frequency	$f_0$	MHz	$19.5 \pm 600$ Hz
Insertion loss		dB	$\leq 3.0$
Pass band at 3.0 dB		kHz	$\pm 6.00$
Ripple in pass band	$f_0 \pm 4.80$ kHz	dB	$\leq 1.0$
Stop band attenuation	$f_0 \pm 25$ kHz	dB	$\geq 50$
Stopband attenuation	$f_0 \pm 200$ kHz	dB	$> 80$
Alternate attenuation	$f_0 \pm 0.2..80$ MHz	dB	$> 60$ except spurious
IMD at input level -10dBm	$f_0+200$ kHz, $f_0+400$ kHz	dB	$> 85$
Reflection loss	$f_0 \pm 4.8$ kHz	dB	$> 9.5$

### Terminating impedance Z

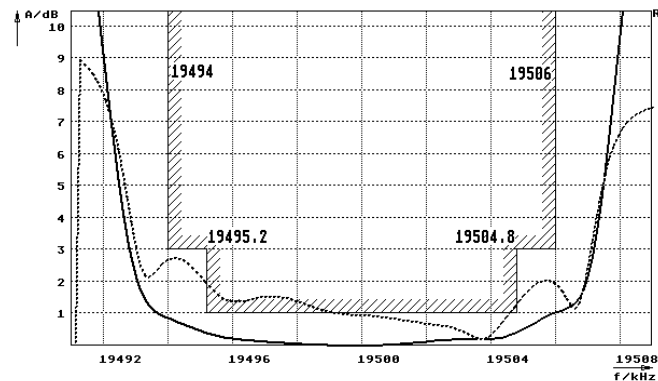
R1    C1	Ohm/pF	50    0
R2    C2	Ohm/pF	50    0

### Operating temp. range

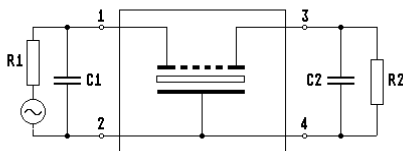
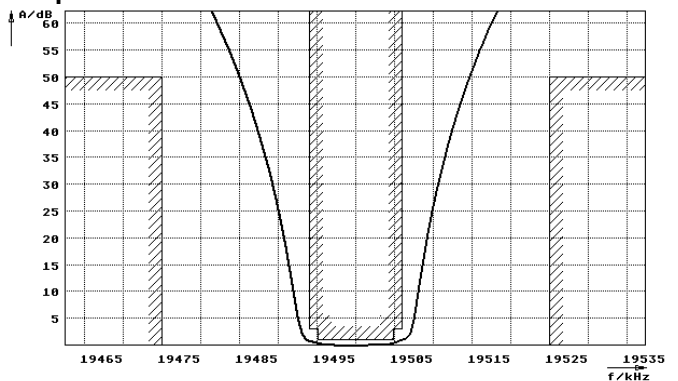
° C -20... +50

### Characteristics MQF19.5-1200/03

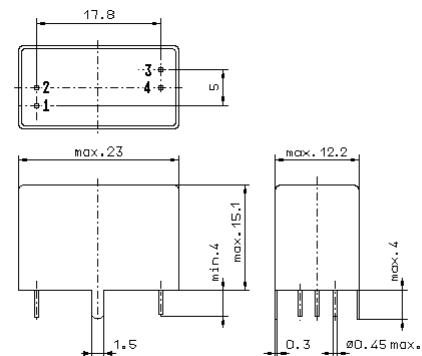
#### Pass band



#### Stop band



- Pin connections:
- 1 Input
  - 2 Ground-Input
  - 3 Output
  - 4 Ground-Output



GV6.2