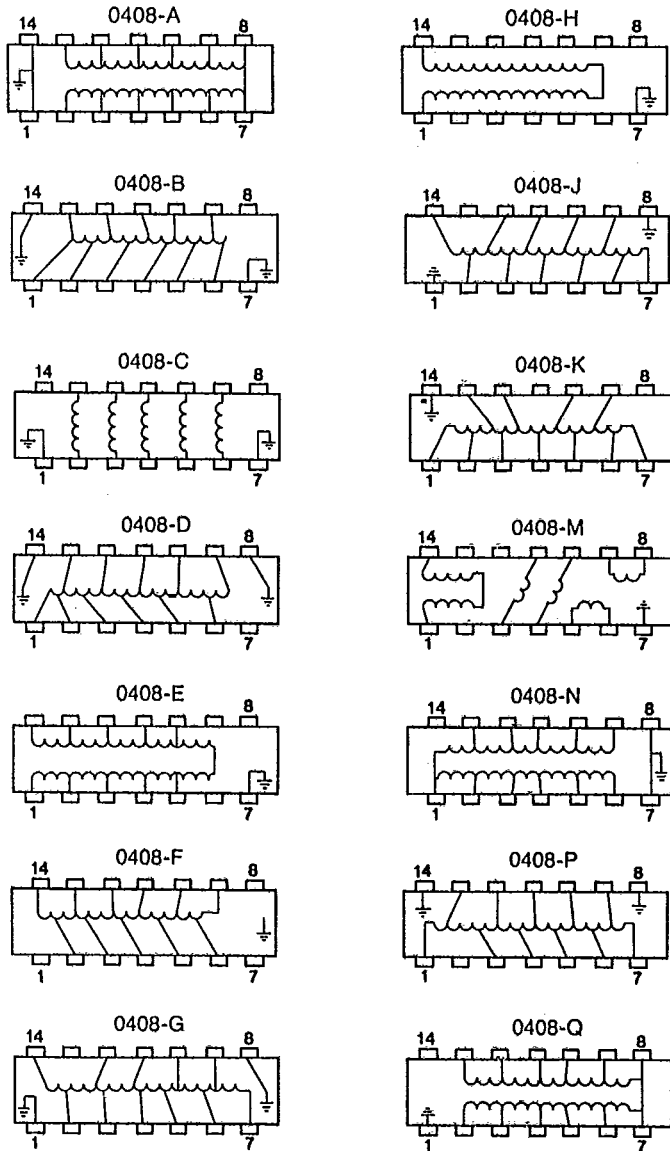
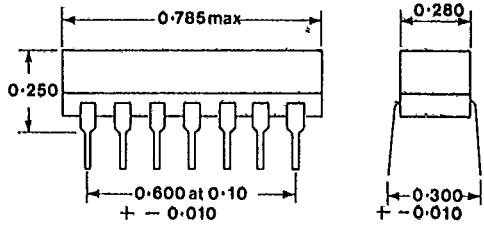


# ANALOG PASSIVE DELAY LINES

B-47-17

T-47-13



Detail	Total Delay (ns)	Impedance (ohms)	Tap Delay (ns)
1	100	100	10
2	200	100	20
3	50	100	5
4	40	100	4
5	30	100	3
6	150	75	15
7	75	75	7.5
8	60	75	6
9	25	75	2.5
10	10	100	1
11	20	100	2
12	250	100	25
13	300	100	30
14	50	500	5
15	100	500	10
16	150	500	15
17	100	200	10
18	150	200	15
19	200	200	20
20	300	200	30
21	50	50	5
22	100	50	10
23	150	50	15
24	9.5	75	-
25	100	75	-
26	155	75	-
27	150	100	15
28	175	100	17.5
29	500	100	50
30	30	100	3
31	200	500	20
32	300	500	30
33	400	500	40
34	125	100	12.5
35	200	500	20
36	20	500	2
37	500	500	50
38	100	150	10
39	250	500	25
40	200	75	20
41	25	200	2.5

## GENERAL SPECIFICATIONS

Operating Temperature	-55°C to + 125°C
Storage Temperature	-65°C to + 135°C
Temperature Coefficient	Approx. ±100 ppm/°C
Operating Voltage	30 volt DC maximum
Insulating Resistance	100 megohms at 100 volts DC
Distortion	10% maximum at Total Delay
Delay Tolerance	5%
Impedance Tolerance	10%

## HOW TO ORDER

Model Number **0408**

Fill in blanks above for your choice of:

Connection Layout (A through Q) ↑  
 Total Delay / Impedance / ↑  
 Tap Delay ..... (Detail # from chart)

Other tolerances, delays, impedances available upon request.