

CHOKE

Power Chokes

8628-XXX

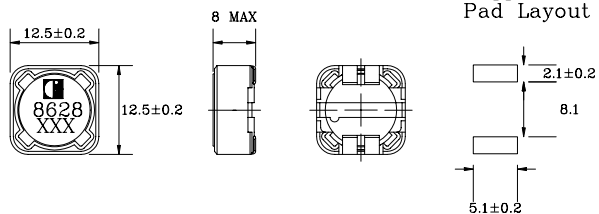


The 8628 series of SMD chokes is designed to cover an inductance range from 1.20µH to 470µH with rated saturation currents from 2.50A to 9.80A. These are ideally suited for applications where shielding is required.

- DC/DC converters
- LCD displays
- PDA Palm Tops
- Telecommunication equipment etc.



Mechanical (All dimensions in millimeters)



ELECTRICAL SPECIFICATION @ 25°C

Part Number	Inductance (µH)	DCR (Ω MAX)	Rated DC Current (A)	Part Number	Inductance (µH)	DCR (Ω MAX)	Rated DC Current (A)
8628-12A	1.2	7.0m	9.80	8628-59B	59	72.9m	2.75
8628-24A	2.4	11.5m	8.00	8628-47B	47	0.10	2.50
8628-35A	3.5	1.35m	7.50	8628-56B	56	0.80	
8628-47A	4.7	15.8m	6.80	8628-68B	68	0.76	
8628-61A	6.1	17.6m	6.60	8628-82B	82	0.66	
8628-76A	7.6	20.0m	5.90	8628-10C	100	0.61	
8628-10B	10	21.6m	5.40	8628-12C	120	0.56	
8628-12B	12	24.3m	4.90	8628-15C	150	0.49	
8628-15B	15	27.0m	4.50	8628-18C	180	0.45	
8628-18B	18	39.2m	3.90	8628-22C	220	0.43	
8628-22B	22	43.2m	3.60	8628-27C	270	0.37	
8628-27B	27	45.9m	3.40	8628-33C	330	0.34	
8628-33B	33	64.8m	3.00	8628-39C	390	0.31	
				8628-47C	470	0.29	