



ANZAC RF & CELLULAR COMPONENTS

## Low Cost Frequency Mixers

### LEVEL 23 (+23 dBm LO, up to +15 dBm RF)

MODEL NO.	FREQUENCY MHz		CONVERSION LOSS dB		LO-RF ISOLATION dB			LO-IF ISOLATION dB			CASE	PIN OUT	UNIT PRICE (\$) (1 - 9)								
	LO/RF	IF	Mid-Band	Total Range	L	M	U	L	M	U											
	FL-Fu		Typ.	Max.	Typ.	Min	Typ.	Min	Typ.	Min											
EMR-1	5.0 - 500	DC - 500	6.0	7.5	7.5	8.5	55	45	40	30	30	25	55	45	40	30	30	20	R1	3	40.75
EMR-2	10.0 - 1000	DC - 1000	7.0	8.5	8.5	10.0	50	35	40	30	35	25	50	35	35	25	25	20	R2	6	64.30
EMR-3	0.07 - 200	DC - 200	6.0	7.5	6.5	8.0	55	45	40	30	30	25	55	45	40	30	30	20	R1	3	40.75

### LEVEL 23S (+23 dBm LO, up to +20 dBm RF)

EBY-1	0.1 - 500	0.01 - 500	5.3	6.0	5.3	7.5	40	20	46	35	40	30	37	23	46	35	40	30	R1	7	62.75
EBY-2	0.1 - 1000	0.01 - 500	5.3	7.5	7.5	9.5	40	20	40	30	30	25	37	23	40	25	25	20	R1	7	67.75

L = Low Range (FL - 10FL)

M = Mid Range (10FL - Fu/2)

m = Mid Band (2FL - Fu/2)

U = Upper Range (Fu/2 - Fu)

## Bias Controlled Mixers

### 1.4 to 60 dB

EAS-1	5 - 450	DC - 0.05	3.5	4.0	3.5	4.7	65	50	45	35	35	25	35	25	25	15	20	10	R1	1	33.75
EAS-2	10 - 1000	DC - 0.05	4.0	6.0	6.5	8.5	50	40	40	30	35	25	30	20	17	10	17	10	R1	2	47.75
EAS-3	1 - 200	DC - 0.05	1.4	2.0	1.6	2.5	65	50	50	40	50	35	35	25	20	10	15	10	R1	1	34.75

### PIN OUT TABLE - ELECTRONIC ATTENUATORS / SWITCHES

PIN OUT NO.	OUT	IN	CONTROL	GROUND	CASE GROUND
1	8	1	3,4*	2,5,6,7	2
2	8	1	3,4*	2,5,6,7	2,5,6,7

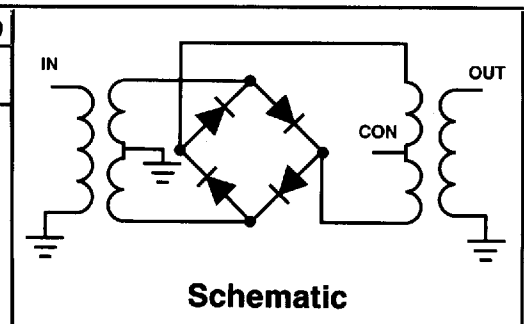
\*Pins must be connected together externally

CASE STYLE: R = RELAY HEADER; SM = SURFACE MOUNT;  
C = CONNECTORIZED

PRICES AND SPECIFICATIONS SUBJECT TO CHANGE WITHOUT NOTICE

#### NOTES:

- For quality and environmental specifications, see page 22.
- Absolute maximum ratings:  
Maximum RF input power: 1 Watt, no damage, 100 mW  
(for level 23 and 23S)  
Maximum control current: 20 mA (for electronic attenuators/switches)  
Operating and storage temperature: -55°C to +100°C  
Pin temperature (10s): +260°C



**Immediate Delivery from Stock**