

FEATURES

- Cispr 22'B', Vcci'B', Fcc'B' Compliance
- Light Weight: 210g only
- Efficiency 69%~81%
- Over-Voltage Protective Installation
- Short-circuit Protective Installation
- Protection Type: Auto-Recover
- Operating Temperature 0°C~40°C



SPECIFICATION

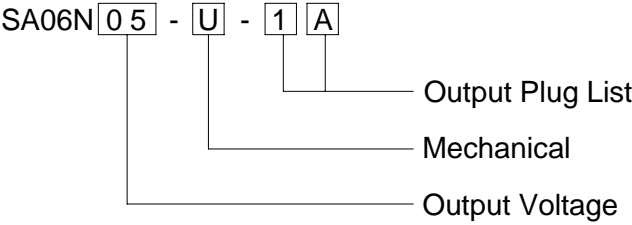
Item \ Model	SA06N3V3	SA06N05	SA06N06	SA06N09	SA06N12
Output Voltage	3.3V	5V	6V	9V	12V
Output Current	4.0A	4.0A	3.0A	2.0A	2.0A
Input Voltage	AC 90~264V				
Input Frequency	47~63Hz				
Input Current	0.8A Maximum				
Inrush Current	40A Maximum				
Line Regulation	2% Maximum				
Load Regulation	± 5%				
Ripple & Noise	1% Maximum				
Efficiency	69% Typical	74% Typical	75% Typical	78% Typical	81% Typical
Temperature Coefficient	0.05%/°C				
Over-Voltage Protection	7V Maximum	10V Maximum	12V Maximum	18V Maximum	24V Maximum
Operating Temperature	0~40°C				
Storage Temperature	-20~85°C				
Safety Description	Fig. A	UL, CUL, CB, BSMI, CE, PSE	UL, CUL, CB, LPS, BSMI, CE, PSE		
	Fig. U	UL, CUL, TUV, CB, BSMI, CE, PSE	UL, CUL, TUV, CB, LPS, BSMI, CE, PSE		
	Fig. V	UL, CUL, TUV, CB, BSMI, CE	UL, CUL, TUV, CB, LPS, BSMI, CE		UL, CUL, TUV, CB, LPS, BSMI, CE, PSE
	Fig. W				

(*): Under Development (I/P): In Process

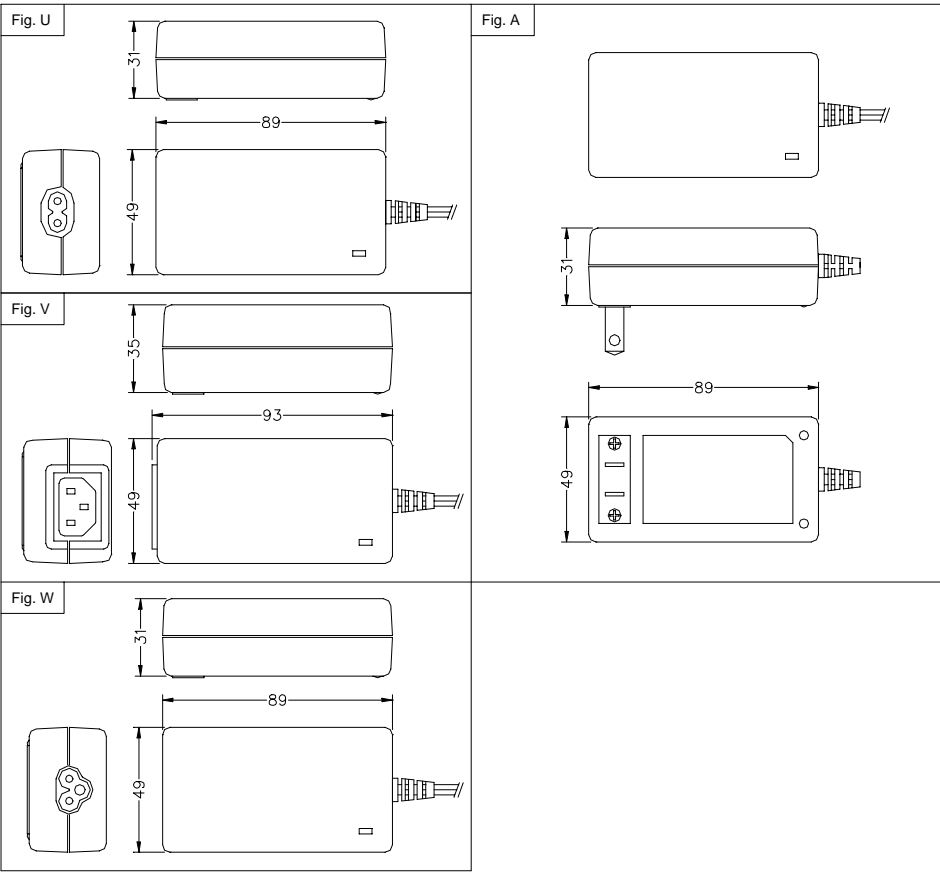
Bothhand USA. e-mail: sales@bothhandusa.com <http://www.bothhand.com>

462 Boston St - Topsfield, MA 01983 - Phone: 978-887-8050 - Fax: 978-887-5434

ORDERING INFORMATION



MECHANICAL



Unit: m.m.

Standard Output Cable:
3.3V~7V: 18AWG, UL SPT-1, 1200mm, EMI Core.
8V~12V: 20AWG, UL 2468, 1800mm, EMI Core



Bothhand USA. e-mail: sales@bothhandusa.com <http://www.bothhand.com>

462 Boston St - Topsfield, MA 01983 - Phone: 978-887-8050 - Fax: 978-887-5434