

Valve Tags : Prenumbered

For price information, see enclosed pricelist

Brass valve tags: prenumbered

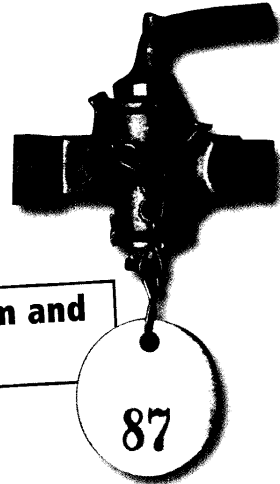
These tags are circular and have already preprinted numbers on them. Recommended for general purpose valve identification.

Size: Diameter of tag: 38 mm

Holesize: Diameter of 5 mm

Standard package: 25 pieces

Identify valves in a uniform and professional way.

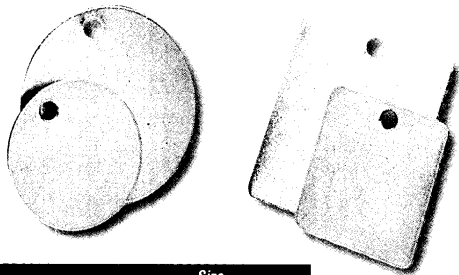


<i>Numbers</i>	1-25	26-50	51-75	76-100	101-125	126-150	151-175	176-200	201-225	226-250
<i>Partnumber</i>	023200	023201	023202	023203	023204	023205	023206	023207	023208	023209
<i>Numbers</i>	251-275	276-300	301-325	326-350	351-375	376-400	401-425	426-450	451-475	476-500
<i>Partnumber</i>	023617	023618	023619	023620	023621	023622	023623	023624	023625	023626

Brass valve tags: blank

Put your own identification or marking on these blank valve tags. They can be stamped or engraved at the jobsite.

Standard package : 25 pieces



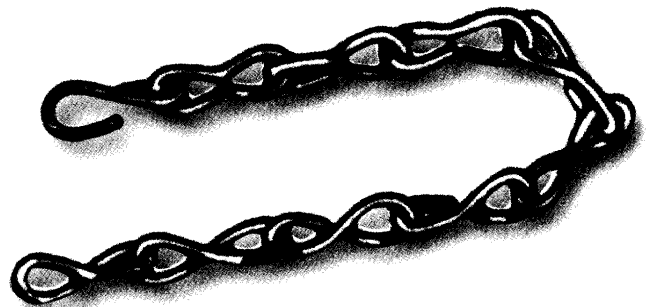
Square

<i>Partnumber</i>	<i>Size</i>
023212	38 x 38 mm
023213	50 x 50 mm

Round

<i>Partnumber</i>	<i>Size</i>
023210	38 mm
023211	50 mm

Attachment chains for Valve tags



Brass chain

Easily adjustable in length

Approximately 25 shackles / 30 cm

Standard package: 15 m

Partnumber 023308

i Lockout/Tagout: What is it?

Lockout/Tagout is a way to prevent energy (mechanical, electrical, hydraulic etc.) to be released in an uncontrolled way. A decent lockout procedure prevents machinery or equipment being set in motion.

Brady offers you a complete programme of Lockout devices for equipment and fittings, valves, energy sources etc. to be applied during repair and maintenance work. No longer is there any risk of accidentally re-energising equipment and plant, or a sudden and premature release of substances and the consequent danger to the workers. See p 94 for more information

