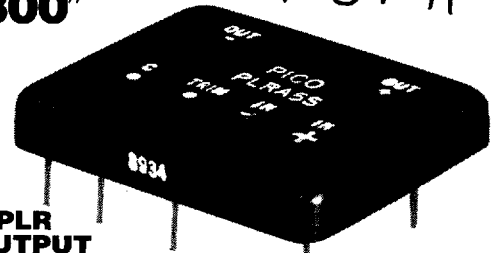


SERIES PLR- Lowest Profile Series 0.300"

**Isolated Regulated up to 5 Watt
DC-DC Converters
Wide Input Range/up to 3.33:1
Fully Regulated
All Units Shielded**



**New 100 VDC
Output Models**

SERIES PLR SINGLE OUTPUT

FEATURES:

- Voltage regulation over input of

LOW	HI
PLRE 5V 15V	
PLRF 8V 24V	
PLRA 18V 36V	
PLRB 36V 60V	
PLRC 18V 60V	
- .300" Height
- Encapsulated semiconductors, conservatively rated for maximum reliability.
- Load regulation (see table for typical variation at different loads)
- Line regulation = Typical values
 - 5-15 V DC = ± 1.5%
 - 8-24 V DC = ± 1.5%
 - 18-36 V DC = ± 1.0%
 - 36-60 V DC = ± 1.0%
 - 18-60 V DC = ± 1.5%
- High efficiency—up to 80%
- Will operate over a temperature range of -25°C to +70°C with no heat sink or electrical derating
- 6 sided shielding
- Isolation—100 megohms at 500 volts DC
- External output trimming pin standard, +5%
- Single and dual isolated outputs
- Each unit is supplied with an external control pin. This "C" pin, when connected to the negative (-) input, will disable the unit, allowing for remote shutdown.

PICO PART NUMBER	INPUT VOLTAGE RANGE	OUTPUT VOLTAGE DC	MAX. LOAD CURRENT mA	MAX. OUTPUT POWER (watts)	EFF. @ FULL LOAD TYPICAL (%)*	INPUT CURRENT FULL LOAD TYPICAL (mA)*	OUT VOLT RIPPLE @ FULL LD. 1-1 MHz BW mw p-p	OUT VOLT TOLERANCE (±)%*	VLD. REG. 25%-100% LOAD ‡ (±)%*	LINE REGULATION (±)%*	PRICE 1-24
PLRE5S	5-15	5	600	3	78	385	175	0.75	1.75	2.00	176.55
PLRE9S	5-15	9	444	4	78	515	125	0.50	1.50	1.50	176.55
PLRE12S	5-15	12	333	4	79	505	125	0.50	1.25	1.25	176.55
PLRE15S	5-15	15	267	4	79	505	125	0.50	1.25	1.25	176.55
PLRE24S	5-15	24	167	4	80	500	125	0.50	1.00	1.25	176.55
PLRE28S	5-15	28	143	4	80	500	125	0.50	1.00	1.00	176.55
PLRE48S	5-15	48	83	4	80	500	300	0.50	1.00	1.00	176.55
PLRE100S	5-15	100	40	4	80	500	300	0.50	1.0	1.0	220.69
PLRF5S	8-24	5	1000	5	78	400	150	0.75	1.75	2.00	176.55
PLRF9S	8-24	9	556	5	78	400	125	0.50	1.50	1.50	176.55
PLRF12S	8-24	12	417	5	79	395	125	0.50	1.25	1.25	176.55
PLRF15S	8-24	15	333	5	79	395	125	0.50	1.25	1.25	176.55
PLRF24S	8-24	24	208	5	80	390	125	0.50	1.00	1.25	176.55
PLRF28S	8-24	28	179	5	80	390	125	0.50	1.00	1.00	176.55
PLRF48S	8-24	48	104	5	80	390	250	0.50	1.00	1.00	176.55
PLRF100S	8-24	100	50	5	80	390	300	0.50	1.0	1.0	220.69
PLRA5S	18-36	5	1000	5	76	245	100	0.75	2.00	1.00	176.55
PLRA9S	18-36	9	556	5	76	245	100	0.50	2.00	0.50	176.55
PLRA12S	18-36	12	417	5	77	240	100	0.50	2.00	0.50	176.55
PLRA15S	18-36	15	333	5	79	235	100	0.50	1.50	0.50	176.55
PLRA24S	18-36	24	208	5	80	230	100	0.50	1.50	0.50	176.55
PLRA28S	18-36	28	179	5	80	230	100	0.50	1.50	0.50	176.55
PLRA48S	18-36	48	104	5	80	230	250	0.50	1.00	0.50	176.55
PLRA100S	18-36	100	50	5	80	230	300	0.50	1.0	1.0	220.69
PLRB5S	36-60	5	1000	5	74	140	100	0.75	1.75	0.50	208.65
PLRB9S	36-60	9	556	5	74	140	100	0.50	1.50	0.50	208.65
PLRB12S	36-60	12	417	5	74	140	100	0.50	1.00	0.25	208.65
PLRB15S	36-60	15	333	5	76	135	100	0.50	1.00	0.25	208.65
PLRB24S	36-60	24	208	5	76	135	100	0.50	0.75	0.25	208.65
PLRB28S	36-60	28	179	5	76	135	100	0.50	0.75	0.25	208.65
PLRB48S	36-60	48	104	5	76	135	200	0.50	0.75	0.25	208.65
PLRB100S	36-60	100	50	5	76	135	300	0.50	1.0	1.0	260.81
PLRC5S	18-60	5	1000	5	75	170	100	0.75	2.00	1.50	224.70
PLRC9S	18-60	9	556	5	75	170	100	0.50	1.50	1.00	224.70
PLRC12S	18-60	12	417	5	75	170	100	0.50	1.00	0.75	224.70
PLRC15S	18-60	15	333	5	77	165	100	0.50	1.00	0.75	224.70
PLRC24S	18-60	24	208	5	78	165	100	0.50	0.75	0.75	224.70
PLRC28S	18-60	28	179	5	78	165	100	0.50	0.75	0.75	224.70
PLRC48S	18-60	48	104	5	78	165	225	0.50	0.75	0.75	224.70
PLRC100S	18-60	100	50	5	78	165	300	0.50	1.0	1.0	280.88

- OPTIONS AVAILABLE**
- Expanded operating temp (-55°C to +85°C)
 - Stabilization Bake (125°C ambient)
 - Temperature Cycle (-55°C to +125°C)
 - Hi Temp, full power burn in (100% power, 125°C case temp)

**Low Profile
0.3" Height**

*Measurements taken with input voltage set at mid value.
Ordering Instructions: No minimum. Net 30 days F.O.B. Mt. Vernon, New York.

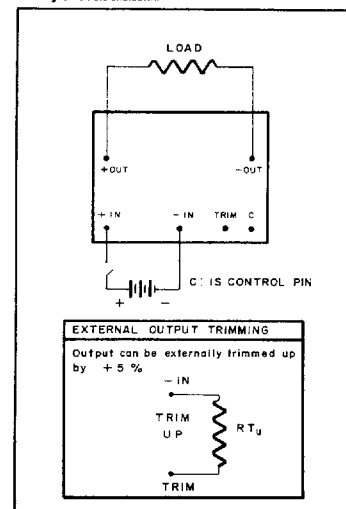
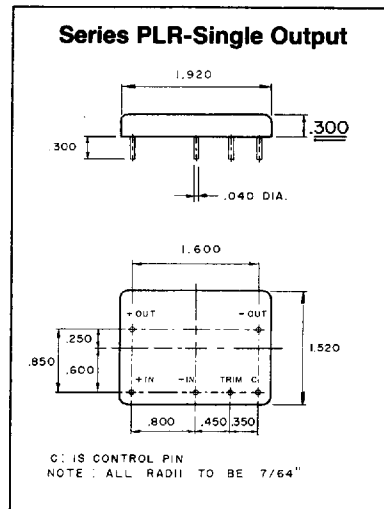
‡ 10% minimum load required.
Each unit is supplied with an external control pin. This "C" pin, when connected to the negative (-) input, will disable the unit, allowing for remote shutdown.

For immediate engineering assistance or to place an order—
Call Toll Free 800-431-1064

PICO Electronics, Inc.

453 North MacQuesten Pkwy.,
Mt. Vernon, New York 10552
914-699-5514 • FAX 914-699-5565

**Delivery—
stock to one week**



Typical Weight: 40 Grams

T-57-11

This series of Low Profile 0.300, high efficiency, wide input range, encapsulated regulators come in 75 different models. These units feature a 500 VOLT DC input to output isolation in both single and dual output models. The PLR Series will operate over a temperature range of -25°C TO +70°C with no heat sink or electrical derating. These units are excellent for applications where input voltage varies dramatically, yet a high efficiency and output voltage regulation must be maintained.

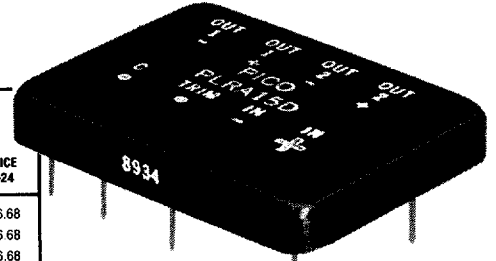
TYPICAL CHARACTERISTICS:

- Test conditions: 25°C ambient
- Operating temperature: -25°C to +70°C ambient
- Output voltage tolerance: ±1% at typical input voltage
- Output voltage temperature coefficient: 0.02%/°C
- Storage temperature: -55°C to +125°C
- Short circuit protection: Temporary
- Operating frequency: 40 Khtz, typ.

Lowest Profile Series 0.300"

SERIES PLR - DUAL OUTPUT

PICO PART NUMBER	INPUT VOLTAGE RANGE	OUTPUT VOLTAGE DC PER OUTPUT	MAX. LOAD CURRENT (mA) PER OUTPUT	MAX. OUTPUT POWER (watts) PER OUTPUT	EFF. @ FULL LOAD TYPICAL (%)*	INPUT CURRENT FULL LOAD TYPICAL (mA)*	OUT VOLT RIPPLE @ FULL LD. 1-1 MHz BW mv p-p	OUT VOLT TOLERANCE (±%)*	VLD. REG. 25%-100% LOAD ‡ (±%)*	LINE REGULATION (±%)*	PRICE 1-24
PLRE5D	5-15	5	300	1.5	78	385	175	0.75	1.75	2.00	216.68
PLRE9D	5-15	9	222	2.0	78	515	125	0.50	1.50	1.50	216.68
PLRE12D	5-15	12	167	2.0	79	505	125	0.50	1.25	1.25	216.68
PLRE15D	5-15	15	134	2.0	79	505	125	0.50	1.25	1.25	216.68
PLRE24D	5-15	24	84	2.0	80	500	125	0.50	1.00	1.25	216.68
PLRE28D	5-15	28	72	2.0	80	500	125	0.50	1.00	1.00	216.68
PLRE48D	5-15	48	42	2.0	80	500	300	0.50	1.00	1.00	216.68
PLRF5D	8-24	5	500	2.5	78	400	100	0.75	1.75	2.00	216.68
PLRF9D	8-24	9	278	2.5	78	400	125	0.50	1.50	1.50	216.68
PLRF12D	8-24	12	208	2.5	79	395	125	0.50	1.25	1.25	216.68
PLRF15D	8-24	15	167	2.5	79	395	125	0.50	1.25	1.25	216.68
PLRF24D	8-24	24	104	2.5	80	390	125	0.50	1.00	1.25	216.68
PLRF28D	8-24	28	89	2.5	80	390	125	0.50	1.00	1.00	216.68
PLRF48D	8-24	48	52	2.5	80	390	250	0.50	1.00	1.00	216.68
PLRA5D	18-36	5	500	2.5	76	245	100	0.75	2.00	1.00	216.68
PLRA9D	18-36	9	278	2.5	76	245	100	0.50	2.00	0.50	216.68
PLRA12D	18-36	12	208	2.5	77	240	100	0.50	2.00	0.50	216.68
PLRA15D	18-36	15	167	2.5	79	235	100	0.50	1.50	0.50	216.68
PLRA24D	18-36	24	104	2.5	80	230	100	0.50	1.50	0.50	216.68
PLRA28D	18-36	28	89	2.5	80	230	100	0.50	1.50	0.50	216.68
PLRA48D	18-36	48	52	2.5	80	230	250	0.50	1.00	0.50	216.68
PLRB5D	36-60	5	500	2.5	74	140	100	0.75	1.75	0.50	248.78
PLRB9D	36-60	9	278	2.5	74	140	100	0.50	1.50	0.50	248.78
PLRB12D	36-60	12	208	2.5	74	140	100	0.50	1.00	0.25	248.78
PLRB15D	36-60	15	167	2.5	76	135	100	0.50	1.00	0.25	248.78
PLRB24D	36-60	24	104	2.5	76	135	100	0.50	0.75	0.25	248.78
PLRB28D	36-60	28	89	2.5	76	135	100	0.50	0.75	0.25	248.78
PLRB48D	36-60	48	52	2.5	76	135	200	0.50	0.75	0.25	248.78
PLRC5D	18-60	5	500	2.5	75	170	100	0.75	2.00	1.50	264.83
PLRC9D	18-60	9	278	2.5	75	170	100	0.50	1.50	1.00	264.83
PLRC12D	18-60	12	208	2.5	75	170	100	0.50	1.00	0.75	264.83
PLRC15D	18-60	15	167	2.5	77	165	100	0.50	1.00	0.75	264.83
PLRC24D	18-60	24	104	2.5	78	165	100	0.50	0.75	0.75	264.83
PLRC28D	18-60	28	89	2.5	78	165	100	0.50	0.75	0.75	264.83
PLRC48D	18-60	48	52	2.5	78	165	225	0.50	0.75	0.75	264.83



No Heat Sink or Electrical Derating Required

- OPTIONS AVAILABLE**
- Expanded operating temp. (-55°C to +85°C)
 - Stabilization Bake (125°C ambient)
 - Temperature Cycle (-55°C to +125°C)
 - Hi Temp, full power burn in (100% power, 125°C case temp)

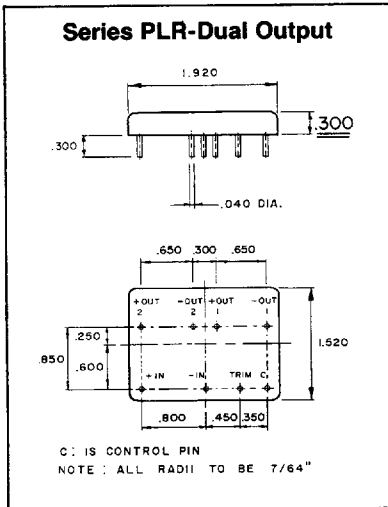
Low Profile 0.3" Height

*Measurements taken with input voltage set at mid value.

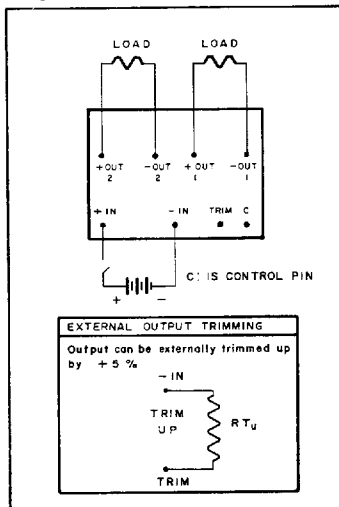
‡ 10% minimum load required.

Ordering Instructions:
No minimum. Net 30 days F.O.B. Mt. Vernon, New York.

Each unit is supplied with an external control pin. This "C" pin, when connected to the negative (-) input, will disable the unit, allowing for remote shutdown.



Typical Weight: 40 Grams



For immediate engineering assistance or to place an order—

Call Toll Free 800-431-1064

PICO Electronics, Inc.

453 N. MacQuesten Pkwy.
Mt. Vernon, N.Y. 10552

914-699-5514 • FAX 914-699-5565

Delivery—stock to one week