

Features

- Frequency Range: 10~200MHz
- Low Noise :1.2dB(Typical)
- 18dBm Typical 1dB Compression
- Standard Hermetic Package
- Operating Temperature Range:-55°C~+85°C

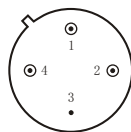
Specifications (50 Ω, V_{CC} = +15V, T_A = -55°C ~ +85°C)

| Parameter | Symbol | Unit | Guaranteed | Typical |
|--------------------------------|--------------------------------|------|------------|---------|
| Frequency Range | f _L ~f _H | MHz | 20~200 | 10~200 |
| Gain | G _p | dB | ≥10.0 | -- |
| Gain Flatness | ΔG _p | dB | ≤±0.5 Δ | ±0.3 |
| Noise Figure | F _n | dB | ≤1.5 Δ | 1.2 |
| Input VSWR | VSWR _i | -- | ≤2.0:1 Δ | 1.8:1 |
| Output VSWR | VSWR _o | -- | ≤2.0:1 Δ | 1.8:1 |
| Output Power @ 1dB Compression | P ₋₁ | dBm | ≥15.0 Δ | -- |
| | | | ≥17.0 * | -- |
| DC Current | I _{cc} | mA | -- | 15 |

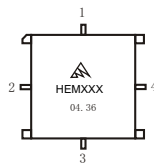
- 1) “*”f = 100MHz; “Δ” T_A = 24 ± 1°C ;
- 2) The G_p and P-1 will be reduced 0.1dB and 2.5dB respectively under operating at 12VDC (I_{cc} = 10mA Typ)

Maximum Rating

DC Voltage : +17VDC
RF Input: +13dBm
Storage Temp: +125°C



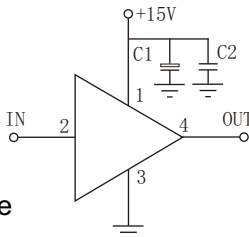
T0-8C



SMO-8C

Application Notes

1. Typical application shown as right, C₁ = 3.3~22 μF ; C₂ = 3300~6800pF ;
2. See assembly section for mounting information
3. Connectorized package(SMA-1) available



Typical Curves

