

C&K RBP12 Series 1-6 Pole Miniature Rotary Switches



Features/Benefits

- Rotary switch for low current
- Shaft perpendicular to PCB
- Index mechanism included in thickness of switch
- Several actuation modes
- Low profile

Typical Applications

- Medical
- Instrumentation
- Appliances

Mechanical Data

Max. number of banks	1
Operating torque	2.5 Ncm ± 25% (1 pole)
Stop strength	> 40 Ncm
End stop	With/without or mobile
Contact material	Silver, Gold
Insulating material	Thermoplastic

NOTE: For the latest information regarding RoHS compliance, please go to: www.ittcannon.com/rohs.

NOTE: Specifications and materials listed above are for switches with standard options. For information on specific and custom switches, consult Customer Service Center.

Electrical Data

	Silver (S)	Gold (G)
Switching mode	MBB-BBM Make Before Break, Break Before Make	MBB-BBM
Max. switching power	5 VA (resistive)	0.5 VA (resistive)
Max. switching current	130 mA	20 mA
Max. carrying current	3 A	3 A
Contact resistance	< 15 m ohms	< 25 m ohms
Dielectric strength	between contacts	1000 V
	or contacts and ground	1000 V
Nominal voltage	150 V rms	150 V rms
Number of operations	15,000	20,000
Insulation resistance between contacts and contacts and frame (500 Vcc)	> 5 x 10 ⁹ ohms	> 5 x 10 ⁹ ohms

Environmental data

	- 25°C to + 70°C	- 25°C to + 85°C
Storage temperature		
Salt spray	NA	48 H

Further data

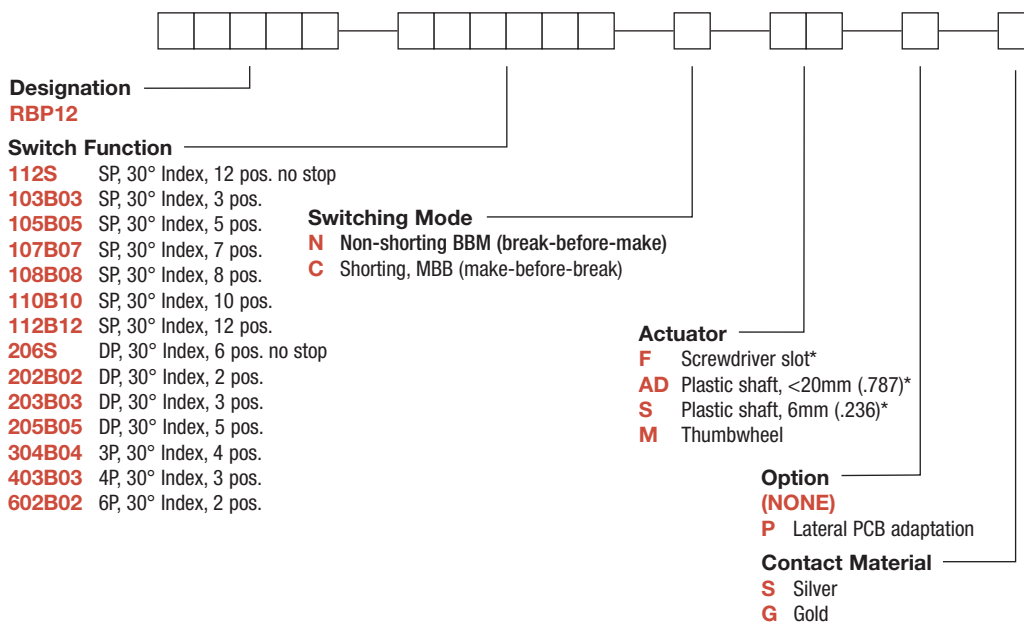
	Hand:	Wave:
Solderability	350°C/5 s	260°C/5 s max.
Cleaning	Cleaning of modules prohibited	



Rotary

Build-A-Switch

To order, simply select desired option from each category and place in the appropriate box. Available options are shown and described on pages L-19 thru L-21. For additional options not shown in catalog, consult Customer Service Center.



*Option: Metallic shaft available by request

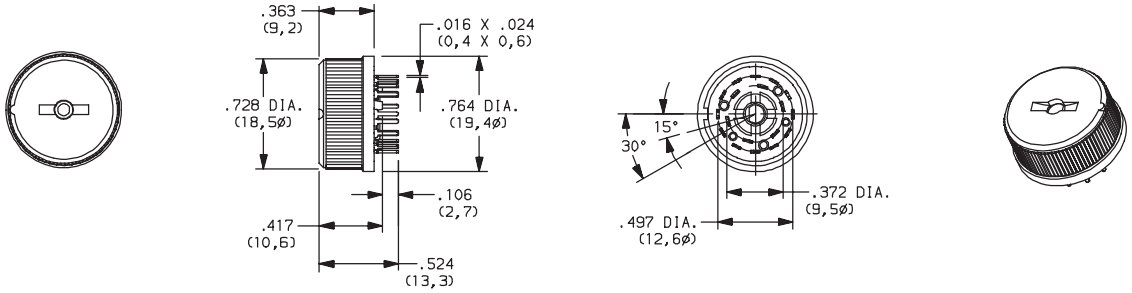


Dimensions are shown: Inch (mm)
Specifications and dimensions subject to change

C&K RBP12 Series 1-6 Pole Miniature Rotary Switches

DESIGNATION

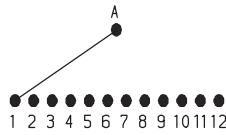
RBP12



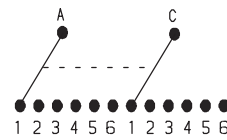
SWITCH FUNCTION

30° INDEXING		
NO. POLES	MODEL NO.	SWITCH FUNCTION
SP	112S	12 Position No Stops
	103B03	3 Positions
	105B05	5 Positions
	107B07	7 Positions
	108B08	8 Positions
	110B10	10 Positions
DP	206S	6 Positions No Stop
	202B02	3 Positions
	203B03	3 Positions
	205B05	5 Positions

SP MODELS SCHEMATIC

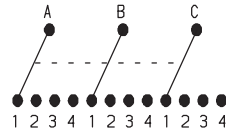


DP MODELS SCHEMATIC

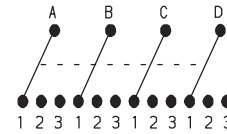


30° INDEXING		
NO. POLES	MODEL NO.	SWITCH FUNCTION
3P	304B04	4 Positions
4P	403B03	3 Positions
6P	602B02	2 Positions

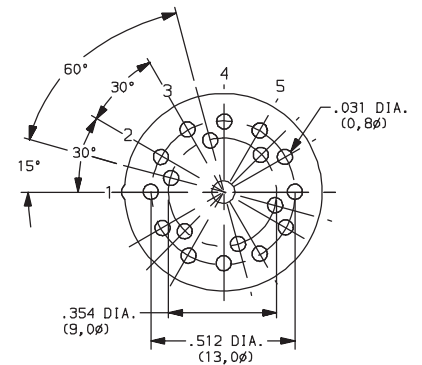
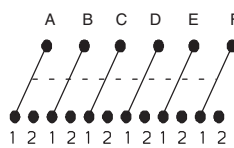
3P MODELS SCHEMATIC



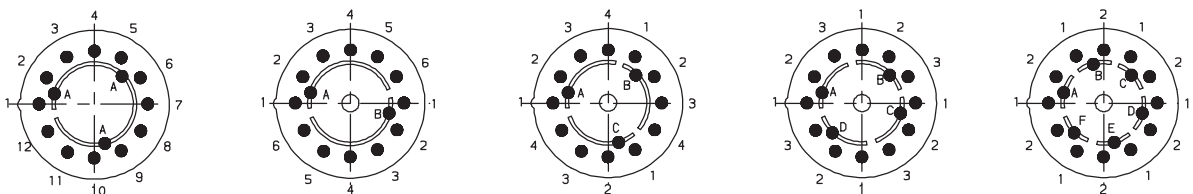
4P MODELS SCHEMATIC



6P MODELS SCHEMATIC



PC LAYOUTS



Dimensions are shown: Inch (mm)
Specifications and dimensions subject to change

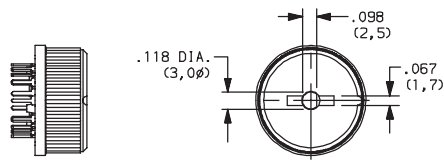
C&K RBP12 Series 1-6 Pole Miniature Rotary Switches

SWITCHING MODE 

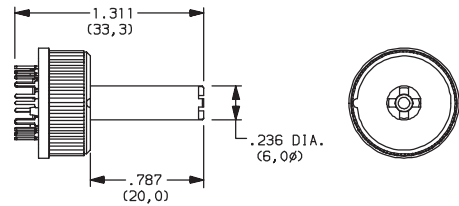
- N** NON-SHORTING, BBM (break-before-make)
- C** SHORTING, MBB (make-before-break)

ACTUATOR 

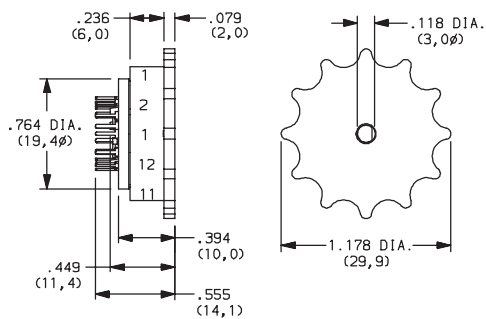
F SCREWDRIVER SLOT



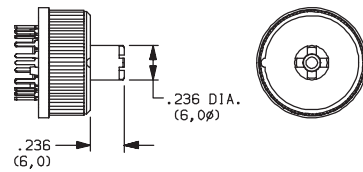
AD PLASTIC SHAFT, <20 mm (.787)



M THUMBWHEEL



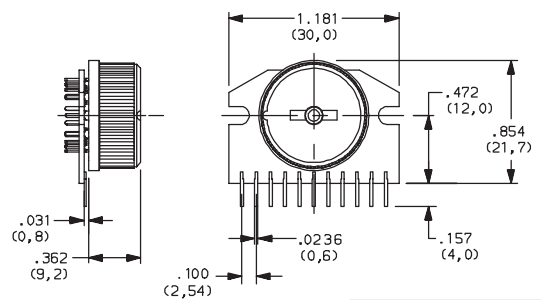
S PLASTIC SHAFT, 6 mm (.236)



OPTION 

(NONE)

P LATERAL PCB ADAPTATION



 Third Angle Projection

Dimensions are shown: Inch (mm)
Specifications and dimensions subject to change



C&K RBP12 Series 1-6 Pole Miniature Rotary Switches

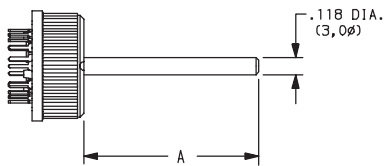
CONTACT MATERIAL

OPTION CODE	RoHS COMPLIANT*	RoHS COMPATIBLE*	CONTACT AND TERMINAL MATERIAL	RATING	
S	YES	YES	SILVER	LOW LEVEL/DRY CIRCUIT	SWITCH: 130 mA, POWER: 5 VA MAXIMUM. CARRY: 3 AMPS
G	YES	YES	GOLD	LOW LEVEL/DRY CIRCUIT OR POWER	SWITCH: 20 mA, POWER: 0.5 VA MAXIMUM. CARRY: 3 AMPS

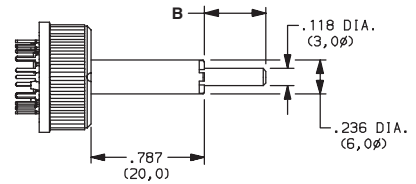
* Note: See Technical Data section of this catalog for RoHS compliant and compatible definition and specifications.

AVAILABLE HARDWARE

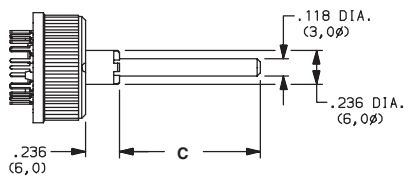
F + FA SHAFT



AD + FA SHAFT



S + FA SHAFT



PART NUMBER	"A"
Y460P0067FP	.394 (10,0)
Y460P0060FP	.590 (15,0)
Y460P0090FP	.787 (20,0)
Y460320100P	.984 (25,0)
Y460P0018FP	1.969 (50,0)
Y460P0022FP	2.756 (70,0)

NOTE: FA metallic shaft, consult customer service for available lengths.



*Dimensions are shown: Inch (mm)
Specifications and dimensions subject to change*