



# TAI-SAW TECHNOLOGY CO., LTD.

No. 3, Industrial 2nd Rd., Ping-Chen Industrial District,  
Taoyuan, 324, Taiwan, R.O.C.

TEL: 886-3-4690038 FAX: 886-3-4697532

E-mail: [tstsales@mail.taisaw.com](mailto:tstsales@mail.taisaw.com) Web: [www.taisaw.com](http://www.taisaw.com)

## Approval Sheet For Product Specification

Issued Date: 06/29/05

Product Name: SAW Filter 350 MHz SMD 3.0x3.0 mm

TST Parts No.:TB0297A

Customer Parts No.:\_\_\_\_\_

Company: _____
Division: _____
Approved by : _____
Date: _____

Checked by: \_\_\_\_\_ Asin Lin

Approval by: \_\_\_\_\_ Francis Chen

Date: \_\_\_\_\_ 06/29/05



# TAI-SAW TECHNOLOGY CO., LTD.

No. 3, Industrial 2nd Rd., Ping-Chen Industrial District,  
Taoyuan, 324, Taiwan, R.O.C.

TEL: 886-3-4690038 FAX: 886-3-4697532

E-mail: [tstsales@mail.taisaw.com](mailto:tstsales@mail.taisaw.com) Web: [www.taisaw.com](http://www.taisaw.com)

## SAW Filter 350Hz

MODEL NO.: TB0297A

REV. NO.:1

### A. MAXIMUM RATING:

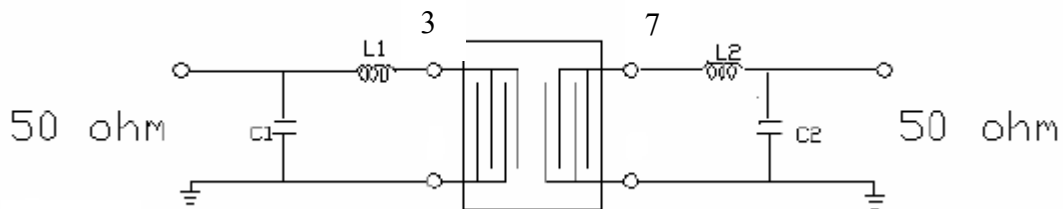
1. Input Power Level : 0 dBm
2. Operating Temperature: -40°C to 85°C
3. Storage Temperature: -40°C to 85°C

RoHS Compliant  
Lead free  
Lead-free soldering

### B. ELECTRICAL CHARACTERISTICS:

Item	Unit	Min.	Type.	Max.	Note
Center frequency, <b>F<sub>c</sub></b>	MHz	-	350	-	-
Insertion Loss, <b>IL</b>	dB	-	9.0	10	-
Passband width, <b>BW<sub>3</sub></b>	MHz	4.5	7.3	-	-
Amplitude Ripple in F <sub>c</sub> ±1MHz	dB	-	0.5	1	-
Group delay ripple in F <sub>c</sub> ±1MHz	nS	-	70	100	-
Phase Linearity in F <sub>c</sub> ±1MHz	deg		1.0	4	
Attenuation:(Reference level from Min IL)					
10 MHz to 320 MHz	dB	35	38	-	-
320 MHz to 337 MHz	dB	30	33	-	-
363 MHz to 380 MHz	dB	30	33	-	-
380 MHz to 500 MHz	dB	35	39	-	-

### C. MEASUREMENT CIRCUIT:



Input L1=22nH, C1=12pF  
Output L2=27nH, C2=18pF

### D. Frequency Characteristics :

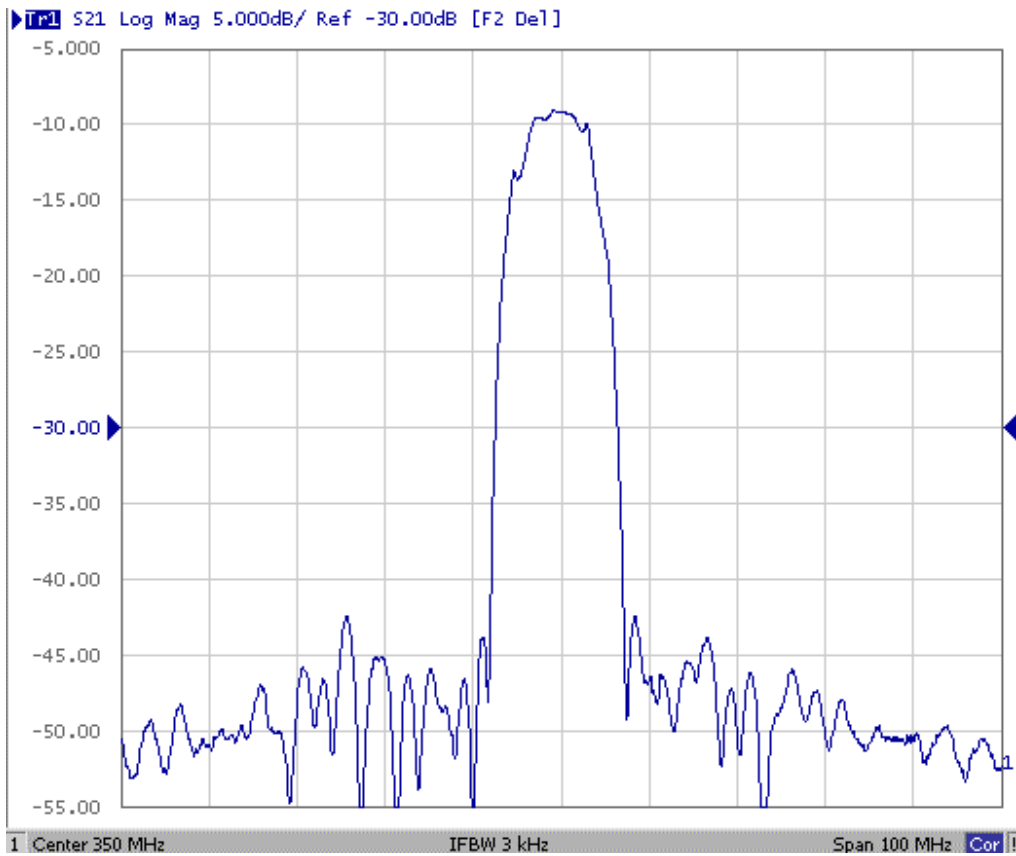


Fig-1 S21 Response Horizontal: 10MHz/Div  
Vertical: 5B/Div

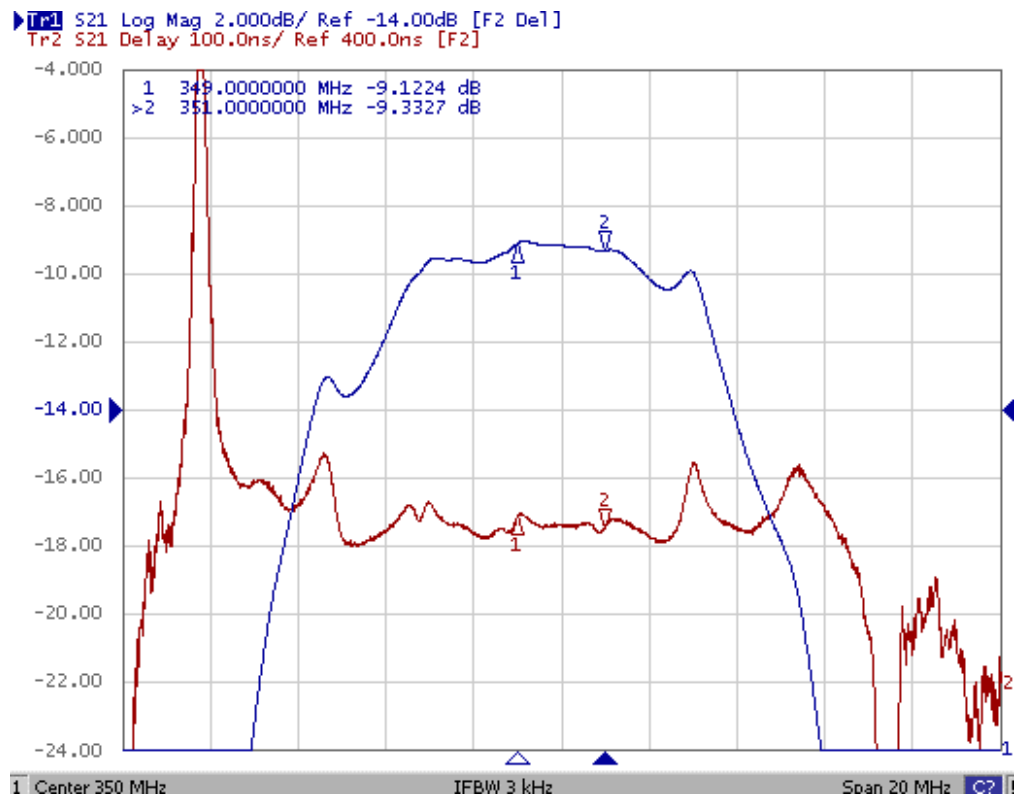
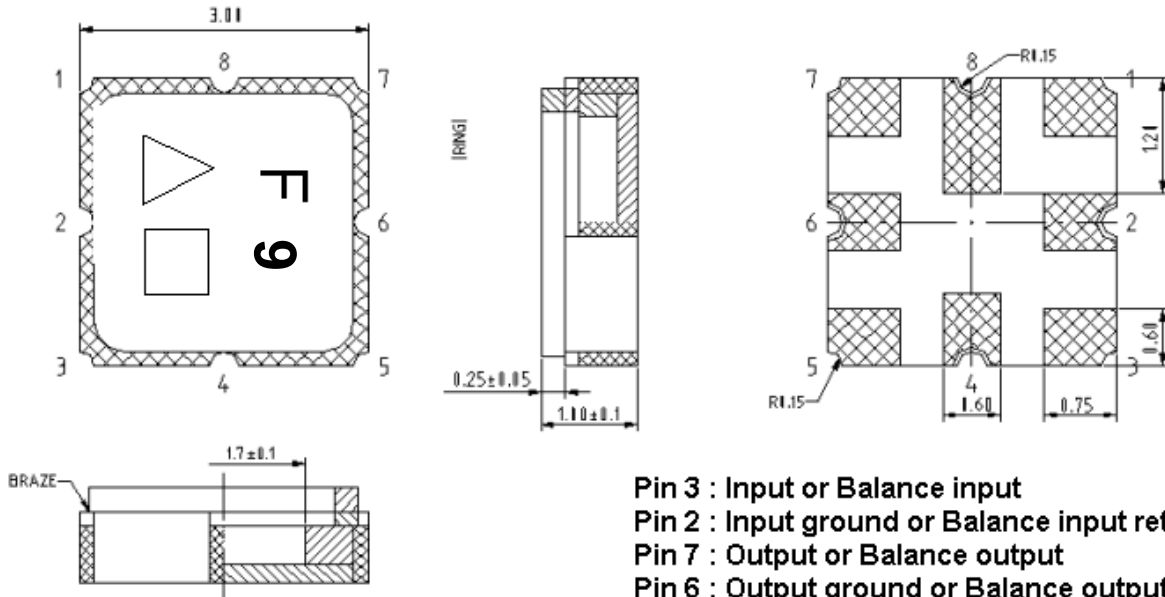


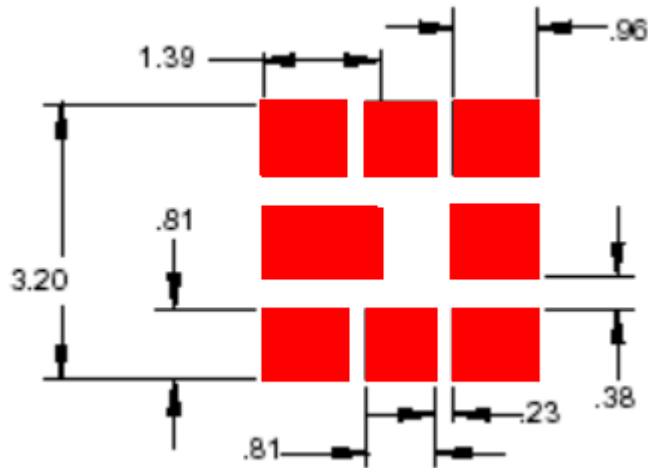
Fig-2 Horizontal: 2M Hz/Div Vertical: 2dB/Div  
Vertical: 100Div

**E. Outline Drawing :**



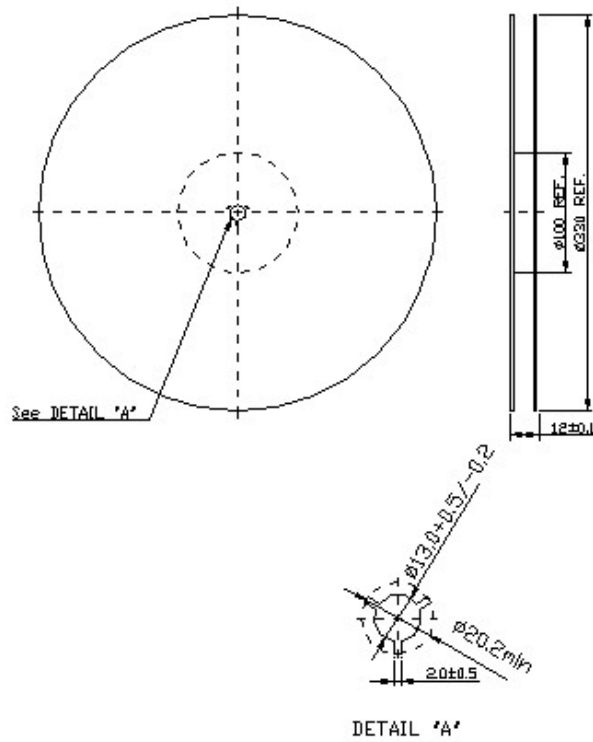
- Pin 3 : Input or Balance input
- Pin 2 : Input ground or Balance input return
- Pin 7 : Output or Balance output
- Pin 6 : Output ground or Balance output return
- Pin 1,4,5,8 : To be ground
- △ : Year code
- : Date code
- Unit : mm

**F. PCB Footprint**



**G. Packing:**

**1. REEL DIMENSION**



**2. TAPE DIMENSION**

