

## FEATURES AND SPECIFICATIONS

# molex® HDM\* Stiffener Removal/ Installation Repair Tool

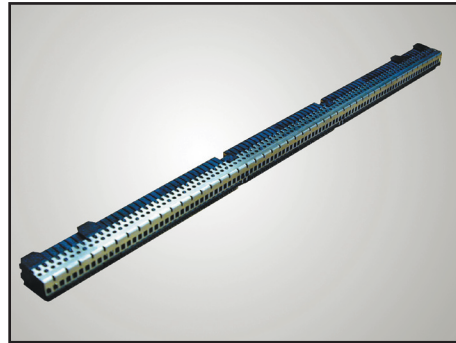
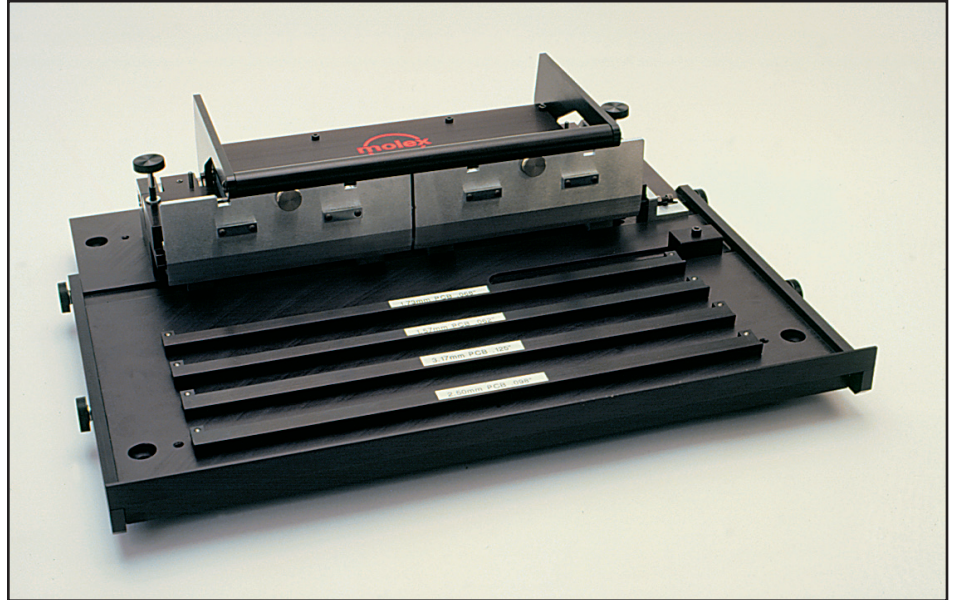
The Molex Stiffener Removal/Installation Repair Tool is designed to remove or replace the stiffener rail from a connector assembly terminated to a PCB. The rail is removed from a PCB so that a Molex HDM 73670 series connector can be repaired or replaced on the PCB.

### Features and Benefits

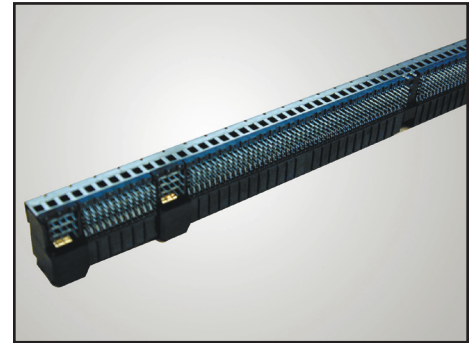
- The Stiffener Repair Tool will remove and replace a stiffener rail on a PCB, which requires an operator to obtain and use one tool, plus reduces their overall cost and learning curve.
- Accommodates printed circuit boards up to 457.00mm (18.00" x 18.00") allowing for a wide range of repair capability.
- Can remove and replace rails up to 406.40mm (16.00") long, providing repair flexibility.
- All operations are manual and require no air or electric feeds. This provides energy savings and requires no machine installation, which lowers costs.
- Lightweight design, which provides for easy storage and relocation.

### Mechanical

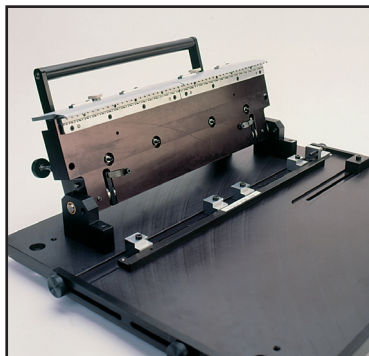
Dimensions: Height—254.00mm (10.00") fully open  
Width—584.00mm (23.00")  
Depth—445.00mm (17.50") base plate  
635.00mm (25.00") with support rail fully extended  
Unpacked Weight: 21.30 kg (47 lbs.)



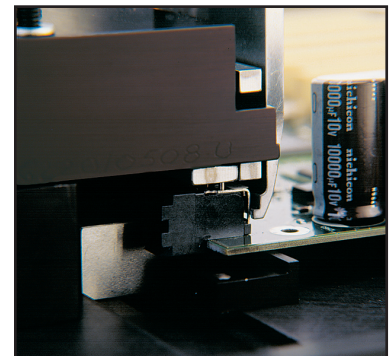
73670



73670



Tool Open



Tool In Use

## ORDERING INFORMATION

Order Number	Description	For Use With
62201-5600	HDM Stiffener Repair Tool	73670

HDM is a registered trademark of Teradyne, Inc.

**Americas Headquarters**  
Lisle, Illinois 60532 U.S.A.  
1-800-78MOLEX  
amerinfo@molex.com

**Far East North Headquarters**  
Yamato, Kanagawa, Japan  
81-462-65-2324  
fesinfo@molex.com

**Far East South Headquarters**  
Jurong, Singapore  
65-6-268-6868  
fesinfo@molex.com

**European Headquarters**  
Munich, Germany  
49-89-413092-0  
eurinfo@molex.com

**Corporate Headquarters**  
2222 Wellington Ct.  
Lisle, IL 60532 U.S.A.  
630-969-4550  
Fax: 630-969-1352

Visit our website at [www.molex.com](http://www.molex.com)