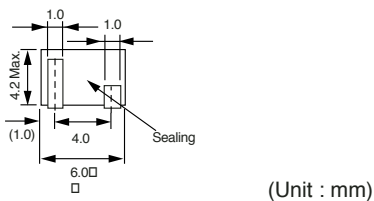
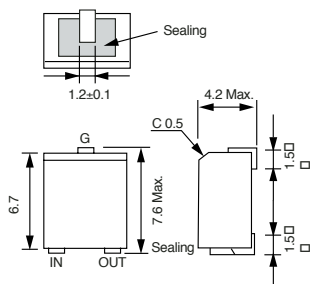
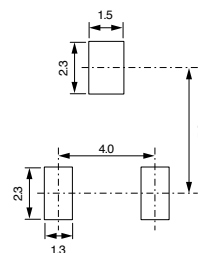


### TYPE ELFC



### Standard pattern dimensions

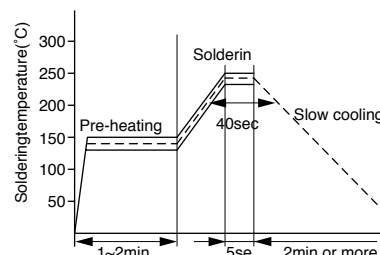
標準パターン寸法図



(Unit : mm)

### Standard reflow soldering conditions

標準リフロソルダ条件



### Description

- Ceramic ladder Filters for 455kHz band surface mounting.
- May be used in combination with Ceramic Discriminator to eliminate need for adjustment.

### Features

- Bandwidth characteristics can be set to meet requirements, i.e. from ±3kHz to ±10kHz.
- Possibility of use in IF stages ladder filters which require no adjustments.

### Applications

- Wireless communications equipment, Transceivers, and Equipment for Personal computer.
- Wireless data communications equipment (Remote Engine starter, Handheld companions).

### 概要

- 455kHz帯面実装4素子セラミックラダーフィルタ
- セラミックディスクリミネータとの組み合わせでIF段の無調整が可能

### 特長

- 帯域幅が用途に応じ自由に選択可能 (±3kHz~±10kHz)
- IF段の無調整が可能

### 用途

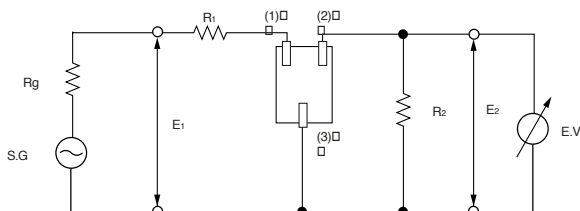
- 無線通信機、トランシーバ、PC周辺機器
- 無線応用機器 (エンジンスタター、携帯端末など)

## SELECTION GUIDE FOR STANDARD FILTERS

### TYPE ELFC

東光品番	6dB帯域幅	減衰帯域幅	保証減衰量	挿入損失	入出力インピーダンス
TOKO Part Number	6dB Band width (kHz Min.)	40dB Band width (kHz Max.)	Attenuation (dB Min.)	Insertion Loss (dB Max.)	Input/Output Impedance (Ω)
ELFC455D	±10.0	±20.0	27.0	4.0	1500
ELFC455E	± 7.5	±15.0	27.0	4.0	1500
ELFC455F	± 6.0	±12.5	27.0	4.0	1500
ELFC455G	± 4.5	±10.0	27.0	4.0	1500
ELFC455H	± 3.0	± 9.0	27.0	4.0	1500

### Test circuit 測定回路



### Test conditions

1.  $R_g + R_1 = R_2 = 1.5k\Omega$
2. Insertion loss (dB) =  $20 \cdot \log(E_1/2 \cdot E_2)$   
But  $E_1$ : S.G. open end output.

### 測定条件

1.  $R_g + R_1 = R_2 = 1.5k\Omega$
2. 挿入損失 (dB) =  $20 \cdot \log(E_1/2 \cdot E_2)$   
但し、 $E_1$ : S.G.開放端出力とする。