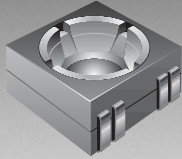


\*ROHS COMPLIANT



**BOURNS®**

## Features

- Recommended for reflow processing
- Rotor design compatible with pick and place and automatic adjustment equipment
- Supplied in 8 mm embossed tape, compatible with automatic assembly equipment
- Carbon element
- RoHS compliant\* - see [processing information](#) on lead free surface mount trimmers

# TC73 - Trimming Potentiometer

## Electrical Characteristics

Standard Resistance Range .....500 to 1 megohm  
 (see standard resistance table)  
 Resistance Tolerance .....±30 % std.  
 Absolute Minimum Resistance  
 ≤ 1K Ohms .....20 ohms max.  
 >1K Ohms .....2 % max. of TR  
 Contact Resistance Variation  
 .....5 % max.  
 Resolution.....Infinite  
 Adjustment Angle.....260 ° ±20 °(-2)

## Environmental Characteristics

Power Rating (50 VDC max.)  
 50 °C .....0.05 watt  
 Temperature Range.....-25 °C to +85 °C  
 Temperature Coefficient .....±250 ppm/°C  
 Humidity .....95 %RH  
 500 hours  
 TRS max. ....+15 % to -2 %  
 Load Life  
 .....@ 50 °C rated power 500 hours  
 TRS ±5 %  
 Rotational Cycling.....20 turns  
 TRS ±20 %

## Physical Characteristics

Torque.....10-150 g-cm max.  
 Mechanical Angle  
 .....Continuous; 260 ° ± 20 °  
 Marking.....Part marking code  
 Standard Packaging  
 .....2000 pcs./7 " reel

## Soldering Process

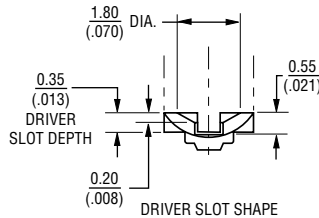
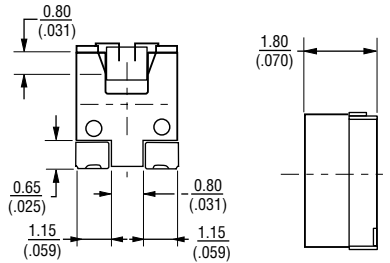
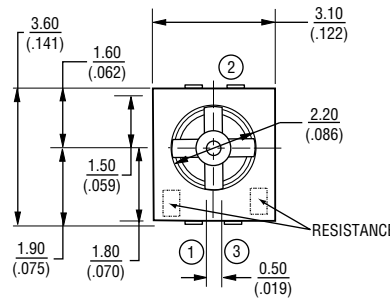
Hand Soldering ...Soldering Iron of 20 W  
 or less controlled at 280 °C for about  
 3 sec. while applying solder  
 Reflow Soldering .....Peak temperature  
 or reflow oven should be  
 set to 240 °C max.

## Standard Resistance Table

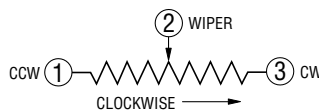
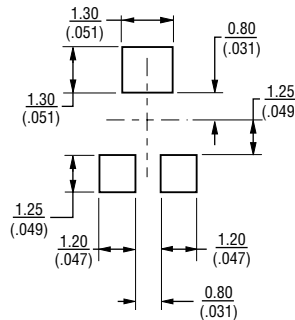
Resistance (Ohms)	Part Marking Code	Resistance Code
500	52	501
<b>1,000</b>	<b>13</b>	<b>102</b>
<b>2,000</b>	<b>23</b>	<b>202</b>
<b>5,000</b>	<b>53</b>	<b>502</b>
<b>10,000</b>	<b>14</b>	<b>103</b>
<b>20,000</b>	<b>24</b>	<b>203</b>
50,000	54	503
100,000	15	104
200,000	25	204
500,000	55	504
1,000,000	16	105

Popular distribution resistance values listed in boldface. Special resistances available.

TC73X/W-2



SUGGESTED PCB LAYOUT



## How To Order

**TC73 X - 1 - 103 E**

Model \_\_\_\_\_  
 Style \_\_\_\_\_  
 Orientation of Parts \_\_\_\_\_  
 In Tape:  
 Style X: Terminals Away From Sprocket Holes  
 Style W: Terminals in direction to sprocket holes (preferred)  
 Standard or Modified Product Indicator \_\_\_\_\_  
 1 = Mechanical rotation stop (preferred)  
 2 = Continuous  
 Resistance Code \_\_\_\_\_  
 Embossed Tape Designator \_\_\_\_\_  
 E = 2000 pcs. per reel, 8 mm tape

Consult factory for other available options.

DIMENSIONS ARE:  $\frac{\text{MM}}{\text{(INCHES)}}$

REV. 09/04

\*RoHS Directive 2002/95/EC Jan 27 2003 including Annex. Specifications are subject to change without notice. Customers should verify actual device performance in their specific applications.