

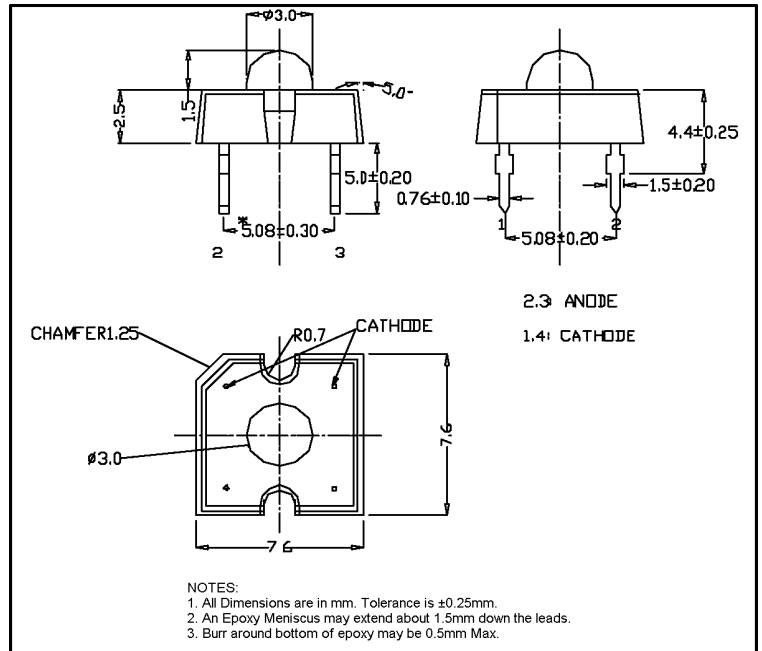
LP377THR1-70G

Features

- Low Profile
- 4 Pin Plastic Package
- Water Clear Lens
- High Flux Output
- High Current Operation

Applications

- Automotive Interior Exterior Lighting
- Rail Signals
- Traffic Control Devices
- Channel Letters
- Strip Lighting
- Architectural Lighting



Maximum Ratings ($T_a=25^\circ\text{C}$)

Characteristic	Symbol	Max.	Unit
Forward Current	I_F	70	mA
Reverse Voltage	V_R	5.00	V
Power Dissipation	P_D	150.00	mW
Operating Temperature	T_{opr}	$-40 \sim +100$	$^\circ\text{C}$
Storage Temperature	T_{stg}	$-40 \sim +100$	$^\circ\text{C}$
Soldering Temperature	T_{sol}	260	$^\circ\text{C}$
Soldering Time	-	for 5 sec. max	-

Opto-Electrical Characteristics ($T_a=25^\circ\text{C}$)

Characteristic	Symbol	Test Condition	Min	Typ	Max	Unit
Forward Voltage	V_F	$I_F=70\text{mA}$	2.20	2.60	3.00	V
Reverse Current	I_R	$V_R=5\text{V}$	-	-	100	μA
Luminous Flux	Φ	$I_F=70\text{mA}$	2200.00	4000.00	-	mlm
Viewing Angle	$2\theta^{1/2}$	-	-	70°	-	deg.
Peak Wavelength	λ_p	$I_F=70\text{mA}$	-	639	-	nm
Dominant Wavelength	λ_d	$I_F=70\text{mA}$	-	628	-	nm
Spectral Line Half Width	$\Delta\lambda$	$I_F=70\text{mA}$	-	23	-	nm

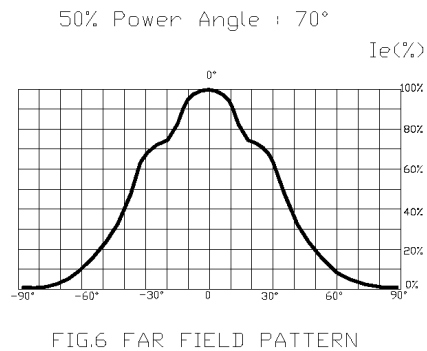
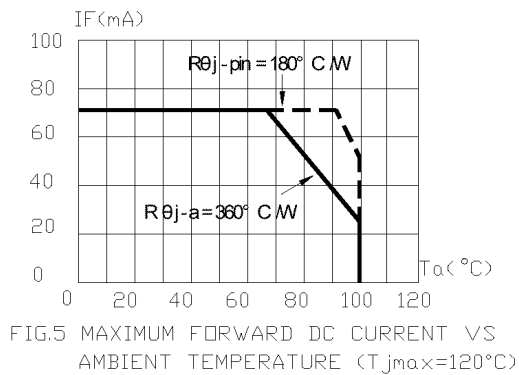
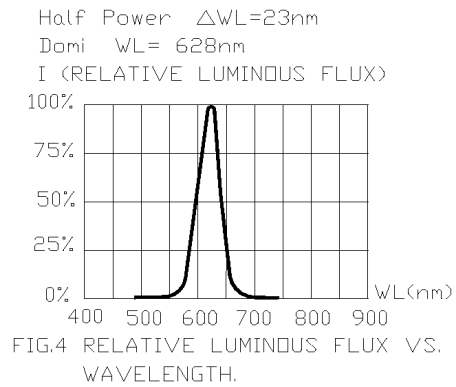
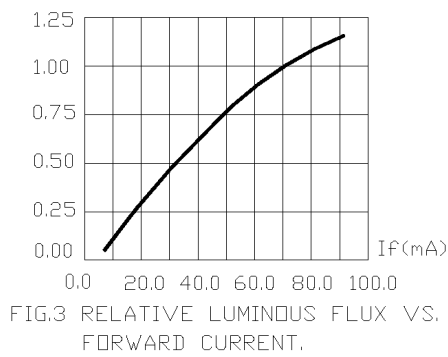
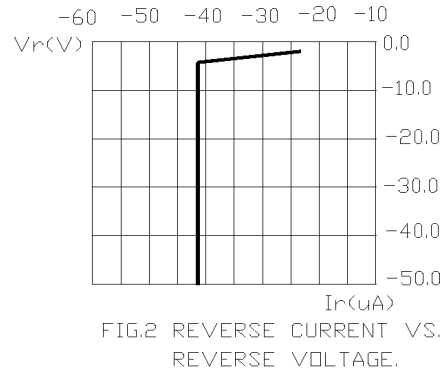
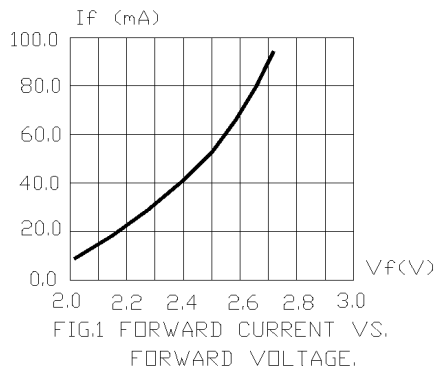
Company Headquarters
 120 Broadway
 Menands, New York 12204
 Toll Free: 800.984.5337
 Fax: 518.432.7454



Web: www.marktechopto.com | Email: info@marktechopto.com

West Coast Sales Office
 950 South Coast Drive, Suite 265
 Costa Mesa, California 92626
 Toll Free: 800.984.5337
 Fax: 714.850.9314

LP377THR1-70G Graphs



1. Cathode PAD Area (0.18 × 0.18 × 2inch²)
2. Height above nominal seating plane in inches(0.3inch)